

Beyond the Dictionary & Prefixes, Suffixes, and Root Words



This resource is designed to complement both the *Beyond the Dictionary* series and the *Prefixes, Suffixes, and Root Word* series. To make the most of these charts, be sure to download the free sample weeks available for each product.

Beyond the Dictionary
A Themed Approach to Meaningful Word Practice
Sample Week

Digital Games + Printable Practice

Word Bank
invisible light justice
resemble transport shield

Close: Just when it seemed too late, the hero managed to _____ away from the collapsing building.

It's Player 2's Turn!

Step 3: Interpret and extend
Write each sentence with either **steal** or **steep**.

- steal: what / force field _____
- steep: rain / helmet _____
- steep: train / equipment _____
- steep: sunburn / armor _____
- steep: marsh / acid device _____

Write a sentence using either **steal** or **steep**.

1. _____

2. _____

3. _____

4. _____

5. _____

6. _____

7. _____

8. _____

9. _____

10. _____

11. _____

12. _____

13. _____

14. _____

15. _____

16. _____

17. _____

18. _____

19. _____

20. _____

21. _____

22. _____

23. _____

24. _____

25. _____

26. _____

27. _____

28. _____

29. _____

30. _____

31. _____

32. _____

33. _____

34. _____

35. _____

36. _____

37. _____

38. _____

39. _____

40. _____

41. _____

42. _____

43. _____

44. _____

45. _____

46. _____

47. _____

48. _____

49. _____

50. _____

51. _____

52. _____

53. _____

54. _____

55. _____

56. _____

57. _____

58. _____

59. _____

60. _____

61. _____

62. _____

63. _____

64. _____

65. _____

66. _____

67. _____

68. _____

69. _____

70. _____

71. _____

72. _____

73. _____

74. _____

75. _____

76. _____

77. _____

78. _____

79. _____

80. _____

81. _____

82. _____

83. _____

84. _____

85. _____

86. _____

87. _____

88. _____

89. _____

90. _____

91. _____

92. _____

93. _____

94. _____

95. _____

96. _____

97. _____

98. _____

99. _____

100. _____

Gay Miller

[Beyond the Dictionary
Sample Week](#)

**Greek and Latin
Roots & Affixes**
Sample

Practice Root Word List
Complete the sentences with words from the word bank.

1. Star Wars, Star Trek, E.T., and other popular movies are based on creatures belonging to some other planet. _____

2. Earth has been contacted by _____ from _____.

3. In recent years, scientists have _____ in _____ to prove the existence of alien life. Over _____ planets in _____ have _____.

4. Making your own _____ is a fun activity. Add water about one inch to the bottom of your container before you start. Add water about one inch at a time and enjoy this piece of _____.

5. Find the mystery words by connecting the dots.

Word _____
Sentence _____

Word Bank
interment terra cotta
terrene terrace
terra incognita tureen
terra firma subterranean
terrazzo terrarium
terran

2. kind or ground, or the natural characteristics of its surface
3. a flooring that is composed of marble or other stone slabs, bound in cement and polished when dry
4. kind that is firm or dry; solid earth
5. pertaining to the earth; usually, as opposed to two-wheeled
6. a hard brownish-red ceramic; clay, used in the making of sculpture, pottery, architectural ornaments, and building components
7. the soil for mud or plaster in a grave or tomb; burial
8. a closed container for growing small plants or keeping small animals
9. a flat, paved surface outside of a house or other building; patio
10. a large, deep, wide dish, usually with a lid, used for serving soups, stews, and meats below the earth's surface; underground
11. an unexplored land or subject

Created by
Gay Miller

[Greek and Latin Roots & Affixes
Sample Week](#)

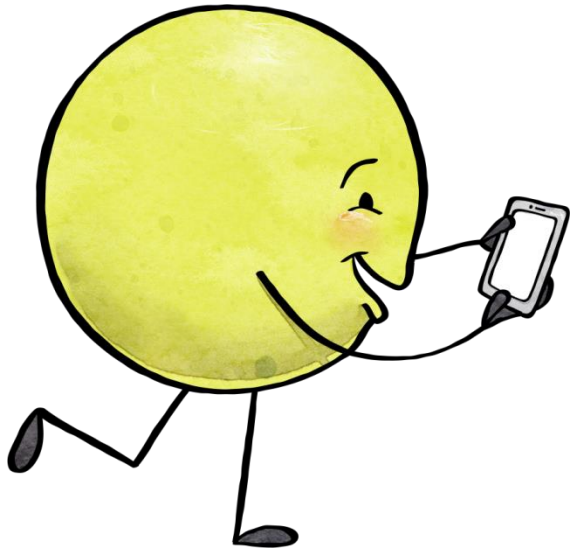
Option 1 – Rotating Between Themed Vocabulary and Affix/Root Study

This approach keeps vocabulary instruction focused and manageable by alternating between two distinct types of weekly content:

- **Themed Vocabulary Weeks:** These weeks center around recognition days, seasonal events, and holidays (e.g., Superheroes, Honey Bees, Constitution Day) and build contextual vocabulary through printable practice (which can be assigned through TPT Easel if you want to go paperless) and online JavaScript games and activities.
- **Affix/Root Study Weeks:** These weeks introduce prefixes, suffixes, and root words through short video lessons paired with organizers, practice worksheet, and games. All activities in this series are offered in both printable or Google Slide formats.

Teachers can rotate weekly between the two series, allowing students to build both contextual understanding and word-building skills over time. This structure supports long-term retention and keeps instruction fresh.

The charts on the next two pages show how this rotation might look using the sample weeks from the *Beyond the Dictionary – Superhero Theme Week* and the *Prefixes, Suffixes, and Root Words Sample Week*.



Superhero Themed Week: *Beyond the Dictionary*

Day	Skill Focus	Printable Practice	Game	Presentation Option	Teacher Notes
Monday	Word Meaning: invincible, agile	<ul style="list-style-type: none"> - Match sentence to definition (invincible) - T-chart sort for agile meanings - Odd one out - Highlight synonyms in context passage 	Jump and Sort Description Sort	small group or center	
Tuesday	Word Meaning: justice, menace	<ul style="list-style-type: none"> - Match sentence to definition (menace) - Circle synonyms of justice - Synonym/antonym match - Cloze story using all four words 	Hangman Multiple-Choice Challenge	morning work or partner task	
Wednesday	Word Meaning: teleport, shield	<ul style="list-style-type: none"> - Complete analogies - Cause/effect chart - Word web for teleport - Scenario-based power choice with explanation 	Connect Four Sentences	whole class or small group	
Thursday	Figurative Language for Heroic Traits	<ul style="list-style-type: none"> - Identify figurative language types - Match powers to descriptions - Write simile, metaphor, and imagery for chosen hero 	Concentration: Figurative Edition	independent or center	
Friday	Review + Creative Assessment	- Optional checkpoint using cloze, sort, or writing prompts from earlier days	Jeopardy: Superhero Edition	whole class or flexible groups	

Prefix, Suffix & Root Word Week Planning Chart

Day	Teach Focus Skill with Video Lesson	Printable Practice	Game	Presentation Option	Teacher Notes
Monday	Prefix: micro-	<ul style="list-style-type: none"> - Organizer with definitions, pictures, word list, and sentences - Word building chart - Sentence completion - Matching definitions 	Memory: Prefix micro-	small group or center	
Tuesday	Suffix: -acy	<ul style="list-style-type: none"> - Sentence completion using -acy words - Grammar questions on part of speech - Analogies using word list 	Dots and Boxes: Suffix -acy	morning work or partner task	
Wednesday	Root Word: mort	<ul style="list-style-type: none"> - Crossword puzzle using mort vocabulary - Definitions embedded in clues 	Aggravation: Root mort	whole class or small group	
Thursday	Root Word: terr	<ul style="list-style-type: none"> - Sentence completion using terr words - Mystery word charts with Latin roots/prefixes/suffixes 	Bump: Root terr	independent or center	
Friday	Review + Creative Assessment	<ul style="list-style-type: none"> - Optional writing, analogies, or mystery word review - Use any organizer or game from earlier days 	Teacher's choice (any from week)	whole class or flexible groups	

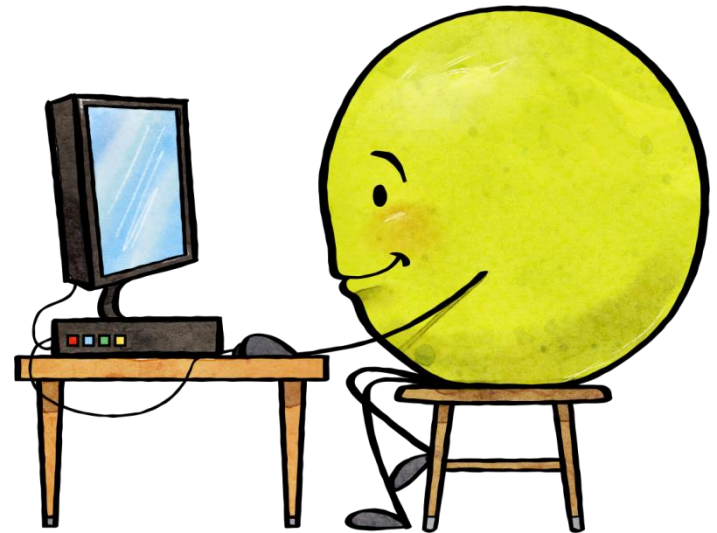
Option 2: Integrating One Affix or Root into a Themed Vocabulary Week

This approach blends the two series into a single, cohesive week. Teachers introduce one prefix, suffix, or root word on Monday, then continue with the themed vocabulary activities Tuesday through Friday. The affix/root is woven into the week's vocabulary, writing, and games for deeper application.

This model works especially well for teachers who want to:

- maximize instructional time
- reinforce word-building within meaningful contexts
- differentiate vocabulary instruction without adding prep

The sample chart on the next page shows how the prefix *un-* can be integrated into the Superhero theme. Each day includes a skill focus, printable practice, game suggestion, and teacher notes. A blank planning chart is also provided so teachers can create their own integrated weeks using any theme and affix/root combination.



Superhero Theme + Root Word mirco Integrated Weekly Plan

Day	Skill Focus	Printable Practice	Game	Presentation Option	Teacher Notes
Mon	Prefix Focus: <i>micro-</i> (small, tiny)	<ul style="list-style-type: none"> - Watch prefix video and complete organizer - Build new words using <i>micro-</i> (e.g., <i>microchip</i>, <i>microcomputer</i>) - Match <i>micro-</i> words to definitions and complete sentence prompts 	Memory: Prefix <i>micro-</i>	Whole class or small group	<p>Use Monday to launch prefix. Connect <i>micro-</i> to superhero tech (e.g., microgadgets, microdrones). Have students make up <i>micro-</i> inventions such as <i>microwings</i>, <i>microblasters</i>, even <i>micropets</i>.</p>
Tues	Word Meaning: invincible, agile	<ul style="list-style-type: none"> - Match sentence to definition (invincible) - T-chart sort for agile meanings - Odd one out - Highlight synonyms in context passage 	Jump and Sort Description Sort	small group or center	Reinforce <i>micro-</i> words like <i>micromanager</i> or <i>microcontroller</i> to show how small-scale control can affect agility or invincibility.
Wed	Word Meaning: justice, menace	<ul style="list-style-type: none"> - Match sentence to definition (menace) - Circle synonyms of justice - Synonym/antonym match - Cloze story using all four words 	Hangman Multiple-Choice Challenge	morning work or partner task	Include <i>microvillain</i> or <i>microcrime</i> as playful extensions of menace and justice themes.
Thurs	Word Meaning: teleport, shield	<ul style="list-style-type: none"> - Complete analogies - Cause/effect chart - Word web for teleport - Scenario-based power choice with explanation 	Connect Four Sentences	whole class or small group	Use <i>microsensor</i> , <i>microshield</i> , or <i>microportal</i> in scenarios to show how small tech enhances superhero powers.
Fri	Figurative Language for Heroic Traits	<ul style="list-style-type: none"> - Identify figurative language types - Match powers to descriptions - Write simile, metaphor, and imagery for chosen hero 	Concentration: Figurative Edition	independent or center	Include phrases like "a microburst of courage" or "her microshield shimmered like glass" to blend figurative language with affix vocabulary.
Optional Review	Creative Assessment	- Cloze, sort, or writing prompts from earlier days	Jeopardy: Superhero Edition	whole class or flexible groups	

Theme _____ **+** _____ **Integrated Weekly Plan**

Day	Skill Focus	Printable Practice	Game	Presentation Option	Teacher Notes
Mon					
Tues					
Wed					
Thurs					
Fri					
Optional Review					

Vocabulary Game Planner

Day	Skill Focus	Game/Activity	Group	Format	Notes
Monday					
Tuesday					
Wednesday					
Thursday					
Friday					

Suggested Pairings: Matching Affixes and Roots to Themed Vocabulary Weeks

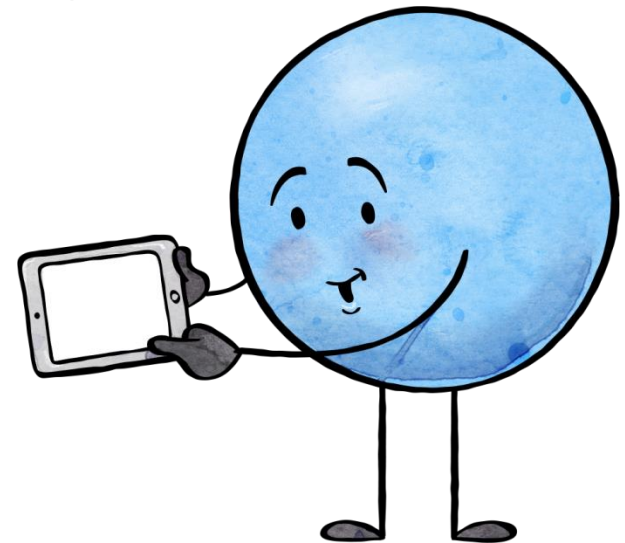
To support teachers who want to blend the two series, we've provided monthly charts that suggest one affix or root word to pair with each themed week. These pairings were chosen based on:

- natural connections between word meanings and theme content
- opportunities to reinforce vocabulary skills (e.g., synonyms, analogies, figurative language)
- flexibility for teachers to substitute based on district pacing guides

Each monthly chart includes:

- the themed week title and vocabulary focus
- a suggested affix or root word
- a brief explanation of how the pairing supports instruction

These charts are meant to inspire—not prescribe. Teachers can use them as-is, swap in required affixes/roots, or build their own combinations using the blank planning chart provided.



August + Set 1 Prefixes, Suffixes, & Root Words Integrated Vocabulary Planning Chart

Week	Theme	Affix/Root	Type	Student-Friendly Definition	Example Words	Connection to Theme
Week 1	Back-to-School	re-	prefix	to do again or go back	reorganize, review	restarting routines, reviewing skills
Week 2	Inspiring Youth	phon	root	sound or voice	megaphone, symphony	youth using voice to lead and inspire
Week 3	Honey Bee	-ly	suffix	in a certain way	busily, gently	describing bee behavior and idioms
Week 4	Kindness & Friendship	spec/spect	root	to look or observe	respect, inspect	observing others, showing empathy



September + Set 1 Prefixes, Suffixes, & Root Words Integrated Vocabulary Planning Chart

Week	Theme	Affix/Root	Type	Student-Friendly Definition	Example Words	Connection to Theme
Week 1	Wildlife & Elephants	graph/scrib/scrip	root	to write or record	graphic, scribe, script	documenting animal behavior, recording sounds and movement
Week 2	Constitution & Citizenship	-ness	suffix	a state or quality of being	fairness, kindness, civicness	abstract traits tied to citizenship and values
Week 3	Skyscraper & 9/11	non-	prefix	not or opposite of	nonfiction, nonviolent, nonessential	exploring literal vs. figurative meanings, government acronyms
Week 4	Autumnal Equinox	rupt	root	to break or burst	interrupt, erupt, disrupt	seasonal change, emotional shifts, literary oxymorons

 **October + Set 2 Prefixes, Suffixes, & Root Words Integrated Vocabulary Planning Chart**

Week	Theme	Affix/Root	Type	Student-Friendly Definition	Example Words	Connection to Theme
Week 1	World Habitat Day	aud/audi	root	to hear or listen	audience, auditory, audiobook	listening for sounds in nature, animal habitats
Week 2	Fire Prevention Week	-ion	suffix	the action or process of	ignition, extinction, combustion	fire-related processes and safety vocabulary
Week 3	National Dessert Day	-ive	suffix	tending to, doing, or being	addictive, creative, festive	describing desserts and playful word choices
Week 4	Halloween	ject	root	to throw	eject, project, reject	spooky surprises, dramatic actions, and wordplay

 **November + Set 2 Prefixes, Suffixes, & Root Words Integrated Vocabulary Planning Chart**

Week	Theme	Affix/Root	Type	Student-Friendly Definition	Example Words	Connection to Theme
Week 1	Maple Tree & Syrup	sens/sent	root	to feel	sensitive, sentiment, sensational	descriptive language, sensory imagery, personification
Week 2	Veterans Day	-or	suffix	someone who performs an action	defender, survivor, honor	roles of service, courage, and sacrifice
Week 3	Thanksgiving	pre-	prefix	before	prepare, preview, preheat	prepping for celebration, spelling strategies
Week 4	Game & Puzzle Week	mis/mit	root	to send	transmit, mission, submit	sending clues, solving puzzles, decoding strategies

* December + Set 3 Prefixes, Suffixes, & Root Words Integrated Vocabulary Planning Chart

Week	Theme	Affix/Root	Type	Student-Friendly Definition	Example Words	Connection to Theme
Week 1	Polar Exploration	mob/mov/mot	root	to move	motion, remove, promote	movement in extreme conditions, survival actions
Week 2	International Mountain Day	meter/metr	root	to measure	altimeter, geometry, barometer	measuring elevation, terrain, and geological features
Week 3	Winter Solstice	-ence/-ance	suffix	act or condition of	balance, sequence, appearance	describing seasonal changes and time progression
Week 4	Winter Holidays	-al/-ial/-ual	suffix	relating to	festive, seasonal, traditional	holiday adjectives and figurative language for celebration

January + Set 3 Prefixes, Suffixes, & Root Words Integrated Vocabulary Planning Chart

Week	Theme	Affix/Root	Type	Student-Friendly Definition	Example Words	Connection to Theme
Week 1	New Year's & Motivation	fort/forc/val	root	strong	valor, fortify, effortless	strength and perseverance in resolutions
Week 2	Ben Franklin & Inventions	-able/-ible	suffix	can be done or capable	inventable, reliable, adaptable	describing inventions and scientific possibilities
Week 3	Fictional Characters	-ive	suffix	tending to, doing, or being	creative, supportive, reflective	character traits and descriptive vocabulary
Week 4	Dragons & Fantasy	phos/photo	root	light	shimmering, photograph, phosphorus	fantasy imagery, epic descriptions, and figurative language

📁 February + Set 4 Prefixes, Suffixes, & Root Words Integrated Vocabulary Planning Chart

Week	Theme	Affix/Root	Type	Student-Friendly Definition	Example Words	Connection to Theme
Week 1	Groundhogs & Polar Bears	loc/lieu	root	place	local, relocate, lieutenant	animal habitats, seasonal movement, myth vs. tradition
Week 2	Valentine's Day	-ess	suffix	female	actress, princess, seamstress	expressing emotion, roles in stories and relationships
Week 3	Retro Language	-ism	suffix	practice or characteristic	individualism, anachronism, snobbism	generational traits, outdated expressions, idioms
Week 4	Ferris Wheel Day	man/manu	root	hand	manual, maneuver, manuscript	mechanical motion, physics vocabulary, analogies

March + Set 4 Prefixes, Suffixes, & Root Words Integrated Vocabulary Planning Chart

Week	Theme	Affix/Root	Type	Student-Friendly Definition	Example Words	Connection to Theme
Week 1	Wildlife Awareness	cit/civ	root	city or citizen"	civilization, citizen, civic	human impact on wildlife, conservation vocabulary
Week 2	World Water Day	sub-	prefix	under or lower than	submerge, submarine, subsoil	water systems, climate vocabulary, multiple meanings
Week 3	St. Patrick's Day	-ian/-an	suffix	from or belonging to	Irishman, historian, musician	cultural identity, legends, figurative expressions
Week 4	Pi Day	form	root	to shape	formula, transform, information	geometry, math vocabulary, patterns and equations

🌐 April + Set 5 Prefixes, Suffixes, & Root Words Integrated Vocabulary Planning Chart

Week	Theme	Affix/Root	Type	Student-Friendly Definition	Example Words	Connection to Theme
Week 1	Mythical Creatures	fict/fac/fact/fic	root	made or done	fiction, manufacture, artifact	fantasy vocabulary, imaginative descriptions
Week 2	Easter	-ity	suffix	state or quality of	serenity, civility, clarity	descriptive writing using sensory and emotional vocabulary
Week 3	Earth Day & Arbor Day	vac	root	empty	vacant, evacuate, vacuum	environmental impact, pollution, conservation
Week 4	Bucket List Day	-ent/-ant	suffix	characterized by	adventurous, applicant, propellant	describing travel, adventure, and vivid experiences

May + Set 5 Prefixes, Suffixes, & Root Words Integrated Vocabulary Planning Chart

Week	Theme	Affix/Root	Type	Student-Friendly Definition	Example Words	Connection to Theme
Week 1	Sci-Fi & Mystery	cent-/kilo-	prefix	hundred or thousand	century, kilogram, kilobyte	sci-fi scale, space vocabulary, mysterious measurements
Week 2	Millionaire Day	pon/pose/posit	root	to put	deposit, position, compose	precision in storytelling, describing success and strategy
Week 3	Paper Airplane Day	cur/curs/cours	root	to run or go	course, current, cursive	flight vocabulary, cause-and-effect in science
Week 4	Hamburgers & Coke Day	-ish	suffix	somewhat or having a characteristic of	reddish, bookish, foolish	descriptive comparisons in food vocabulary and tone

Checklist of Skills



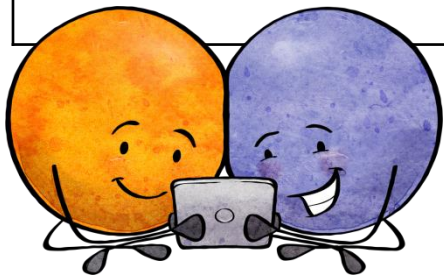
4th Grade Skill Checklist

✓ Dates and Activities Skill Covered	Skill
	Identify prefixes & suffixes and determine meaning of unknown words.
	Use root words to determine meaning.
	Determine the meaning of multiple-meaning words using context.
	Identify and use synonyms/antonyms in context.
	Use context clues to determine word meaning.
	Recognize common idioms, adages, and proverbs.
	Interpret similes and metaphors in context.
	Use reference materials (dictionary, thesaurus, glossary) to find meanings.



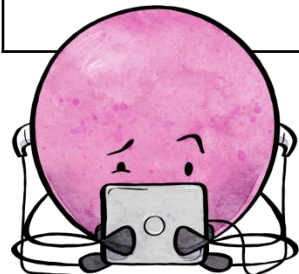
5th Grade Skill Checklist

✓ Dates and Activities Skill Covered	Skill
	Identify and use prefixes & suffixes in multi-syllable words.
	Use Greek and Latin roots to determine meaning.
	Determine meaning of multiple-meaning words and phrases.
	Distinguish among synonyms by shades of meaning (e.g., 'lurk' vs. 'stroll').
	Determine word meaning using context clues.
	Interpret figurative language including similes, metaphors, personification.
	Explain the meaning of common idioms, adages, and proverbs.
	Use reference materials efficiently to find word meaning and pronunciation.



6th Grade Skill Checklist

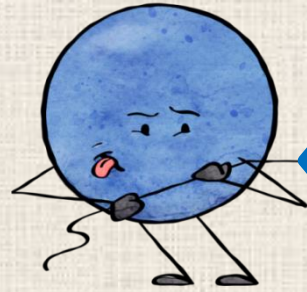
✓ Dates and Activities Skill Covered	Skill
	Determine meaning of unknown words using Greek and Latin roots and affixes.
	Use context clues for academic and domain-specific vocabulary.
	Interpret and analyze figurative language (similes, metaphors, personification, hyperbole).
	Recognize and explain the meaning of idioms, adages, and proverbs.
	Analyze the impact of word choice on meaning and tone.
	Distinguish among connotations and denotations (e.g., 'slim', 'skinny', 'gaunt').
	Verify meaning using multiple reference sources (print, digital).
	Interpret nuanced figurative language in literature and informational texts.





Credits

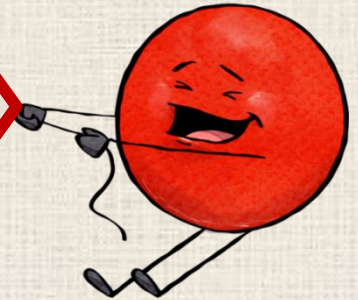




[Book Units Teacher Website](#)

[Teachers Pay Teachers Store](#)
[Gay Miller's](#)

[Pinterest](#)



[YouTube](#)



[Book Units Teacher Blog](#)

