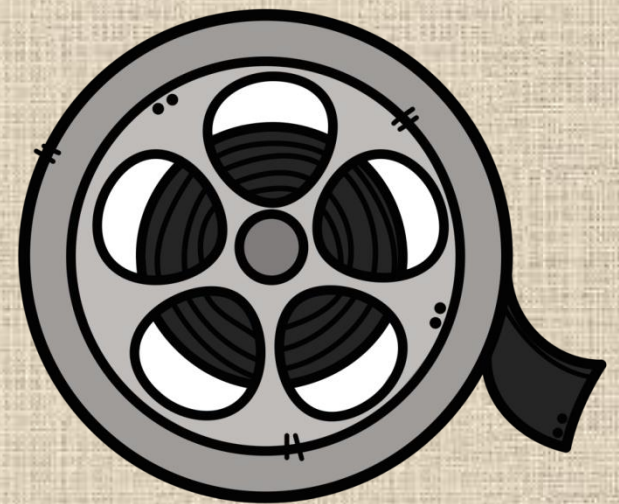


Using Animated Shorts to Teach Inference

Get the [Google Slide version](#) here.



Activity #1 - Inference



Lonely Island [2:49]

<https://www.youtube.com/watch?v=BuQSNkMpmFw>

<https://www.youtube.com/watch?v=6jK3BkvD4bE>

<https://www.youtube.com/watch?v=glFdrzey6Jw>



Alone: A Wolf's Winter [6:21]

<https://www.youtube.com/watch?v=lviabKgc-Lk>

<https://www.youtube.com/watch?v=wSgAOaTM8xo>

<https://www.youtube.com/watch?v=lviabKgc-Lk>

<https://www.youtube.com/watch?v=8HSrgOBRNMo>



Source of the Mountains [7:04]

<https://www.youtube.com/watch?v=AUH8XNbZOQY>

<https://www.youtube.com/watch?v=mnm-oWg4xXQ>

https://www.youtube.com/watch?v=r_E54MokNNM

Activity #1 - Inference

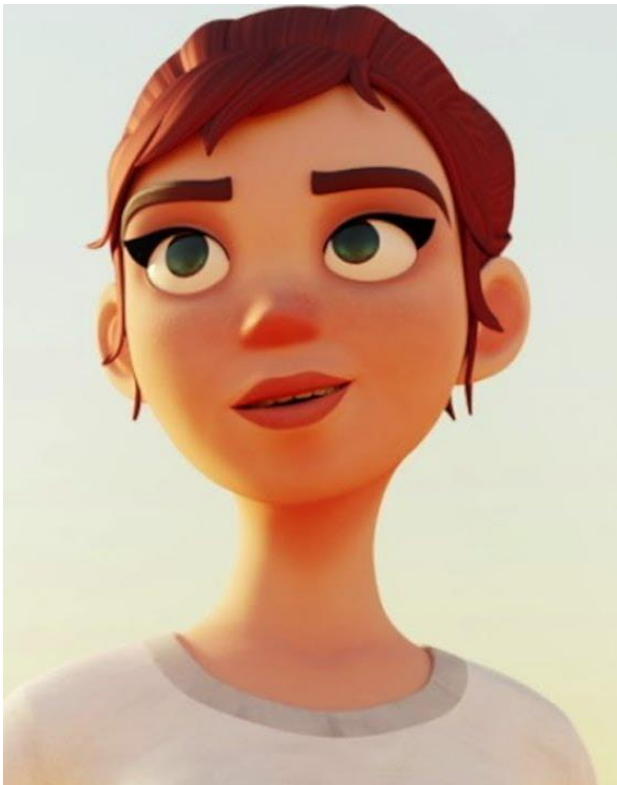


Stranded [7:01]

<https://www.youtube.com/watch?v=l2ClCxYURUg>

<https://www.youtube.com/watch?v=eqToXz2SgLA>

<https://www.youtube.com/watch?v=aJtoPiQRgfA>



"Spoon" by Arthur Chays [3:00]

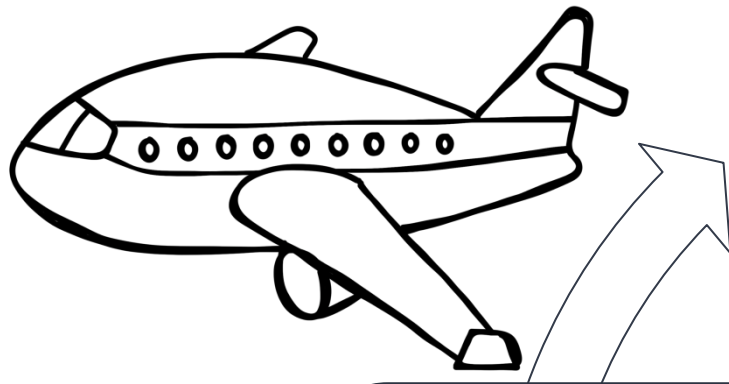
<https://www.youtube.com/watch?v=NEKXfzAPY-k>

<https://www.youtube.com/watch?v=wXhGd3lu2s0>

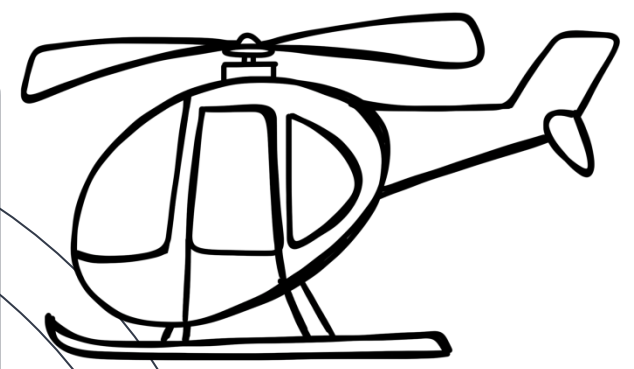
<https://www.youtube.com/watch?v=tcx16sFnPDA>

<https://www.youtube.com/watch?v=oWrKxJhh5QA>

Lonely Island



List ways the viewer knows the man has been on the island a long time.

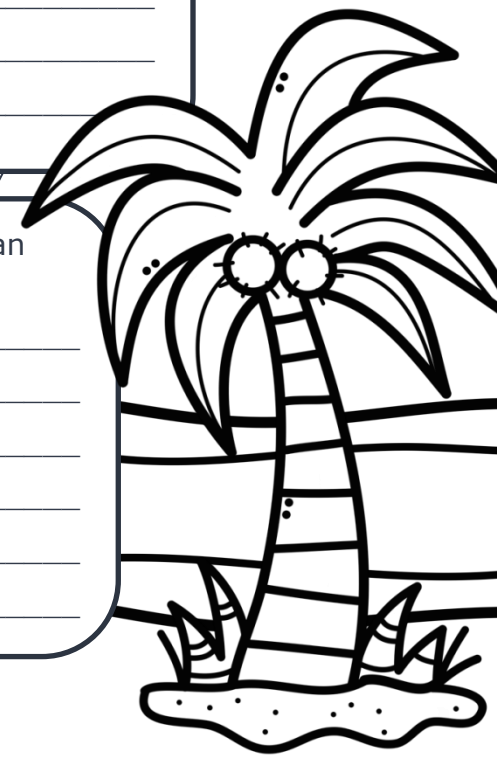


Why is there a tombstone on the beach?

Why does the man use a telescope?

What does "Next Level at 20" mean?

How many objects has the man knocked out of the sky?



Alone: A Wolf's Winter Inference

What does the alpha wolf do and why?

- _____

What does the banished wolf discover?

- _____

When the wolf hears a gun fire, he looks down into the valley and discovers ----.

- _____

What does the young wolf do when he sees the trapper?

- _____

Why does the trapper follow the injured wolf?

- _____

The film fades to black after the trapper falls through the ice. What most likely happened between this scene and the next?

- _____

What inferences can be made at the end of the film?

- _____



Source of the Mountains Inference

Background Information

The small creatures that bury themselves in the ground are called Paccha-Picchus. The other creature is a Kinko.

How does the setting change each day?



How do the characters react to the setting change?



Why does the Kinko decide he must go out into the world and see why the normal routine has changed?



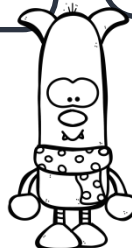
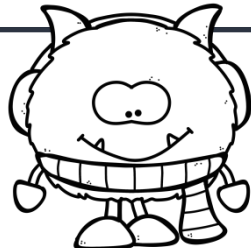
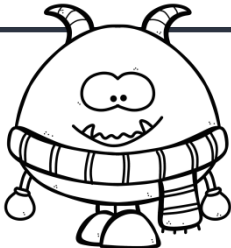
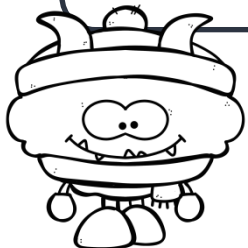
How do the Paccha-Picchus behave on days when the setting does not change?



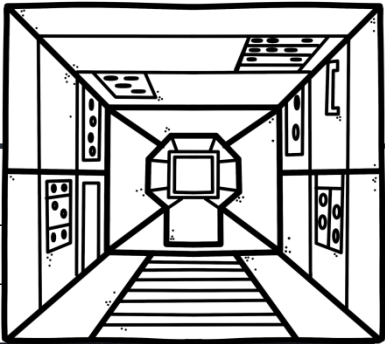
How do you know the Kinko's journey is long?



What do viewers discover when the camera



Stranded Inference



What is StarXpress?

Why does the driver decide to go through the dangerous asteroid field?

How is the spaceship damaged?

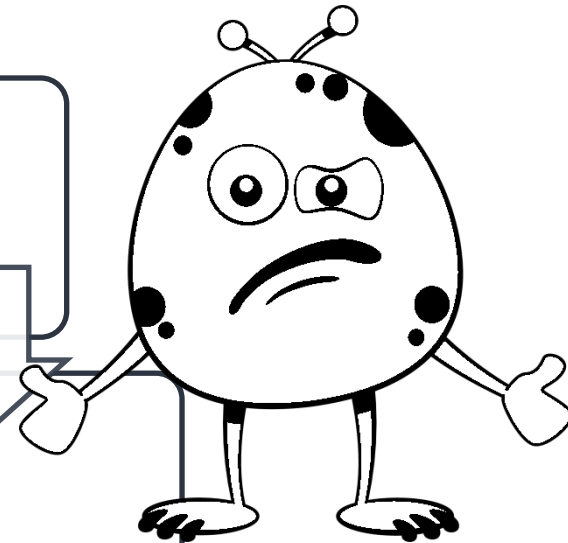
What is the biggest clue the driver is upset after trying to fix the spacecraft?

Why does the driver get rid of her cargo?

What inference can be made by the light shining at the end of the film?

Spoon Inference

How is Mom feeling and why?



PAUSE THE VIDEO AT :40.

What do you think Mom is going to do with the ladder?

PAUSE THE VIDEO AT 1:05.

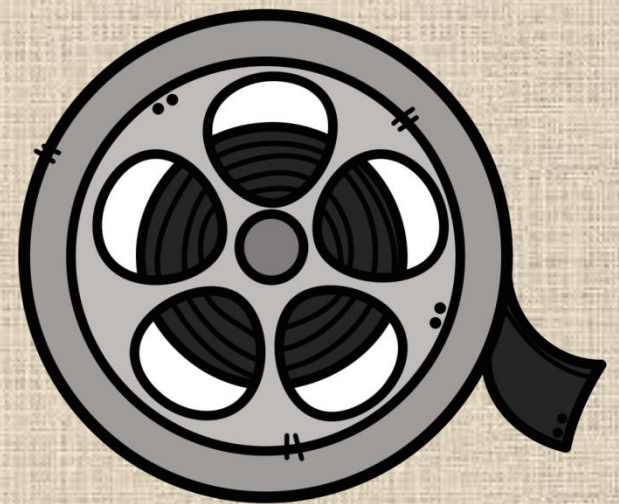
Why does Mom take a spoon with her?



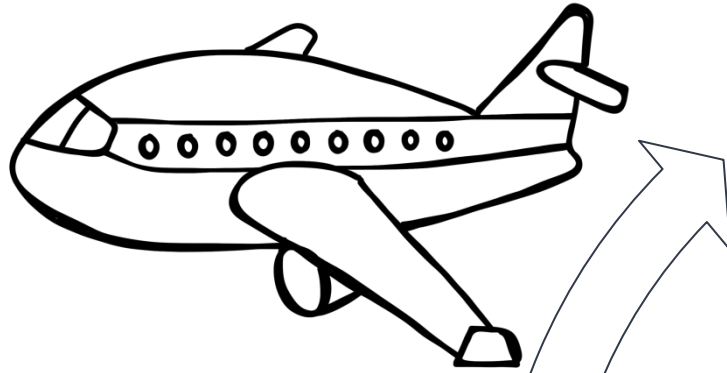
What was Mom looking for?

What is the irony at the end of the film?

Answer Key

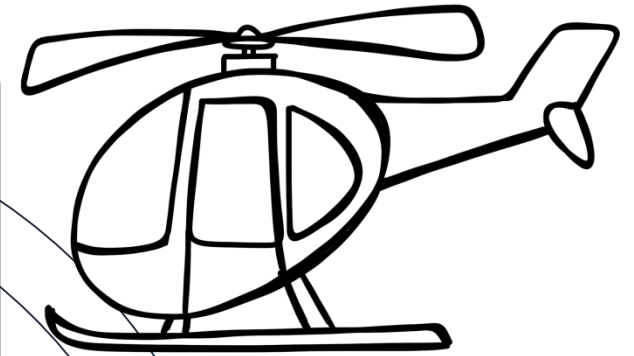


Lonely Island Answer Key



List ways the viewer knows the man has been on the island a long time.

He has built a hut.
He has learned how to catch food from the sea.
He has shot down 17 flying objects.



Why is there a tombstone on the beach?

The tombstone has a Superman emblem with the words Super Baby. It appears the man knocked down a superhero.

Why does the man use a telescope?

The man is looking for food in the ocean.

What does "Next Level at 20" mean?

The man considers knocking flying objects out of the sky a game. He has knocked down 17 items and will go to the next level when he knocks down 20. This is like he was playing a video game. Viewers can assume he will move off the island to a different location after he knocks down 20 flying objects.

How many objects has the man knocked out of the sky?

seventeen



[CCSS.ELA-Literacy.RL.4.1](#)

Refer to details and examples in a text when explaining what the text says explicitly and when drawing inferences from the text.

[CCSS.ELA-Literacy.RL.5.1](#)

Quote accurately from a text when explaining what the text says explicitly and when drawing inferences from the text.

[CCSS.ELA-Literacy.RL.6.1](#)

Cite textual evidence to support analysis of what the text says explicitly as well as inferences drawn from the text.

Alone: A Wolf's Winter Inference

What does the alpha wolf do and why?

- The alpha wolf forces a young wolf in the pack to go into exile because he was tasked with watching two cubs. When the young wolf wasn't watching, one of the cubs wanders away and falls off a cliff.

What does the banished wolf discover?

- The banished wolf comes across footprints in the snow. He follows the footprints to the camp of a trapper. On a sleigh at the camp, the young wolf sees a dead wolf.

When the wolf hears a gun fire, he looks down into the valley and discovers ----.

- His pack is running away from the trapper's gun shoots.

What does the young wolf do when he sees the trapper?

- He attacks the trapper and bites his arm. The trapper pulls out his knife. He cuts the young wolf's leg as he pushes the wolf away.

Why does the trapper follow the injured wolf?

- Answers will vary. Possible Answers
- He wants to make sure the wolf does not attack again.
- He wants the wolf's hide for his collection.

The film fades to black after the trapper falls through the ice. What most likely happened between this scene and the next?

- The young wolf manages to climb out of the lake onto the frozen ice.

What inferences can be made at the end of the film?

- The pack welcomes the young wolf back because he got rid of the danger. The trapper is no longer a threat thanks to the young wolf.



Source of the Mountains Inference

Background Information

The small creatures that bury themselves in the ground are called Paccha-Picchus. The other creature is a Kinko.

How does the setting change each day?

Each day a large mountain rolls under the camp of the Paccha-Picchus. When they rise up into the higher elevation, the climate changes to snow.

How do the characters react to the setting change?

The Paccha-Picchus love the snow. They are playful creatures and build snowmen. They have snowball fights and are happy.



Why does the Kinko decide he must go out into the world and see why the normal routine has changed?

The Kinko goes to look for the mountain. He wants the Paccha-Picchus to be playful. He is trying to figure out why things have changed.

How do the Paccha-Picchus behave on days when the setting does not change?

When the mountain does not roll up, the Paccha-Picchus keep their heads buried in the ground. They do not come out to play.

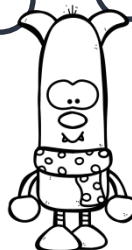
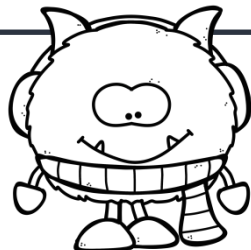
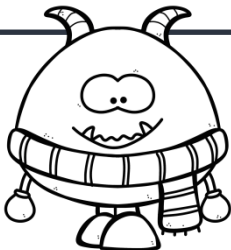


How do you know the Kinko's journey is long?

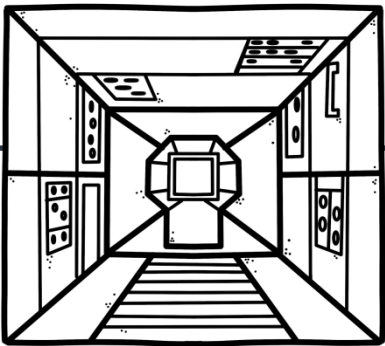
Kinko grows weary and almost sleepwalks. Day turns to night.

What do viewers discover when the camera backs away?
What is the source of the mountains?

The Kinko lives on the neck of a space creature who eats moons/small planets. When the space creature swallows the sphere, his neck bulges. (This is the rise of the mountains.)



Stranded Inference



What is StarXpress?

The StarXpress is a mail delivery system in outer space.

Why does the driver decide to go through the dangerous asteroid field?

The girl goes through the dangerous territory because she will receive a large bonus from the StarXpress Company if she gets the packages delivered more quickly.

How is the spaceship damaged?

Ironically, the spaceship is hit by a piece of floating debris from a wrecked StarXpress spaceship.

What is the biggest clue the driver is upset after trying to fix the spacecraft?

She has streaks down her face from crying?

Why does the driver get rid of her cargo?

She is hauling coffee mugs that say "Don't worry, "bee" happy."

What inference can be made by the light shining at the end of the film?

The shining light is a sign that someone is near. The driver will most likely be rescued.

Spoon Inference

How is Mom feeling and why?

Mom has had her limit with too many responsibilities. She is trying to prepare of dinner, her home, family, and work.

PAUSE THE VIDEO AT :40.

What do you think Mom is going to do with the ladder?

Mom is running away.

PAUSE THE VIDEO AT 1:05.

Why does Mom take a spoon with her?

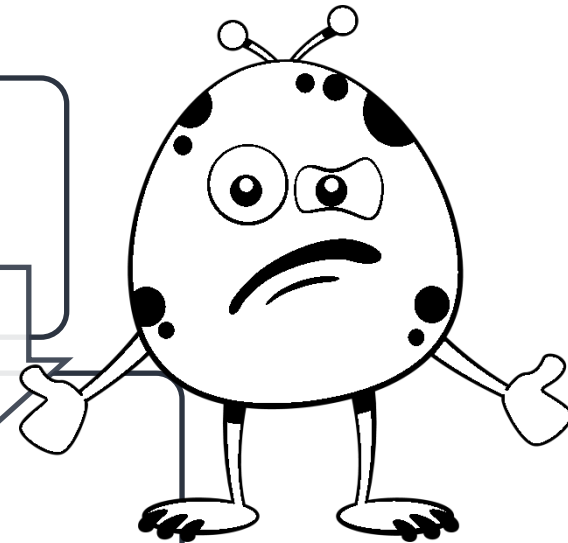
Answers will vary. Mom loses her spoon when her ladder rung breaks before the audience knows its purpose.

What was Mom looking for?

Peace and quiet. To be able to relax without anyone making any demands on her.

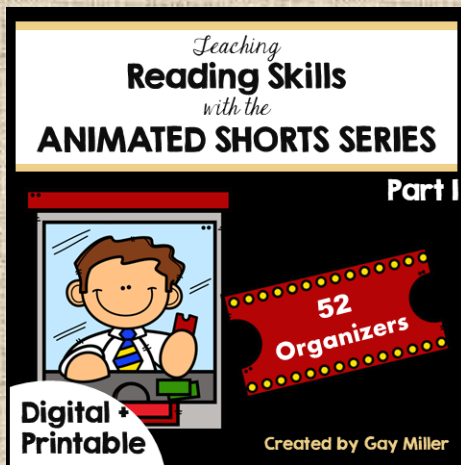
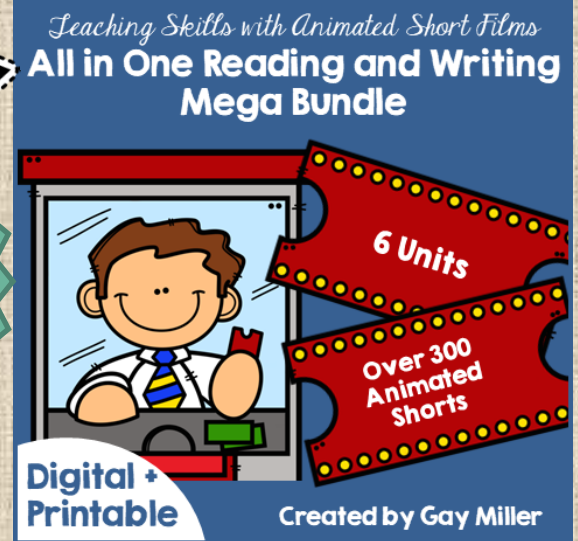
What is the irony at the end of the film?

The aliens ask Mom, "When are we eating?" She did not run far enough away to escape responsibilities.



Click the covers to go to the individual products.

Get all reading and writing short resources in this one Mega Bundle.



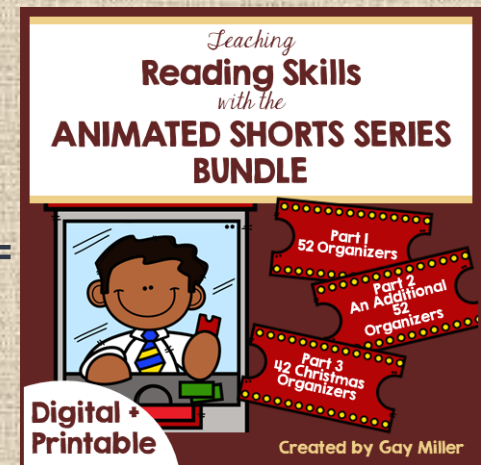
+



+



=



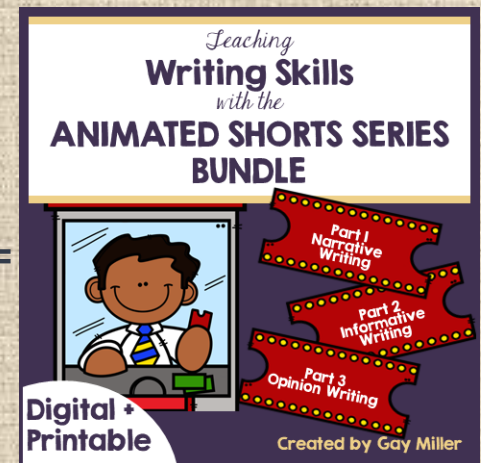
+



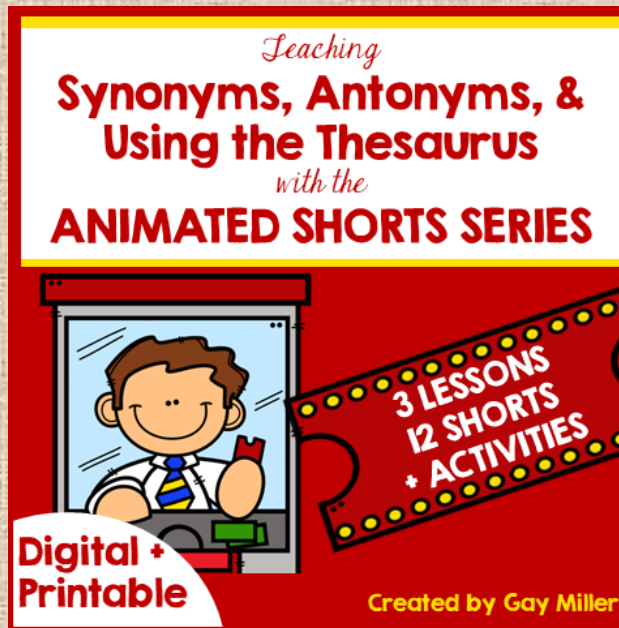
+



=



Teaching with Animated Shorts Minis



Coming out during the 2021-2022 School Year



New for the 2021-2022 School Year

Teaching
Spelling Skills
with the
ANIMATED SHORTS SERIES



**PART 1
PLURALS**

Digital +
Printable

Created by Gay Miller

Teaching
Spelling Skills
with the
ANIMATED SHORTS SERIES



**PART 2
VOWELS**

Digital +
Printable

Created by Gay Miller

Teaching
Spelling Skills
with the
ANIMATED SHORTS SERIES



**PART 3
SPECIAL VOWELS**

Digital +
Printable

Created by Gay Miller

Teaching
Spelling Skills
with the
ANIMATED SHORTS SERIES



**PART 4
VOWEL-CONSONANT
PATTERNS**

Digital +
Printable

Created by Gay Miller

Teaching
Spelling Skills
with the
ANIMATED SHORTS SERIES



**PART 5
R-CONTROLLED
VOWELS**

Digital +
Printable

Created by Gay Miller

Teaching
Spelling Skills
with the
ANIMATED SHORTS SERIES



**PART 6
SILENT LETTERS**

Digital +
Printable

Created by Gay Miller

Teaching
Spelling Skills
with the
ANIMATED SHORTS SERIES



**PART 7
ADDING SUFFIXES**

Digital +
Printable

Created by Gay Miller

Teaching
Spelling Skills
with the
ANIMATED SHORTS SERIES



**PART 8
WORDS FROM
OTHER LANGUAGES**

Digital +
Printable

Created by Gay Miller

Teaching
Spelling Skills
with the
**ANIMATED SHORTS SERIES
BUNDLE**



ALL 8 PARTS

Digital +
Printable

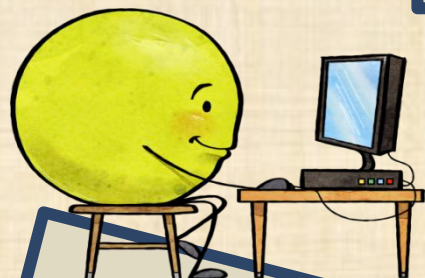
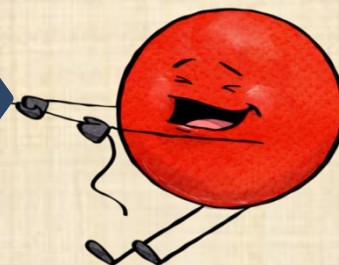
Created by Gay Miller



Credits



[Pinterest](#)



[Book Units Teacher Blog](#)

[Gay Miller's
Teachers Pay Teachers Store](#)



[YouTube](#)



[Book Units Teacher Website](#)

