

The Phantom Tollbooth

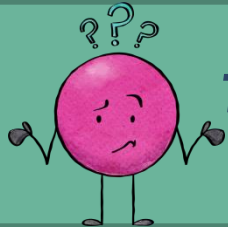
Preview

Try out this
unit. Scroll
down to see
sample
pages.



Which version of this unit do I need?

Version	Links to Digital Resources	Vocabulary Practice	Comprehension Questions	Constructed Writing Prompts	Skill Practice
The Phantom Tollbooth Digital + Printable	✓	✓	✓	✓	✓
The Phantom Tollbooth Printable		✓	✓	✓	✓



On the following pages, you will see snapshot examples for
The Phantom Tollbooth Digital + Printable Novel Study.

Be sure to look closely to see which version works best for your needs.



VOCABULARY RESOURCES

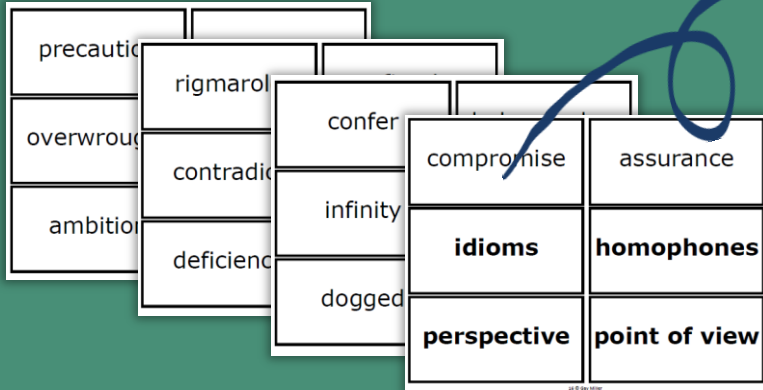
VOCABULARY BOOKMARKS



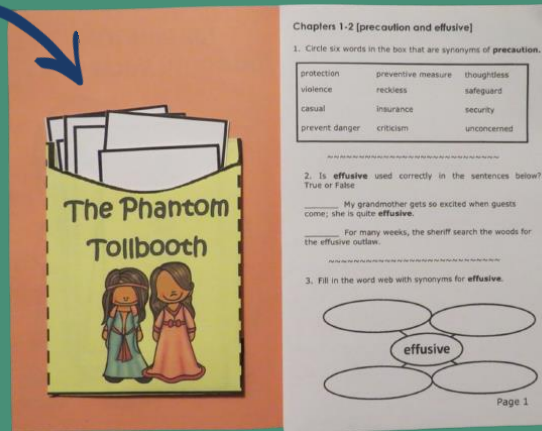
WORD LIST
Students practice with two focus words for each reading selection. A wordlist with definitions, synonyms, and sample sentences from the story is included.



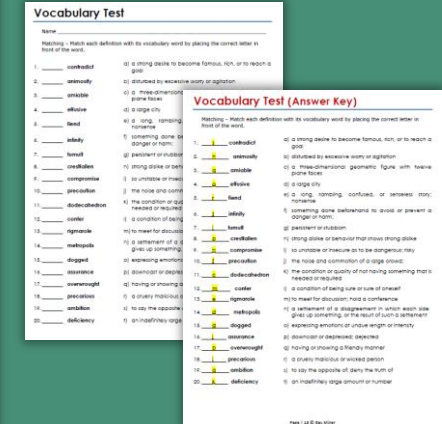
WORD CARDS



PRACTICE BOOK

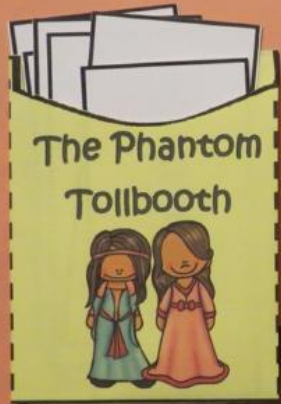


TEST WITH ANSWER KEY



DIGITAL VOCABULARY

Digital vocabulary practice is provided through Boom Learning Decks.



Chapters 1-2 [precaution and effusive]

1. Circle six words in the box that are synonyms of **precaution**.

protection	preventive measure	thoughtless
violence	reckless	safeguard
casual	insurance	security
prevent danger	criticism	unconcerned

2. Is **effusive** used correctly in the sentences below? True or False

_____ My grandmother gets so excited when guests come; she is quite **effusive**.

_____ For many weeks, the sheriff search the woods for the effusive outlaw.

3. Fill in the word web with synonyms for **effusive**.



Drag the synonyms of **precaution** to the synonym box and the antonyms of **precaution** to the antonym box.

Synonyms

Antonyms

thoughtless

preventive measure

violence

reckless

protection

safeguard



10 COMPREHENSION CHECKS

The Phantom Tollbooth - Chapters 1-2

1. Which word best describes Milo's attitude in Chapter 1?
- light-hearted
 - confused
 - discontented
 - overwhelmed
3. What can be inferred from Milo's ability to get out of the Doldrums?
- If you stay in the bored and lazy.
 - All places can be imagination.
 - Milo can get back on track by using his imagination.
 - The watchdog is going to be Milo's friend.
5. Fill in the blanks with one of the names of the seven dwarfs.

Doc Grumpy Happy Sneezy

In Chapter 1, Milo is most like this dwarf.

While driving down the main highway, Milo is most like this dwarf.

While talking to the Lethargians, Milo is most like this dwarf.

7. Sequence the following events by numbering them in the correct order.

- Milo builds a tollbooth and drives his toy car through.
- Milo becomes sleepy in the Doldrums.
- Milo doesn't want to do anything; he is bored.
- The watchdog helps Milo get back on the main highway.
- Milo finds a package with an envelope addressed to him.
- The Whether Man hurries Milo along.

The Phantom Tollbooth - Chapters 1-2

1. Which word best describes Milo's attitude in Chapter 1?
- light-hearted
 - confused
 - discontented
 - overwhelmed
3. What can be inferred from Milo's ability to get out of the Doldrums?
- If you stay in the Doldrums, you will be bored and lazy.
 - All places can be exciting if you use your imagination.
 - Milo can get back on track by using his imagination.
 - The watchdog is going to be Milo's friend.

5. Fill in the blanks with one of the names of the seven dwarfs.

Doc Grumpy Happy Sleepy Doxy Bashful Sneezy

In Chapter 1, Milo is most like this dwarf.

Grumpy

While driving down the main highway, Milo is most like this dwarf.

Sleepy

While talking to the Lethargians, Milo is most like this dwarf.

Sleepy

7. Sequence the following events by numbering them in the correct order.

- Milo builds a tollbooth and drives his toy car through.
- Milo becomes sleepy in the Doldrums.
- Milo doesn't want to do anything; he is bored.
- The watchdog helps Milo get back on the main highway.
- Milo finds a package with an envelope addressed to him.
- The Whether Man hurries Milo along.

2. Circle the correct answer in each set of brackets.

The Phantom Tollbooth is told mostly from the [first, second, third] person point of view. In some passages the narrator speaks to [Milo, the reader, the characters in the story].

4. The setting is important to the story because...

- Milo's attitude completely changes when he travels from his normal world into the fantasy world.
- The story is make-believe with places that don't exist in the real world.
- Milo must follow strict instructions from a rule book when he enters the fantasy land.
- Milo can get lost easily.

6. Match each character with a character trait.

- | | |
|----------------------|-------------------|
| <u>b</u> Lethargian | o) optimistic |
| <u>c</u> Whether Man | b) chameleon |
| <u>a</u> watchdog | c) nonstop talker |

8. Read this passage from the end of Chapter 2.

"He's the most peculiar person I've ever met," continued Milo—unaware of how many peculiar people he would shortly encounter.

Which literary device does this line contain?

- cliffhanger
- flashback
- figurative language
- foreshadowing

Explain why you selected this answer.

This passage tells the reader that Milo is going to soon be meeting peculiar people. This is foreshadowing (predicting) what is going to happen.

Number the details in the correct sequence.

- Milo builds a tollbooth and drives his toy car through.
- Milo becomes sleepy in the Doldrums.
- Milo doesn't want to do anything; he is bored.
- The watchdog helps Milo get back on the main highway.
- Milo finds a package with an envelope addressed to him.
- The Whether Man hurries Milo along.

21 CONSTRUCTED WRITING PROMPTS

Chapter 1 - Constructed Response - Character Traits
Describe Milo based on the details in Chapter 1. In the center box, draw a picture of Milo.


Quality Proof from Text	Picture of Milo	Quality Proof from Text
Quality Proof from Text		Quality Proof from Text

CCSS.ELA-LITERACY.W.4.3 Describe in depth a character, setting, or event, or a story or an issue.
CCSS.ELA-LITERACY.W.4.3 Compare and contrast two or more characters, settings, or events.
CCSS.ELA-LITERACY.W.4.3 Cite textual evidence to support analysis of what the text says explicitly as well as inferences drawn from the text.

Page 1 of 1

Full Page Answer Keys

Chapter 1 - Constructed Response - Character Traits
Describe Milo based on the details in Chapter 1. In the center box, draw a picture of Milo.

Quality Milo thinks learning is a waste of time. Proof from Text ... he regarded the process of seeking knowledge as the greatest waste of time.	Picture of Milo 	Quality Milo is bored. Proof from Text ... "There's nothing for me to do, nowhere to go, and hardly anything worth seeing."
Quality Milo has no desire to do anything. Proof from Text He looked glumly at all the things he owned ... too much trouble ... automobile he hadn't driven in months—or was it years?—		Quality Milo is a complainer.

CCSS.ELA-LITERACY.W.4.3 Describe in depth a character, setting, or event, or a story or an issue.
CCSS.ELA-LITERACY.W.4.3 Compare and contrast two or more characters, settings, or events.
CCSS.ELA-LITERACY.W.4.3 Cite textual evidence to support analysis of what the text says explicitly as well as inferences drawn from the text.

Page 1 of 1

Chapter 1 - Constructed Response - Character Traits
Describe Milo based on the details in Chapter 1. In the center box, draw a picture of Milo.

Quality Proof from Text	Picture of Milo	Quality Proof from Text
Quality Proof from Text		Quality Proof from Text

CCSS.ELA-LITERACY.W.4.3 Describe in depth a character, setting, or event, or a story or an issue.
CCSS.ELA-LITERACY.W.4.3 Compare and contrast two or more characters, settings, or events.
CCSS.ELA-LITERACY.W.4.3 Cite textual evidence to support analysis of what the text says explicitly as well as inferences drawn from the text.

Page 1 of 1

Chapter 1 - Constructed Response - Character Traits

Describe Milo based on the details in Chapter 1. In the center box, draw a picture of Milo.

Quality
Type answer here.

Proof from Text
Type answer here.



Quality
Type answer here.

Proof from Text
Type answer here.

Quality
Type answer here.

Proof from Text
Type answer here.

Quality
Type answer here.

Proof from Text
Type answer here.

© Gay Miller

with and without
CCSS



Gay Miller's Phantom Tollbooth Novel Unit is outstanding! I used it with two autistic children who have limited reading interests. Not only is the Phantom Tollbooth a wonderful book, but Gay's engaging and thoughtful activities enhanced the boys' reading experience. The boys finished the story and unit activities and agreed that the Phantom Tollbooth was a new favorite - thus widening their limited reading scope! Thank you, Gay! You continue to produce units that meet the diverse needs of children. I really appreciate that!

-Heather



Love that there is a digital version too. It made going to online learning easy. The BOOM cards are engaging and easy to assign.

-Young



My daughter loves interactive notebooks, and this one is "fun and interesting". High praise from a difficult to please preteen!

-3GigglingTwirls



This was a great resource for our book study! Very well put together. I will absolutely be looking to this creator for more resources!

-Amanda



I used this during the summer for a book club. The students loved this resources. It was perfect for keeping our conversations on topic and gave us something to discuss when the students got stuck.

-Robin

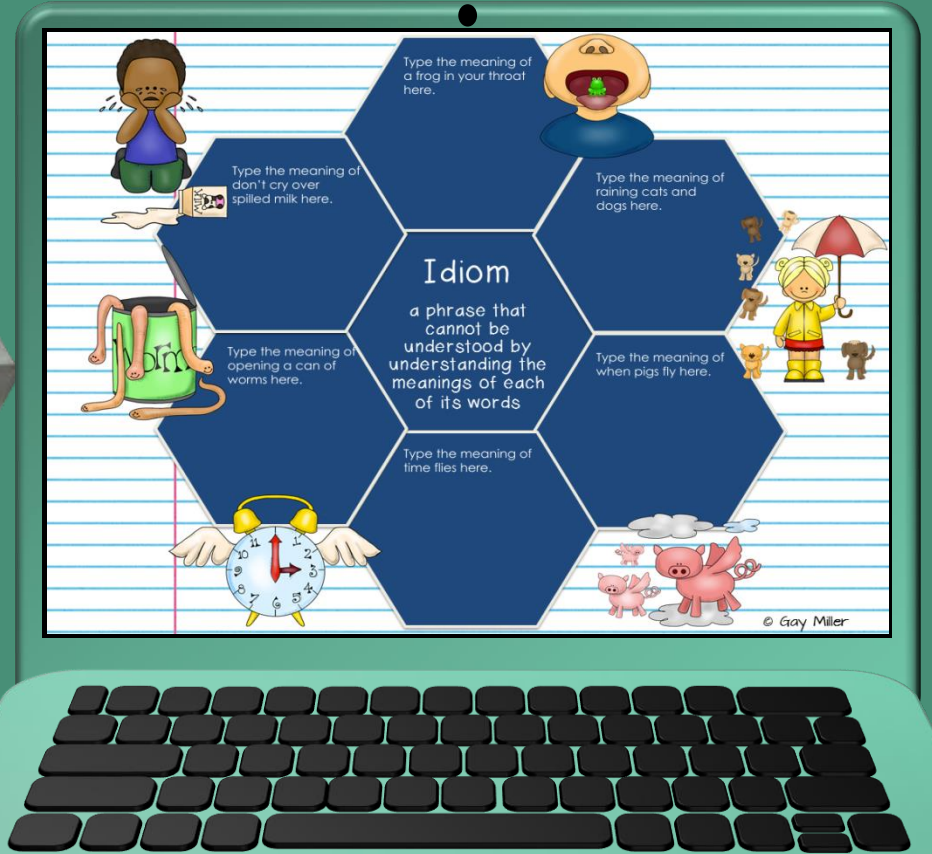
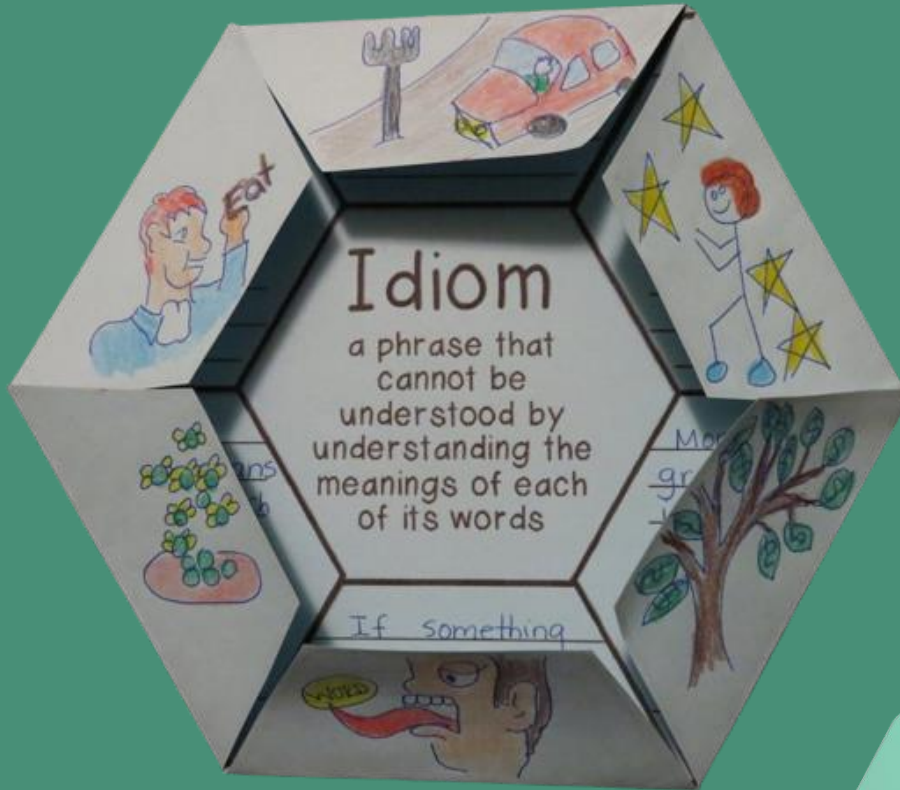


This is a very thorough novel study, my favorite part is the Boom Cards, they are easy to use and cover a lot of content.

-Dallas

SAMPLE ACTIVITIES

Activities are provided in both printable and digital



What are Boom Cards?

Boom Cards are digital task cards that students play on the Boom Learning Website.

They...

- ✓ are fully digital – require no printing, paper, ink, etc.
- ✓ may be used on all modern browsers
- ✓ are played on devices connected to the Internet
- ✓ can be used for student practice at no cost to you

When you purchase this novel study from TPT, you will receive special links to these Boom Cards. When you click on one of these links, you will be asked to sign into your account or create a free account at the Boom Learning Website. The special links in the paid resource let the Boom Learning site know you have purchased the deck. When you click the link, Boom Learning sends the Boom Deck to your Boom Library, so your students can access them. Students can play for free or data will be tracked for you with the Boom Learning Paid Subscription.

[Click here](#) for a playable preview on Boom Learning.

Drag the synonyms of **effusive** to the boxes on the word web.

overenthusiastic

bashful

extroverted

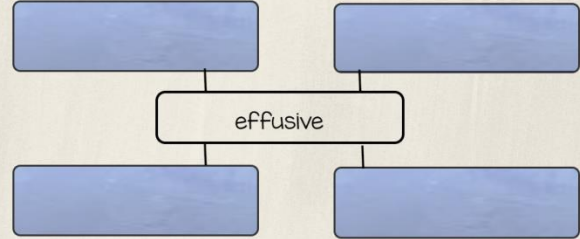
demonstrative

shy

timid

withdrawn

talkative, loud



Which word best describes Milo's attitude in Chapter 1?



light-hearted



confused



discontented



overwhelmed

The Phantom Tollbooth

Novel Study



Created by Gay Miller





**Thank you for
downloading this novel
study sample.**

**On the next pages, you will find the following pages
from the unit including:**

- **Table of Contents for the Digital + Printable Version**
- **Lesson Plans at a Glance for the Full Unit**

FREE SAMPLE PAGES

**The First Reading Selection plus Answer Keys
(These pages are found in all versions of this unit.)**

- **Vocabulary Practice**
- **Comprehension Questions**
- **Constructed Response Writing Prompt
(with and without the Common Core
Standards)**



**Are you wondering what other novel
studies I have available? You can see
the complete list [here](#).**

Table of Contents

Lesson Plans at a Glance	5
SECTION #1 - Links to Digital Resources	6
Materials Needed	12
SECTION #2 - Vocabulary	13
Teacher Information	14
Vocabulary List	17
Vocabulary Bookmarks	23
Vocabulary Word Cards	25
Vocabulary Practice Booklet	30
Vocabulary Test	49
Teacher Information	50
SECTION #3 - Student Packet for Comprehension and Writing	56
Constructed Response ~ Chapter 1 - Character Traits of Milo	57
Constructed Response ~ Chapter 2 - Cause and Effect	58
Comprehension Questions ~ Chapters 1-2	59
Constructed Response ~ Chapter 3 - Setting	60
Constructed Response ~ Chapter 4 - Comparing Characters (Bee and Humbug)	61
Comprehension Questions ~ Chapters 3 - 4	62
Constructed Response ~ Chapter 5 - Milo's Actions vs. Your Actions	63
Constructed Response ~ Chapter 6 - Comparing Characters (Kings)	64
Comprehension Questions ~ Chapters 5-6	65
Constructed Response ~ Chapter 7 - Figurative Language	66
Constructed Response ~ Chapter 8 - Problem and Solution Chain	67
Comprehension Questions ~ Chapters 7-8	68
Constructed Response ~ Chapter 9 - Point of View	70
Constructed Response ~ Chapter 10 - Perspectives	71
Comprehension Questions ~ Chapters 9-10	72
Constructed Response ~ Chapter 11 - Summarizing	73
Constructed Response ~ Chapter 12 - Comparing and Contrasting Versions	74

Comprehension Questions ~ Chapters 11-12	77
Constructed Response ~ Chapter 13 - Theme	78
Constructed Response ~ Chapter 14 - Comparing Characters	79
Comprehension Questions ~ Chapters 13-14	80
Constructed Response ~ Chapter 15 - Comparing Settings	81
Constructed Response ~ Chapter 16 - Summarizing	82
Comprehension Questions ~ Chapters 15-16	83
Constructed Response ~ Chapter 17 - Figurative Language	84
Constructed Response ~ Chapters 17-18 - Plot Details	85
Comprehension Questions ~ Chapters 17-18	86
Constructed Response ~ Chapter 19 - Theme	87
Constructed Response ~ Chapter 20 - Character Change	88
Comprehension Questions ~ Chapters 19-20	89
Constructed Response ~ Comparing the Book to the Movie	90
Constructed Response ~ Meaning, Tone, and Beauty	91
SECTION #4 - Answer Keys for Comprehension and Constructed Response Writing Questions	92
SECTION #5 - Student Packet without Teaching Standards	129
SECTION #6 – Activities - Skills	165
Activity #1 ~ Character Traits Mini Books (Character Traits)	166
Activity #2 ~ Milo’s Travel Journal (Summarizing and Settings)	182
Activity #3 ~ King’s Azaz’s Cabinet [Connotation and Denotation]	192
Activity #4 ~ Synonym Buns (Synonyms and Shades of Meaning)	196
Activity #5 ~ Alec Bing’s Lesson (Point of View an Perspectives)	206
Activity #6 ~ Different Versions of the Story (Meaning, Tone, & Beauty)	218
Activity #7 ~ Jumping to Conclusions and Other Idioms	224
Activity #8 ~ The Whether Man, The Which [Not Witch], and the Dirty Bird Homophones	226
Activity #9 ~ Figurative Language	234
Activity #10 ~ Plot Diagram	251
Credits	261

Lesson Plans at a Glance

Read	Vocabulary	Vocabulary Practice Book	Comprehension Questions	Constructed Response Question	Skill Practice
Chapter 1	precaution	Page 1		Character Traits of Milo	Activity #1 Character Traits
Chapter 2	effusive		Chapters 1-2	Cause and Effect	Activity #2 Milo's Travel Journal
Chapter 3	overwrought	Page 2		Setting	
Chapter 4	tumult		Chapters 3-4	Comparing Characters (Bee and Humbug)	
Chapter 5	ambition	Page 3		Milo's Actions vs. Your Actions	Activity #3 Connotation
Chapter 6	animosity		Chapters 5-6	Comparing Characters (Kings)	
Chapter 7	rigmarole	Page 4		Figurative Language	Activity #4 Synonyms and Shades of Meaning
Chapter 8	fiend		Chapters 7-8	Problem and Solution Chain	
Chapter 9	contradict	Page 5		Point of View	Activity #5 Point of View and Perspective
Chapter 10	metropolis	Page 6	Chapters 9-10	Perspectives	
Chapter 11	deficiency	Page 7		Summarizing	Activity # 6 Meaning, Tone, and Beauty
Chapter 12	crestfallen		Chapters 11-12	Comparing and Contrasting Versions	
Chapter 13	confer	Page 8		Theme	Activity #7 Idioms
Chapter 14	dodecahedron		Chapters 13-14	Comparing Characters	
Chapter 15	infinity	Page 9		Comparing Settings	Activity #8 Homophones
Chapter 16	amiable		Chapters 15-16	Summarizing	
Chapter 17	dogged	Page 10		Figurative Language	Activity #9 Figurative Language
Chapter 18	precarious		Chapters 17-18	Plot Details	
Chapter 19	compromise	Page 11		Theme	Activity #10 Plot Development Roller Coaster
Chapter 20	assurance	Page 12	Chapters 19-20	Character Change	
	Vocabulary Test			Comparing the Movie to the Book	

Vocabulary Review

Write a synonym for each word listed:

1. amiable _____

2. crestfallen _____

3. infinity _____

4. precarious _____

5. deficiency _____

6. assurance _____

7. confer _____

8. compromise _____

9. dogged _____

10. dodecahedron _____

Chapters 1-2 [precaution and effusive]

1. Circle six words in the box that are synonyms of **precaution**.

protection	preventive measure	thoughtless
violence	reckless	safeguard
casual	insurance	security
prevent danger	criticism	unconcerned



2. Is **effusive** used correctly in the sentences below?
True or False

_____ My grandmother gets so excited when guests come; she is quite **effusive**.

_____ For many weeks, the sheriff searched the woods for the **effusive** outlaw.



3. Fill in the word web with synonyms for **effusive**.



Vocabulary Review

Write a synonym for each word listed:

1. **amiable** agreeable
2. **crestfallen** depressed
3. **infinity** limitlessness
4. **precarious** insecure
5. **deficiency** shortage
6. **assurance** self-confidence
7. **confer** deliberate
8. **compromise** bargain
9. **dogged** persistent
10. **dodecahedron** geometric figure with twelve plane faces

Chapters 1-2 [precaution and effusive]

1. Circle six words in the box that are synonyms of **precaution**.

protection	preventive measure	thoughtless
violence	reckless	safeguard
casual	insurance	security
prevent danger	criticism	unconcerned



2. Is **effusive** used correctly in the sentences below?
True or False

T My grandmother gets so excited when guests come; she is quite **effusive**.

F For many weeks, the sheriff searched the woods for the **effusive** outlaw.



3. Fill in the word web with synonyms for **effusive**.



Chapter 1 ~ Constructed Response – Character Traits

Describe Milo based on the details in Chapter 1. In the center box, draw a picture of Milo.

Quality

Proof from Text

Picture of Milo

Quality

Proof from Text

Quality

Proof from Text

Quality

Proof from Text

[CCSS.ELA-Literacy.RL.4.3](#) Describe in depth a character, setting, or event in a story or drama, drawing on specific details in the text (e.g., a character's thoughts, words, or actions).

[CCSS.ELA-Literacy.RL.5.3](#) Compare and contrast two or more characters, settings, or events in a story or drama, drawing on specific details in the text (e.g., how characters interact).

[CCSS.ELA-Literacy.RL.6.1](#) Cite textual evidence to support analysis of what the text says explicitly as well as inferences drawn from the text.

Chapter 2 ~ Constructed Response – Cause and Effect

Complete the cause and effect chart to explain the events in Chapter 2. Then use the facts from your chart to write a page explaining the series of events.

Cause

The Whether Man talks nonstop about navigation and the weather..

Effect

Cause

Milo begins daydreaming while he drives down the peaceful highway.

Effect

Cause

The road becomes monotonous with the same endless series of curves.

Effect

Cause

The Lethargarians ask Milo to join them on their holiday to nowhere..

Effect

Cause

The watchdog tells Milo how to get out to the Doldrums..

Effect

[CCSS.ELA-Literacy.RL.4.1](#) Refer to details and examples in a text when explaining what the text says explicitly and when drawing inferences from the text.

[CCSS.ELA-Literacy.RL.5.1](#) Quote accurately from a text when explaining what the text says explicitly and when drawing inferences from the text.

[CCSS.ELA-Literacy.RL.6.1](#) Cite textual evidence to support analysis of what the text says explicitly as well as inferences drawn from the text.

The Phantom Tollbooth ~ Chapters 1-2

<p>1. Which word best describes Milo's attitude in Chapter 1?</p> <p>a. light-hearted b. confused c. discontented d. overwhelmed</p>	<p>2. Circle the correct answer in each set of brackets.</p> <p>The Phantom Tollbooth is told mostly from the [first, second, third] person point of view. In some passages the narrator speaks to [Milo, the reader, the characters in the story].</p>
<p>3. What can be inferred from Milo's ability to get out of the Doldrums?</p> <p>a. If you stay in the Doldrums, you will be bored and lazy. b. All places can be exciting if you use your imagination. c. Milo can get back on track by using his imagination. d. The watchdog is going to be Milo's friend.</p>	<p>4. The setting is important to the story because---</p> <p>a. Milo's attitude completely changes when he travels from his normal world into the fantasy world. b. The story is make-believe with places that don't exist in the real world. c. Milo must follow strict instructions from a rule book when he enters the fantasy land. d. Milo can get lost easily.</p>
<p>5. Fill in the blanks with one of the names of the seven dwarfs.</p>	<p>6. Match each character with a character trait.</p> <p>_____ Lethargian a) optimistic _____ Whether Man b) chameleon _____ watchdog c) nonstop talker</p>
<p>Doc Grumpy Happy Sleepy Dopey Bashful Sneezzy</p> <p>In Chapter 1, Milo is most like this dwarf. _____</p> <p>While driving down the main highway, Milo is most like this dwarf. _____</p> <p>While talking to the Lethargians, Milo is most like this dwarf. _____</p>	<p>7. Sequence the following events by numbering them in the correct order.</p> <p>_____ Milo builds a tollbooth and drives his toy car through. _____ Milo becomes sleepy in the Doldrums. _____ Milo doesn't want to do anything; he is bored. _____ The watchdog helps Milo get back on the main highway. _____ Milo finds a package with an envelope addressed to him. _____ The Whether Man hurries Milo along.</p> <p>8. Read this line from the end of Chapter 2. He's the most peculiar person I've ever met," continued Milo—unaware of how many peculiar people he would shortly encounter.</p> <p>Which literary device does this line contain?</p> <p>a. cliffhanger b. flashback c. figurative language d. foreshadowing</p> <p>Explain why you selected this answer.</p> <p>_____</p> <p>_____</p>

Chapter 1 ~ Constructed Response – Character Traits

Describe Milo based on the details in Chapter 1. In the center box, draw a picture of Milo.

Quality

Milo thinks learning is a waste of time.

Proof from Text

. . . . he regarded the process of seeking knowledge as the greatest waste of time.

Quality

Milo has no desire to do anything.

Proof from Text

He looked glumly at all the things he owned . . . too much trouble . . . automobile he hadn't driven in months—or was it years?—

Picture of Milo



Quality

Milo is bored.

Proof from Text

. . . "there's nothing for me to do, nowhere I'd care to go, and hardly anything worth seeing."

Quality

Milo is a complainer.

Proof from Text

Even after Milo finds the tollbooth gift, he's not happy. "The least they could have done was to send a highway with it, for it's terribly impractical without one."

[CCSS.ELA-Literacy.RL.4.3](#) Describe in depth a character, setting, or event in a story or drama, drawing on specific details in the text (e.g., a character's thoughts, words, or actions).

[CCSS.ELA-Literacy.RL.5.3](#) Compare and contrast two or more characters, settings, or events in a story or drama, drawing on specific details in the text (e.g., how characters interact).

[CCSS.ELA-Literacy.RL.6.1](#) Cite textual evidence to support analysis of what the text says explicitly as well as inferences drawn from the text.

Chapter 2 ~ Constructed Response – Cause and Effect

Complete the cause and effect chart to explain the events in Chapter 2. Then use the facts from your chart to write a page explaining the series of events.

Cause

The Whether Man talks nonstop about navigation and the weather..

Effect

Milo decides to quickly leave Expectations, or he will spend all his time wondering.

Cause

Milo begins daydreaming while he drives down the peaceful highway.

Effect

Milo takes a wrong turn.

Cause

The road becomes monotonous with the same endless series of curves.

Effect

Milo grows sleepy, and his car stops.

Cause

The Lethargarians ask Milo to join them on their holiday to nowhere..

Effect

Milo agrees to go until the watchdog races up.

Cause

The watchdog tells Milo how to get out to the Doldrums..

Effect

Milo starts thinking all kinds of thoughts, and the car starts moving again.

[CCSS.ELA-Literacy.RL.4.1](#) Refer to details and examples in a text when explaining what the text says explicitly and when drawing inferences from the text.

[CCSS.ELA-Literacy.RL.5.1](#) Quote accurately from a text when explaining what the text says explicitly and when drawing inferences from the text.

[CCSS.ELA-Literacy.RL.6.1](#) Cite textual evidence to support analysis of what the text says explicitly as well as inferences drawn from the text.

The Phantom Tollbooth ~ Chapters 1-2

<p>1. Which word best describes Milo's attitude in Chapter 1?</p> <p>a. light-hearted b. confused c. discontented d. overwhelmed</p>	<p>2. Circle the correct answer in each set of brackets.</p> <p>The Phantom Tollbooth is told mostly from the [first, second, third] person point of view. In some passages the narrator speaks to [Milo, the reader, the characters in the story].</p>
<p>3. What can be inferred from Milo's ability to get out of the Doldrums?</p> <p>a. If you stay in the Doldrums, you will be bored and lazy. b. All places can be exciting if you use your imagination. c. Milo can get back on track by using his imagination. d. The watchdog is going to be Milo's friend.</p>	<p>4. The setting is important to the story because--.</p> <p>a. Milo's attitude completely changes when he travels from his normal world into the fantasy world. b. The story is make-believe with places that don't exist in the real world. c. Milo must follow strict instructions from a rule book when he enters the fantasy land. d. Milo can get lost easily.</p>
<p>5. Fill in the blanks with one of the names of the seven dwarfs.</p> <p>Doc Grumpy Happy Sleepy Dopey Bashful Sneezzy</p> <p>In Chapter 1, Milo is most like this dwarf. _____ Grumpy _____</p> <p>While driving down the main highway, Milo is most like this dwarf. _____ Happy _____</p> <p>While talking to the Lethargarians, Milo is most like this dwarf. _____ Sleepy _____</p>	<p>6. Match each character with a character trait.</p> <p>___ b ___ Lethargian a) optimistic ___ c ___ Whether Man b) chameleon ___ a ___ watchdog c) nonstop talker</p>
<p>7. Sequence the following events by numbering them in the correct order.</p> <p>___ 3 ___ Milo builds a tollbooth and drives his toy car through. ___ 5 ___ Milo becomes sleepy in the Doldrums. ___ 1 ___ Milo doesn't want to do anything; he is bored. ___ 6 ___ The watchdog helps Milo get back on the main highway. ___ 2 ___ Milo finds a package with an envelope addressed to him. ___ 4 ___ The Whether Man hurries Milo along.</p>	<p>8. Read this passage from the end of Chapter 2.</p> <p>He's the most peculiar person I've ever met," continued Milo—unaware of how many peculiar people he would shortly encounter.</p> <p>Which literary device does this line contain?</p> <p>a. cliffhanger b. flashback c. figurative language d. foreshadowing</p> <p>Explain why you selected this answer.</p> <p>This passage tells the reader that Milo is going to soon be meeting peculiar people. This is foreshadowing (predicting) what is going to happen.</p>

Addendum

Constructed Response Questions without Common Core State Standards



Important Update

Originally 46 states adopted the Common Core State Standards. Many teachers have commented that they love having the standards on pages with constructed response writing prompts for accountability reasons. Now educational trends are changing. Many states have repealed Common Core and adopted their own state standards. To meet the needs of teachers both using and not using Common Core Standards, I have opted to provide the writing questions both with and without standards.

To make creating a printable student packet easier, the comprehension and constructed response questions are both included in this section.

Chapter 1 ~ Constructed Response – Character Traits

Describe Milo based on the details in Chapter 1. In the center box, draw a picture of Milo.

Quality

Proof from Text

Picture of Milo

Quality

Proof from Text

Quality

Proof from Text

Quality

Proof from Text

Chapter 2 ~ Constructed Response – Cause and Effect

Complete the cause and effect chart to explain the events in Chapter 2. Then use the facts from your chart to write a page explaining the series of events.

Cause

The Whether Man talks nonstop about navigation and the weather..

Effect

Cause

Milo begins daydreaming while he drives down the peaceful highway.

Effect

Cause

The road becomes monotonous with the same endless series of curves.

Effect

Cause

The Lethargarians ask Milo to join them on their holiday to nowhere..

Effect

Cause


The watchdog tells Milo how to get out to the Doldrums..

Effect

The Phantom Tollbooth ~ Chapters 1-2

<p>1. Which word best describes Milo's attitude in Chapter 1?</p> <p>a. light-hearted b. confused c. discontented d. overwhelmed</p>	<p>2. Circle the correct answer in each set of brackets.</p> <p>The Phantom Tollbooth is told mostly from the [first, second, third] person point of view. In some passages the narrator speaks to [Milo, the reader, the characters in the story].</p>
<p>3. What can be inferred from Milo's ability to get out of the Doldrums?</p> <p>a. If you stay in the Doldrums, you will be bored and lazy. b. All places can be exciting if you use your imagination. c. Milo can get back on track by using his imagination. d. The watchdog is going to be Milo's friend.</p>	<p>4. The setting is important to the story because---</p> <p>a. Milo's attitude completely changes when he travels from his normal world into the fantasy world. b. The story is make-believe with places that don't exist in the real world. c. Milo must follow strict instructions from a rule book when he enters the fantasy land. d. Milo can get lost easily.</p>
<p>5. Fill in the blanks with one of the names of the seven dwarfs.</p>	<p>6. Match each character with a character trait.</p> <p>_____ Lethargian a) optimistic _____ Whether Man b) chameleon _____ watchdog c) nonstop talker</p>
<p>Doc Grumpy Happy Sleepy Dopey Bashful Sneazy</p> <p>In Chapter 1, Milo is most like this dwarf. _____</p> <p>While driving down the main highway, Milo is most like this dwarf. _____</p> <p>While talking to the Lethargians, Milo is most like this dwarf. _____</p>	<p>7. Sequence the following events by numbering them in the correct order.</p> <p>_____ Milo builds a tollbooth and drives his toy car through. _____ Milo becomes sleepy in the Doldrums. _____ Milo doesn't want to do anything; he is bored. _____ The watchdog helps Milo get back on the main highway. _____ Milo finds a package with an envelope addressed to him. _____ The Whether Man hurries Milo along.</p> <p>8. Read this line from the end of Chapter 2. He's the most peculiar person I've ever met," continued Milo—unaware of how many peculiar people he would shortly encounter.</p> <p>Which literary device does this line contain?</p> <p>a. cliffhanger b. flashback c. figurative language d. foreshadowing</p> <p>Explain why you selected this answer.</p> <p>_____</p> <p>_____</p>

Click here to get the
digital + printable unit.



The Phantom Tollbooth

Digital + Printable Book Unit

Includes
Google Slides

hosted at
boom
wow.boomlearning.com

Created by Gay Miller



Terms of Use

- All rights reserved by Gay Miller.
- This purchase includes a limited license for single classroom use only. You may utilize it for each student you serve.

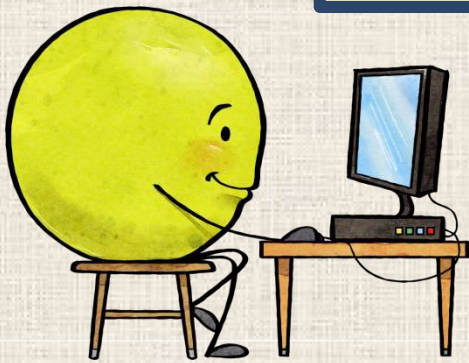
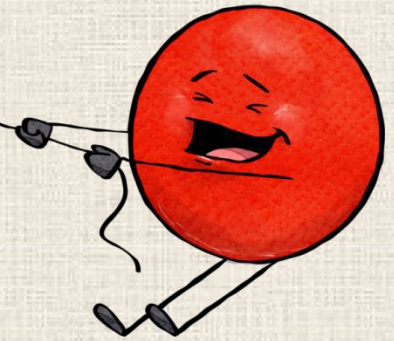
Product Don'ts

- You may not upload this product to the Internet or store it in any public retrieval service of any kind outside of using it with your own students.
- No part of the product may be altered for resell or distribution.
- If you have any questions feel free to contact me at teachwithgaymiller@gmail.com.

Credits



[Pinterest](#)

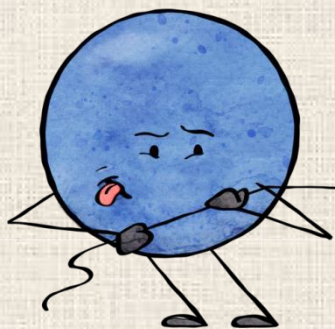


[Book Units Teacher Blog](#)

[Gay Miller's
Teachers Pay Teachers Store](#)



[YouTube](#)



[Book Units Teacher Website](#)



Check out my new [YouTube](#) channel.