

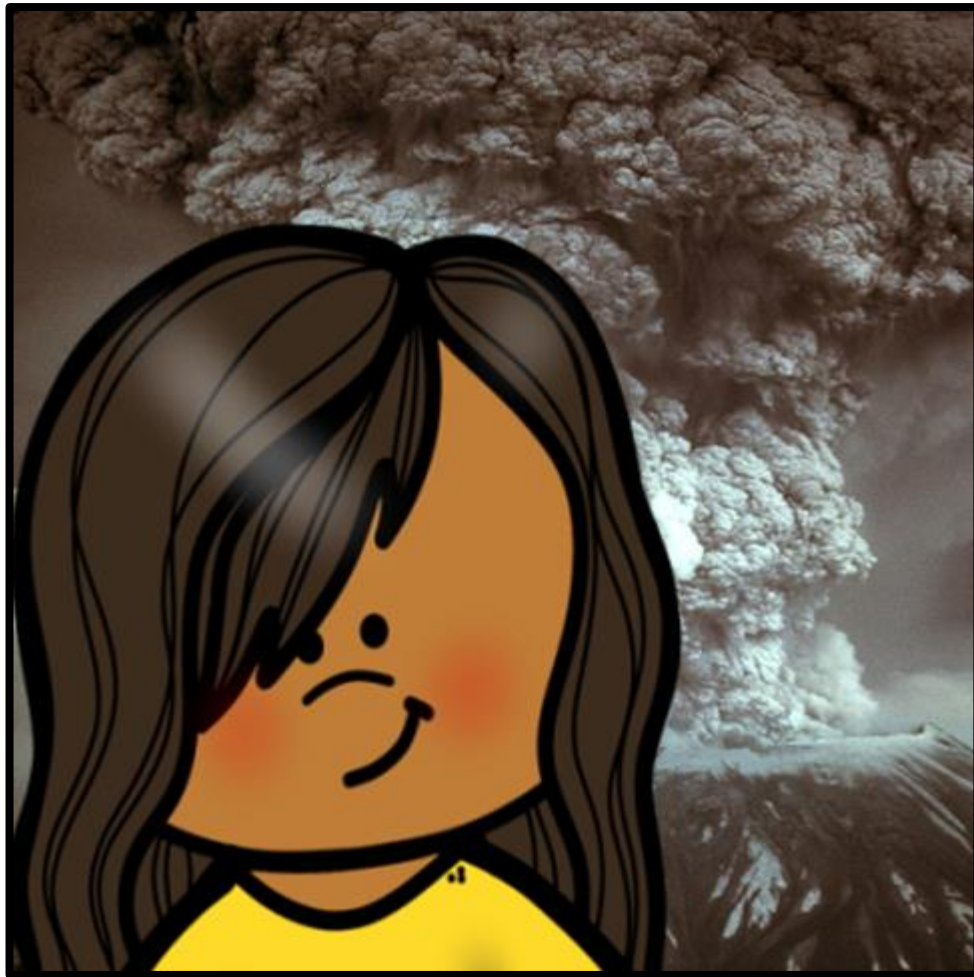
This sample of *I Survived the Eruption of Mount St. Helens, 1980 Book Unit* includes the following:

Table for Contents for the full novel study

Chapters 1-2 Vocabulary Practice

Chapters 1-2 Comprehension Practice

Chapters 1-2 Writing Prompt



You can purchase the unit [here](#).

# Table of Contents

Materials Needed for Creating the Foldable Graphic Organizers	6
<b>Links for Boom Learning Decks</b>	7
<b>Google Digital Link and Information</b>	8
Lesson Plans at a Glance	11
<b>Vocabulary</b>	12
Teacher Information	13
Vocabulary List	16
Vocabulary Bookmarks	19
Vocabulary Word Cards	21
Vocabulary Practice Booklet *	24
Vocabulary Test	43
<b>Comprehension &amp; Writing</b>	45
<a href="#">Boom Decks are provided for the comprehension questions and Google Slides are provided for the Constructive Response questions.</a> )	
Teacher Information/Common Core State Standards	46
Photographs of Mount St. Helens	53
Comprehension Questions for Chapters 1-2	60
Compare and Contrast the Rowan Twins	62
Comprehension Questions for Chapters 3-4	64
Mountain Peaks in the Cascade Range	66
Character Traits	68
Comprehension Questions for Chapters 5-6	70
Course of Action	72
Comprehension Questions for Chapters 7-8	74
Compare and Contrast Eruptions of Mount St. Helens to Mount Pelée	76
Comprehension Questions for Chapters 9-10	78
3D Volcano	80
Summarizing Chapters 9-10	83
Comprehension Questions for Chapters 11-12	85
Figurative Language	87
Comprehension Questions for Chapters 13-14	91

Problem and Solution Chain (Chapters 13-14)	93
Mood	95
Comprehension Questions for Chapters 15-16	97
Cause and Effect (Chapters 15-16)	99
Plot Development Chart	101
<b>Skill Practice</b>	104
Common Core State Standards for Commas	105
Comma Graffiti/Doodle Notes	106
Comma Practice*	113
Common Core State Standards for Prediction /Prediction Organizer*	115
Prediction Practice*	119
Common Core State Standards for Confusing Words/Homophones	123
Confusing Words (to, two, too) Organizer*	124
Confusing Words (to, two, too) Practice*	129
Common Core State Standards for Root Words	131
Root Word (rupt) Organizer*	133
Root Word (rupt) Aggravation Game/Practice	137
Credits	141

---

\* Google Slides provided.

\* Boom Deck provided

## Vocabulary Review

Complete the analogies using a vocabulary word.

1. melted : molten :: practical : \_\_\_\_\_
2. gaping : yawning :: amazement: \_\_\_\_\_
3. hot : scorching :: search : \_\_\_\_\_
4. rock fragments from a volcano : pyroclastic ::  
type of volcanic rock : \_\_\_\_\_
5. beautiful : hideous :: praise : \_\_\_\_\_
6. cloud : plume :: hopefulness : \_\_\_\_\_
7. unrealistic : no-nonsense :: whole : \_\_\_\_\_
8. hot : scorching :: dull and lifeless : \_\_\_\_\_
9. pessimism : optimism :: narrow : \_\_\_\_\_
10. straightforward : no-nonsense ::  
smother : \_\_\_\_\_
11. scold : chide :: revolting : \_\_\_\_\_

## Chapters 1-2 [molten and possession]

1. Is **molten** used correctly in the sentences below?  
True or False

\_\_\_\_\_ Magma is **molten** rock.

\_\_\_\_\_ **Molten** rock is a super cooled liquid.

\_\_\_\_\_ **Molten** lava flowed down the mountain during the eruption.

\_\_\_\_\_ Glassblowing involves inflating **molten** glass into a bubble with a blowpipe.



Read these definitions of **possession**.

- a) something that is owned or possessed by someone
- b) the crime of having something that is illegal (such as a drug or weapon)
- c) a country that is controlled or governed by another country
- d) control of the ball or puck in a game
- e) the state of being controlled by a usually evil spirit

Determine which definition is used in each of the sentences below. Write a, b, c, d, or e in the blanks to show your answer.

2. \_\_\_\_\_ The ghost took **possession** of her body.

3. \_\_\_\_\_ The United States has several **possessions** in the Pacific Ocean.

4. \_\_\_\_\_ My family lost all our **possessions** in the fire.

5. \_\_\_\_\_ He took too long to shoot and lost **possession** of the ball.

6. \_\_\_\_\_ The man was arrested for **possession** of stolen

## Vocabulary Review

Complete the analogies using a vocabulary word.

1. melted : molten :: practical : no-nonsense
2. gaping : yawning :: amazement : astonishment
3. hot : scorching :: search : comb
4. rock fragments from a volcano : pyroclastic ::  
type of volcanic rock : pumice
5. beautiful : hideous :: praise : chide
6. cloud : plume :: hopefulness : optimism
7. unrealistic : no-nonsense :: whole : shred
8. hot : scorching :: dull and lifeless : glaze
9. pessimism : optimism :: narrow : yawning
10. straightforward : no-nonsense ::  
smother : suffocate
11. scold : chide :: revolting : hideous

## Chapters 1-2 [molten and possession]

1. Is molten used correctly in the sentences below?

True or False

  T   Magma is molten rock.

  F   Molten rock is a super cooled liquid.

  T   Molten lava flowed down the mountain during the eruption.

  T   Glassblowing involves inflating molten glass into a bubble with a blowpipe.



Read these definitions of possession.

- a) something that is owned or possessed by someone
- b) the crime of having something that is illegal (such as a drug or weapon)
- c) a country that is controlled or governed by another country
- d) control of the ball or puck in a game
- e) the state of being controlled by a usually evil spirit

Determine which definition is used in each of the sentences below. Write a, b, c, d, or e in the blanks to show your answer.

2.   e   The ghost took possession of her body.

3.   c   The United States has several possessions in the Pacific Ocean.

4.   a   My family lost all our possessions in the fire.

5.   d   He took too long to shoot and lost possession of the ball.

6.   b   The man was arrested for possession of stolen property.

7.   c   Guam became a possession of the US during the Spanish-American War.

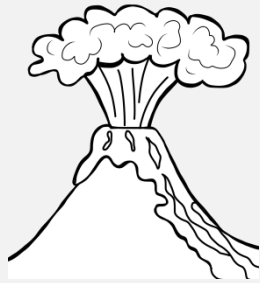
# I Survived the Eruption of Mount St. Helens, 1980 ~ Chapters 1-2

1. The main idea of Chapter 1 is ---.
- An avalanche of rock, mud, and melted ice poured into the valley.
  - Jess and her friends were in the forest near St. Helens when the volcano suddenly erupted.
  - Mount St. Helens erupted suddenly on May 18, 1980.
  - Jess and her best friends, Eddie and Sam, were in the forest near St. Helens.

3. Which **sequencing technique** is used in Chapters 1-2?
- chronology order (time order)
  - logical order (steps in a process)
  - flashback
  - foreshadowing

5. Check all the details that apply to Jess.

- |                                     |   |
|-------------------------------------|---|
| <input type="checkbox"/> girl       | <input type="checkbox"/> 12 years old   |
| <input type="checkbox"/> brown eyes | <input type="checkbox"/> carefree       |
| <input type="checkbox"/> curly hair | <input type="checkbox"/> afraid         |
| <input type="checkbox"/> pale skin  | <input type="checkbox"/> misses her dad |



2. What is the main conflict that Jess is facing in Chapter 2?

- not getting into trouble for taking Dad's camera
- her dad dying
- keeping Mom happy
- getting a photo of Skeleton Woman

4. The story is told from which **point of view**?

- 1<sup>st</sup> person alternating between chapters
- 3<sup>rd</sup> person limited to one person
- 3<sup>rd</sup> person alternating perspectives between chapters
- 2<sup>nd</sup> person as if the reader was in the story

6. Read this passage from Chapter 2.

Within minutes, she'd blabbed to everyone, making it sound like a big joke — with Jess and the twins as the punch line.

Which type of figurative language is used?

- onomatopoeia
- personification
- simile
- hyperbole

What does **punch line** mean in this sentence?

---



---



---

7. Complete the chart to describe the setting of the story.

Time and Place of the Story	<hr/> <hr/> <hr/> <hr/> <hr/> <hr/> <hr/> <hr/> <hr/> <hr/> <hr/> <hr/> <hr/> <hr/> <hr/> <hr/> <hr/> <hr/> <hr/> <hr/> <hr/> <hr/> <hr/> <hr/>	Importance of the Setting	<hr/> <hr/> <hr/> <hr/> <hr/> <hr/> <hr/> <hr/> <hr/> <hr/> <hr/> <hr/> <hr/> <hr/> <hr/> <hr/> <hr/> <hr/> <hr/> <hr/> <hr/> <hr/> <hr/> <hr/>	Mood of the Setting	<hr/> <hr/> <hr/> <hr/> <hr/> <hr/> <hr/> <hr/> <hr/> <hr/> <hr/> <hr/> <hr/> <hr/> <hr/> <hr/> <hr/> <hr/> <hr/> <hr/> <hr/> <hr/> <hr/> <hr/>
-----------------------------	---	---------------------------	---	---------------------	---

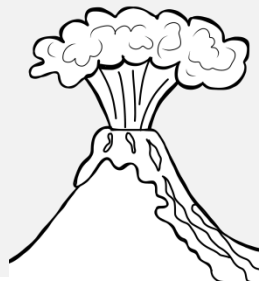
# I Survived the Eruption of Mount St. Helens, 1980 ~ Chapters 1-2 Key

1. The main idea of Chapter 1 is ---.
- An avalanche of rock, mud, and melted ice poured into the valley.
  - Jess and her friends were in the forest near St. Helens when the volcano suddenly erupted.
  - Mount St. Helens erupted suddenly on May 18, 1980.
  - Jess and her best friends, Eddie and Sam, were in the forest near St. Helens.

3. Which **sequencing technique** is used in Chapters 1-2?
- chronology order (time order)
  - logical order (steps in a process)
  - flashback
  - foreshadowing

5. Check all the details that apply to Jess.

- girl                      \_\_\_ 12 years old  
 brown eyes            \_\_\_ carefree  
\_\_\_ curly hair             afraid  
 pale skin                 misses her dad



2. What is the main conflict that Jess is facing in Chapter 2?

- not getting into trouble for taking Dad's camera
- her dad dying
- keeping Mom happy
- getting a photo of Skeleton Woman

4. The story is told from which **point of view**?

- 1<sup>st</sup> person alternating between chapters
- 3<sup>rd</sup> person limited to one person
- 3<sup>rd</sup> person alternating perspectives between chapters
- 2<sup>nd</sup> person as if the reader was in the story

6. Read this passage from Chapter 2.

Within minutes, she'd blabbed to everyone, making it sound like a big joke — with Jess and the twins as the punch line.

Which type of figurative language is used?

- onomatopoeia
- personification
- simile
- hyperbole

What does **punch line** mean in this sentence?

A punch line is the part of the joke that makes everyone laugh. Missy was making fun of Jess and the twins so that others would laugh at them.

7. Complete the chart to describe the setting of the story.

Time and Place of the Story	<p>March 23, 1980          Spirit Lake Memorial Highway</p> <p>&amp;</p> <p>May 18, 1980          Mount St. Helens</p> <p>Both locations are in Washington State.</p>	Importance of the Setting	<p>Mount St. Helens is a volcano that erupted on May 18, 1980. It was one of the deadliest volcanic eruption in American history.</p> <p>The main characters, Jess, Eddie, and Sam, are close enough to the erupting volcano to feel the heat and inhale smoke that feels like fire.</p>	Mood of the Setting	<p>Chapter 1 is frightening. The three friends are caught up in volcanic eruption. Chapter 2 flashbacks to 8 weeks earlier. The friends are joking and laughing as they travel to Loomis Lake.</p> <p>A short backstory explains that the three are going to the lake area to take a picture of Skeleton Woman. Jess is afraid of the witch from the legend. This makes the mood a little tense.</p>
-----------------------------	---	---------------------------	--	---------------------	--

**Compare and Contrast the Rowan Twins**  
 Complete the Venn Diagram to show how Eddie and Sam are alike and different.

**Eddie Rowan**

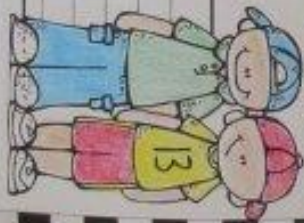
Quiet  
 Serious

**Both**

buzz cut hair, green eyes, freckles  
 twin brothers  
 family owns a red pickup truck which they use to travel to  
 their family's fishing cabin on Loomis Lake in Washington  
 best friends with Jess, have a good sense of humor

**Sam Rowan**

never shuts up  
 fearless



The Rowan twins are both alike and different. The two boys look identical. They buzz cut their hair, have green eyes, and freckles. Both are best friends with Jess. They have a good sense of humor. The boys enjoy going to their family's fishing cabin on Loomis Lake in Washington State.

Even though the boys are alike, they are different in personalities. Eddie is quiet and serious while Sam never shuts up and is fearless.

Copyright © 2008 by The McGraw-Hill Companies, Inc. All rights reserved. This book is intended to be used in conjunction with the curriculum of the state of Washington. It is not to be used as a substitute for any other curriculum. The text of this book is the property of The McGraw-Hill Companies, Inc. All rights reserved. No part of this publication may be reproduced, stored in a retrieval system, or transmitted, in any form or by any means, electronic, mechanical, photocopying, recording, or by any information storage and retrieval system, without the prior written permission of The McGraw-Hill Companies, Inc.



# Compare and Contrast the Rowan Twins

Complete the Venn Diagram to show how Eddie and Sam are alike and different.



Eddie  
Rowan

Handwriting lines for the Eddie Rowan section of the Venn diagram.

Both

Handwriting lines for the Both section of the Venn diagram.

Sam  
Rowan

Handwriting lines for the Sam Rowan section of the Venn diagram.

[CCSS.ELA-Literacy.RL.3.3](#) Describe characters in a story (e.g., their traits, motivations, or feelings) and explain how their actions contribute to the sequence of events

[CCSS.ELA-Literacy.RL.4.3](#) Describe in depth a character, setting, or event in a story or drama, drawing on specific details in the text (e.g., a character's thoughts, words, or actions).

[CCSS.ELA-Literacy.RL.5.3](#) Compare and contrast two or more characters, settings, or events in a story or drama, drawing on specific details in the text (e.g., how characters interact).

# Compare and Contrast the Rowan Twins Answer Key

Complete the Venn Diagram to show how Eddie and Sam are alike and different.



Eddie  
Rowan

quiet  
serious

Both

buzz cut hair, green eyes, freckles  
twin brothers  
family owns a red pickup truck which they use to travel to the fishing cabin on Loomis Lake in Washington  
best friends with Jess  
have a good sense of humor

Sam  
Rowan

never shuts up  
fearless

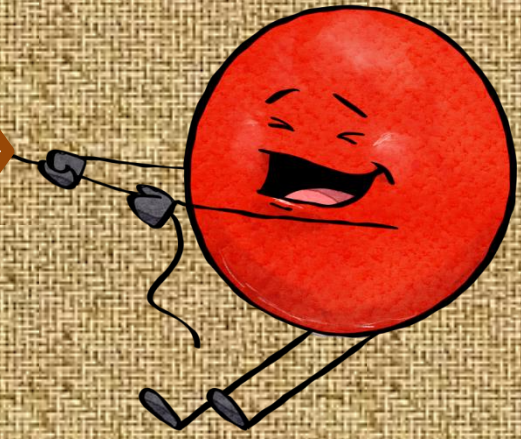
[CCSS.ELA-Literacy.RL.3.3](#) Describe characters in a story (e.g., their traits, motivations, or feelings) and explain how their actions contribute to the sequence of events

[CCSS.ELA-Literacy.RL.4.3](#) Describe in depth a character, setting, or event in a story or drama, drawing on specific details in the text (e.g., a character's thoughts, words, or actions).

[CCSS.ELA-Literacy.RL.5.3](#) Compare and contrast two or more characters, settings, or events in a story or drama, drawing on specific details in the text (e.g., how characters interact).

Visit me on

<http://www.pinterest.com/indagaymiller/>



Teachers Pay  
Teachers

<http://www.teacherspayteachers.com/Store/Gay-Miller>



Visit my website at

<http://bookunitsteacher.com/>