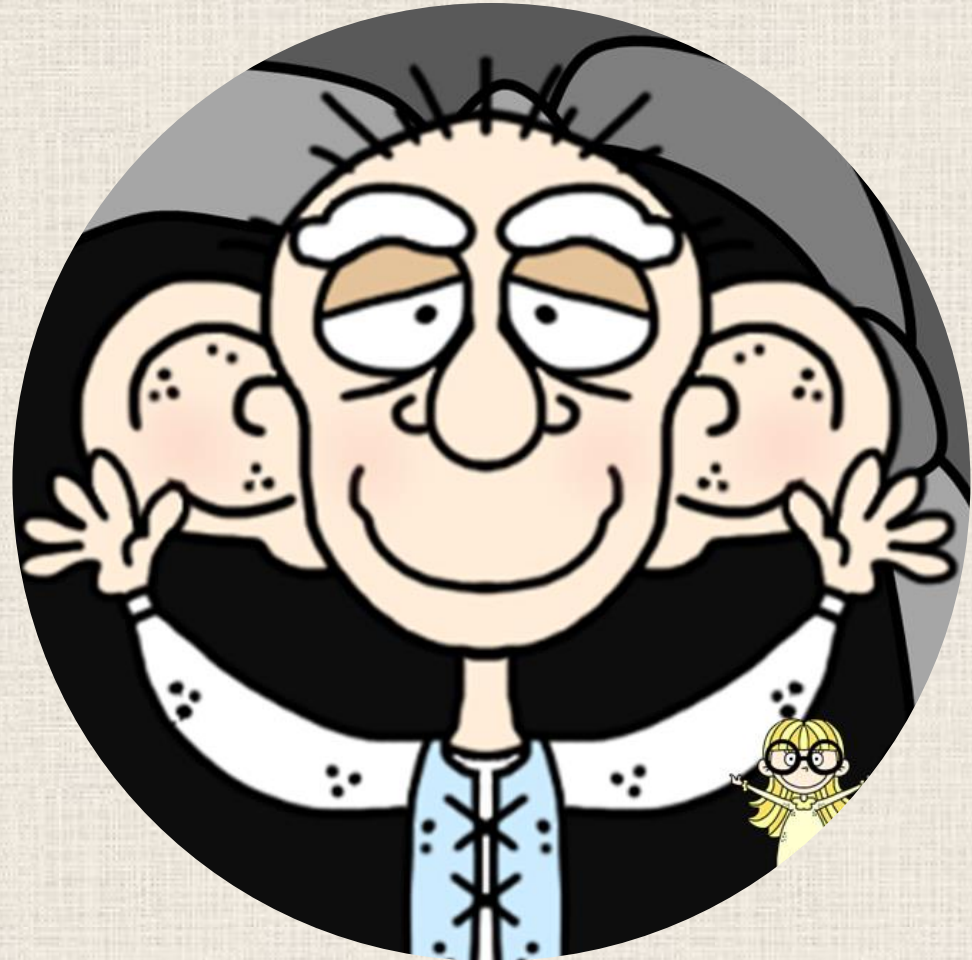
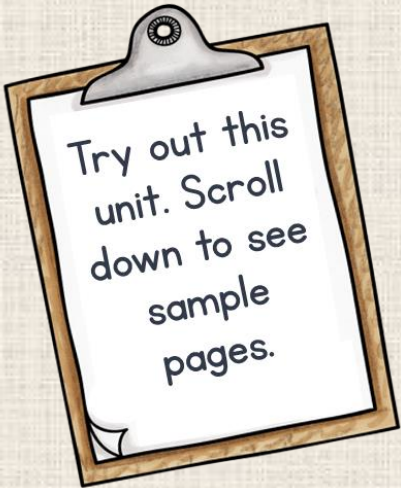


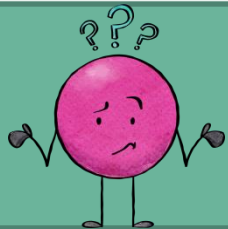
The BFG

Preview



Which version of this unit do I need?

Version	Links to Digital Resources	Vocabulary Practice	Comprehension Questions	Constructed Writing Prompts	Skill Practice
The BFG Digital + Printable	✓	✓	✓	✓	✓
The BFG Printable		✓	✓	✓	✓



On the following pages, you will see snapshot examples for
The BFG Digital + Printable Novel Study.

Be sure to look closely to see which version works best for your needs.



VOCABULARY RESOURCES

VOCABULARY BOOKMARKS

The image shows a collection of educational materials for the story 'The BFG'. It includes several pages of word lists with definitions and sample sentences. A central cartoon illustration depicts a young girl with glasses reading a book, with a large heart behind her head containing the words 'Vocabulary' and 'Resources'. The word lists are organized into chapters, such as 'Chapter 1: The Giant', 'Chapter 2: The Giant's Breakfast', and 'Chapter 3: The Giant's Dinner'.

WORD LIST
Students practice with two focus words for each reading selection. A wordlist with definitions, synonyms, and sample sentences from the story is included.

This section displays several 'Vocabulary Bookmarks' for 'The BFG'. Each bookmark features a colorful illustration of a character from the story (like Sophie or the BFG) and a list of vocabulary words with their definitions. The bookmarks are designed to be placed in a student's book for easy reference.

WORD CARDS

A grid of word cards containing the following words: lavatory, spurt, sprint, swivel, contemptuous, brute, gruesome, revulsion, nettle, laborious, menace, famished, fiasco, ingenuity, illusion, guzzle, efficient, contrivance, and literally. A blue arrow points from the 'spurt' card towards the 'PRACTICE BOOK' section.

PRACTICE BOOK

The practice book page is titled 'The BFG' and features a cartoon illustration of Sophie. It contains two sections of exercises:

1. Circle six words in the box that are synonyms of *lavatory*.

bathroom	dressing	groin
comb	restroom	powder room
tidy	toilet	washroom
sprucing up	primping	john

2. Is *spurt* used correctly in the sentences below? True or False?

_____ The runner **spurted** to the finish line.
 _____ The boy was **spurted** away from the ongoing car.
 _____ With a **spurt** of energy, I finished all my chores in record time.

3. Circle six words in the box that are synonyms of *spurt*.

burst	guzzle	slither
leaze	rush	increase
jet	surge	lag
loaf	dilly-dally	spring out

Page 1

TEST WITH ANSWER KEY

The test page is titled 'Vocabulary Test' and includes a matching exercise. Students are asked to match a definition with its vocabulary word by placing the correct letter in the box of the word.

Matching - Match each definition with its vocabulary word by placing the correct letter in the box of the word.

1. _____ **emerge** a) extremely large in size, magnitude, or effect

2. _____ **gruesome** b) to have a small or slight

3. _____ **lavatory** c) a small or slight

4. _____ **contaminations** d) of sound (resound)

5. _____ **menace** e) to turn on

6. _____ **spit** f) to turn on

7. _____ **urginals** g) that which

8. _____ **boabe** h) a room

9. _____ **unwieldable** i) marked by mass effect

10. _____ **swell** j) lightness

11. _____ **colossal** k) feeding or

12. _____ **revel** l) to run on

13. _____ **beige** m) used for acid

14. _____ **boon** n) requiring considerable effort or perseverance

15. _____ **verber** o) operating or working in a way that puts results with little wasted effort

16. _____ **gentle** p) very hungry

17. _____ **blissfully** q) in utter and shameful failure

18. _____ **libations** r) to appear or come into view often as a very large, dim, or faded shape

19. _____ **fascia** s) the quality of or an instance of being ingenious; cleverness

20. _____ **continence** t) to consume greedily, often, or abundantly

21. _____ **hambambud** u) infatigable or invincible (someone)

22. _____ **bluish** v) a trace of color (iv)

23. _____ **legislate** w) to oppose or come into view often as a very large, dim, or faded shape

24. _____ **effulcent** x) that which has been engineered, such as a mechanical device, invention, or scheme

DIGITAL VOCABULARY

Digital vocabulary practice is provided through Boom Learning Decks.



Chapters 1-2 (lavatory and spurt)

1. Circle six words in the box that are synonyms of **lavatory**.

bathroom	dressing	groom
comb	restroom	powder room
tidy	toilet	washroom
sprucing up	priming	john

2. Is **spurt** used correctly in the sentences below? True or False

_____ The runner **spurred** to the finish line.

_____ The boy was **spurred** away from the ongoing car.

_____ With a **spurt** of energy, I finished all my chores in record time.


3. Circle six words in the box that are synonyms of **spurt**.

burst	dawdle	slither
laze	rush	increase
jet	surge	lag
loaf	dilly-dally	spring out

Page 1

Is **spurt** used correctly in this sentence?

With a **spurt** of energy, I finished all my chores in record time.



NO

YES

12 COMPREHENSION CHECKS

The BFG ~ Chapter 1-2 ~ The Witching Hour & Who?

1. Based on clues provided in the chapter, Sophie most likely lives ---. a. with her grandparents b. in an orphanage c. over her parents' grocery store d. out in the country in a cottage	2. List the clues you used to answer question #1. _____ _____ _____
3. The main idea of Chapters 1-2 is ---. a. Sophie has a difficult time sleeping. b. Sophie lives in a home with strict rules. c. Sophie gets out of bed in the middle of the night. d. Sophie "meets" the giant.	4. The most frightening part of Chapters 1-2 was ---. _____ _____

The BFG ~ Chapter 1-2 ~ The Witching Hour & Who?

1. Based on clues provided in the chapter, Sophie most likely lives ---. a) with her grandparents b) in an orphanage c) over her parents' grocery store d) out in the country in a cottage	2. List the clues you used to answer question #1. <ul style="list-style-type: none">The other children in the dormitory had been asleep for hours.You got punished if you were caught out of bed after lights-out. Even if you said you had to go to the lavatory...
3. The main idea of Chapters 1-2 is ---. a) Sophie has a difficult time sleeping. b) Sophie lives in a home with strict rules. c) Sophie gets out of bed in the middle of the night. d) Sophie "meets" the giant.	4. The most frightening part of Chapters 1-2 was ---. Answers will vary. Most likely the most frightening part is when Sophie was taken from her bed.

5. Read the following passage from Chapter 1.
The moonbeam was like a silver blade slicing through the room on to her face.
Which type of figurative language is used? _____
What does the sentence mean? _____

6. Draw a picture that shows what the giant was doing in Chapter 2.

Page | 65 Unit 1

Explain your drawing.

He bent over and opened the suitcase. He took something out of it. It looked like a glass jar, one of those square ones with a screw top. He unscrewed the top of the jar and poured what was in it into the end of the long trumpet thing. . . . she saw him poke the trumpet in through the open upstairs window of the room where the Goochey children were sleeping. She saw the Giant take a deep breath and whoof, he blew through the trumpet.

Page | 100 Unit Created by Gay Miller

Based on clues provided in the chapter, Sophie most likely lives ---.

in an orphanage

out in the country in a cottage

over her parents' grocery store

with her grandparents



Great resource, so much for students to do during this book study. It also has great digital resources and love the boomcards!

-Kiki's Little Learners



WOW! The absolute best designer of book companions that I have found anywhere! I now own 5 of your novel units and I couldn't say enough positive things about them! If you need a teaching tool...grab this one! Well done!!!!!!

-Holly



I used this as my novel study resource. Very thorough and engaging for the kids. The Boomcards activities are great for independent work.

-Michelle



This is a great unit book study. I used this with my own kiddo at home and later used it in my class. It is very engaging and covers a lot of content.

-Renee



My students love this unit. The vocabulary is fun and often leads to some great classroom discussion. The skill sets are wonderful review of learned skills and fabulous for learning new skills.

-Kathy



My students loved this book and didn't even mind doing some work while reading! :) Great resource to use as a guide and for some assessing while reading.

-Elizabeth



Excellent book companion. I really enjoyed the variety of organizers and I feel like my students had fun while showing their learning.

- Pineapples and Paradise

18 CONSTRUCTED WRITING PROMPTS

Constructed Response - Character Traits
Draw a picture of the giant based on details in *The BFG*.

Proof from Text	Picture of the Giant	Proof from Text
Proof from Text		Proof from Text
Proof from Text		Proof from Text

CCSS.L.4.W.1.3 Describe characters in a story (e.g., their traits, motivations, and conflicts) and explain how these contribute to what happens in the story.
CCSS.L.4.W.1.4 Compare and contrast two or more subjects (e.g., topics, issues, events, characters, settings, ideas) or two or more media (e.g., stories, films, animated media).

Full Page Answer Keys

Constructed Response - Character Traits
Draw a picture of the giant based on details in *The BFG*.

Proof from Text Chapter 2 enormous long pale wrinkly face with the most enormous ears	Picture of the Giant	Proof from Text Chapter 2 nose was as sharp as a knife, and above the nose there were two bright flashing eyes
Proof from Text Chapter 3 arm as thick as a tree-trunk		Proof from Text Chapter 2 so tall its head was higher than the upstairs windows of the houses
Proof from Text Chapter 4 wearing a sort of collarless and a dirty old leather waist that didn't seem to have buttons		Proof from Text Chapter 4 trousers were faded green and

CCSS.L.4.W.1.3 Describe characters in a story (e.g., their traits, motivations, and conflicts) and explain how these contribute to what happens in the story.
CCSS.L.4.W.1.4 Compare and contrast two or more subjects (e.g., topics, issues, events, characters, settings, ideas) or two or more media (e.g., stories, films, animated media).

Constructed Response - Character Traits
Draw a picture of the giant based on details in *The BFG*.

Proof from Text	Picture of the Giant	Proof from Text
Proof from Text		Proof from Text
Proof from Text		Proof from Text

CCSS.L.4.W.1.3 Describe characters in a story (e.g., their traits, motivations, and conflicts) and explain how these contribute to what happens in the story.
CCSS.L.4.W.1.4 Compare and contrast two or more subjects (e.g., topics, issues, events, characters, settings, ideas) or two or more media (e.g., stories, films, animated media).

Page 1.35 One Created by Gay Miller

with and without CCSS

Constructed Response - Character Traits
Type details of the giant.

Proof from Text	Picture of the BFG	Proof from Text
Proof from Text		Proof from Text
Proof from Text		Proof from Text

© Gay Miller

SAMPLE SKILL LESSON

Bump Games

Literary Devices Bump

- The Giant is running fast, she told herself, because he is hungry and he wants to go home as quickly as possible, and then he'll have me for breakfast.
- The BFG is the main character in the story. He is the "good guy" who the reader feels a connection to.
- The writer's attitude toward the story is a mix of whimsical fantasy, heartfelt sentiment, and creeping eeriness.
- "What has so got here?" His booming voice rolled around the walls of the cave like a burst of thunder.
- "Two rights don't equal a left" [Two wrongs don't make a right]
- whizzpopper lickwicky snozzycumbers frobscottle frogglehumper
- The orange glow from the night-sky over London crept into the room and cast a glimmer of light on its walls.
- Hold your horses! meaning Hold your horses.
- I is bitten by a septicosis venomous vindscreen viper!
- The story is told through a narrator who lets the reader know how Sophie and the BFG are feeling.
- The Air Marshal's face turned the color of a ripe plum.

alliteration

protagonist

Third Person Point of View Omniscient

idiom

personification

made up words

verb

simile

foreshadowing of seeing the human-eating giants

tone

© Gay Miller

Symbols and Objects Bump

- This powerful lady can control the army and navy.
- This book helps the BFG learn words. "I is reading it hundreds of times," the BFG said. "And I is still reading it and teaching new words to myself and how to write them. It is the most scrambly/unpleasant story."
- I've got it! By golly, I think I've got it!
- This is the time of night when creatures such as witches, ghosts, and such are thought to appear and to be at their most powerful.
- This is the BFG's way of surviving without eating humans.
- The BFG catches dreams using this object and places them into jars.
- The BFG stores dreams in these. He takes them out and packs them in his suitcase for delivery.
- The BFG sends out pleasant dreams to boys and girls using this object.
- This bubbly drink is super delicious even if it causes Whizzpopper.
- The BFG can hear the sounds of dreams. These objects allow him to know if they are good dreams or nightmares.
- These are symbols of a happily ever after ending to the story.

frobscottle

novels by Charles Dickens

The Queen of England

snozzycumbers

My Lady

big ears

dream jars

a huge castle for the BFG and a little cottage next door for Sophie

butterfly net

The BFG

© Gay Miller

Character Bump

- He is the leader of the giants. He is two feet taller than the BFG and "the horriest of them all."
- He has supreme command of all the palace servants. This man is extremely gifted and is able to build a giant-sized table and chair for the BFG out of pieces of furniture in the palace.
- She is the cruel director of the orphanage.
- This giant goes inside the BFG's cave when he is not home. The BFG convinces him to eat a snozzycumber which he finds revolting. He prefers eating English school children.
- This giant is a city lover. He is selective with his meals. He lies on the roofs of houses and grabs people who look appealing as they walk on the street below him.
- He is the Queen of England's chief cook. He is able to cook up a breakfast of eggs, bacon, and toast for the BFG.
- She is a nice orphan who lives in England. She wears big glasses and has blonde hair. She is carried away to Giant Country after she sees the BFG.
- This giant pretends to be a big tree growing in the park. He stands at dusk holding great big branches over his head. He is waiting until some happy family comes along for "dinner."
- This man leads a group of soldiers on a capture mission to Giant Country. He figures out Giant Country is located off the atlas.
- He is the smallest of all the giants in Giant Country. He is the kindest and survives by eating snozzycumbers and frobscottle. His big ears help him capture dreams.
- She is a powerful lady who helps stop the giants from taking children from their beds.

Gizzardgulper

The BFG

Sophie

Head of the Air Force

Fleshlumpeater

Queen of England

Monsieur Papillon

Meatdrripper

Mrs. Clonkers

Mr. Tibbs

The Bloodbottler


© Gay Miller

Google Slide Activity

Prefix and Suffix Practice

Prefix List from The BFG

non- nonsense	over- overcome overlapping overhead	mis- mistake
de- decided/ decisive describe depend delicious defending deliver determined deserted demanded	under- underneath understand	



Page | 129 Unit Created by Gay Miller

	1) Nice dreams. Lovely _____ dreams. Dreams that is giving the dreamers a happy time.	gold en	1) Nice dreams. Lovely _____ dreams. Dreams that is giving the dreamers a happy time.
	2) The moonbeam was brighter than ever on Sophie's pillow. She _____ to get out of bed and close the gap in the curtains.	de cided	2) The moonbeam was brighter than ever on Sophie's pillow. She _____ to get out of bed and close the gap in the curtains.
	3) And sometimes human beans is very _____ when they is hearing wondrous music.	over come	3) And sometimes human beans is very _____ when they is hearing wondrous music.
	4) "What's that you've got in there?" the Head of the Army _____ to know.	de manded	4) "What's that you've got in there?" the Head of the Army _____ to know.
	5) She was terrified she might sneeze. The slightest sound or _____ would give her away.	move ment	5) She was terrified she might sneeze. The slightest sound or _____ would give her away.
Puzzle Pieces ment move de manded		Puzzle Pieces	

© Gay Miller

Draggable Puzzle Pieces

What are Boom Cards?

Boom Cards are digital task cards that students play on the Boom Learning Website.

They...

- ✓ are fully digital – require no printing, paper, ink, etc.
- ✓ may be used on all modern browsers
- ✓ are played on devices connected to the Internet
- ✓ can be used for student practice at no cost to you

When you purchase this novel study from TPT, you will receive special links to these Boom Cards. When you click on one of these links, you will be asked to sign into your account or create a free account at the Boom Learning Website. The special links in the paid resource let the Boom Learning site know you have purchased the deck. When you click the link, Boom Learning sends the Boom Deck to your Boom Library, so your students can access them. Students can play for free or data will be tracked for you with the Boom Learning Paid Subscription.

[Click here](#) for a playable preview on Boom Learning.

Drag the synonyms of **lavatory** to the synonym box and the words that do not mean **lavatory** to the other box.

Synonyms

Not a Synonym

restroom

groom

powder room

bathroom

comb

dressing

Which clue provides the best information for determining where Sophie lives?

Sophie closed her eyes and lay quite still. She tried very hard to doze off.

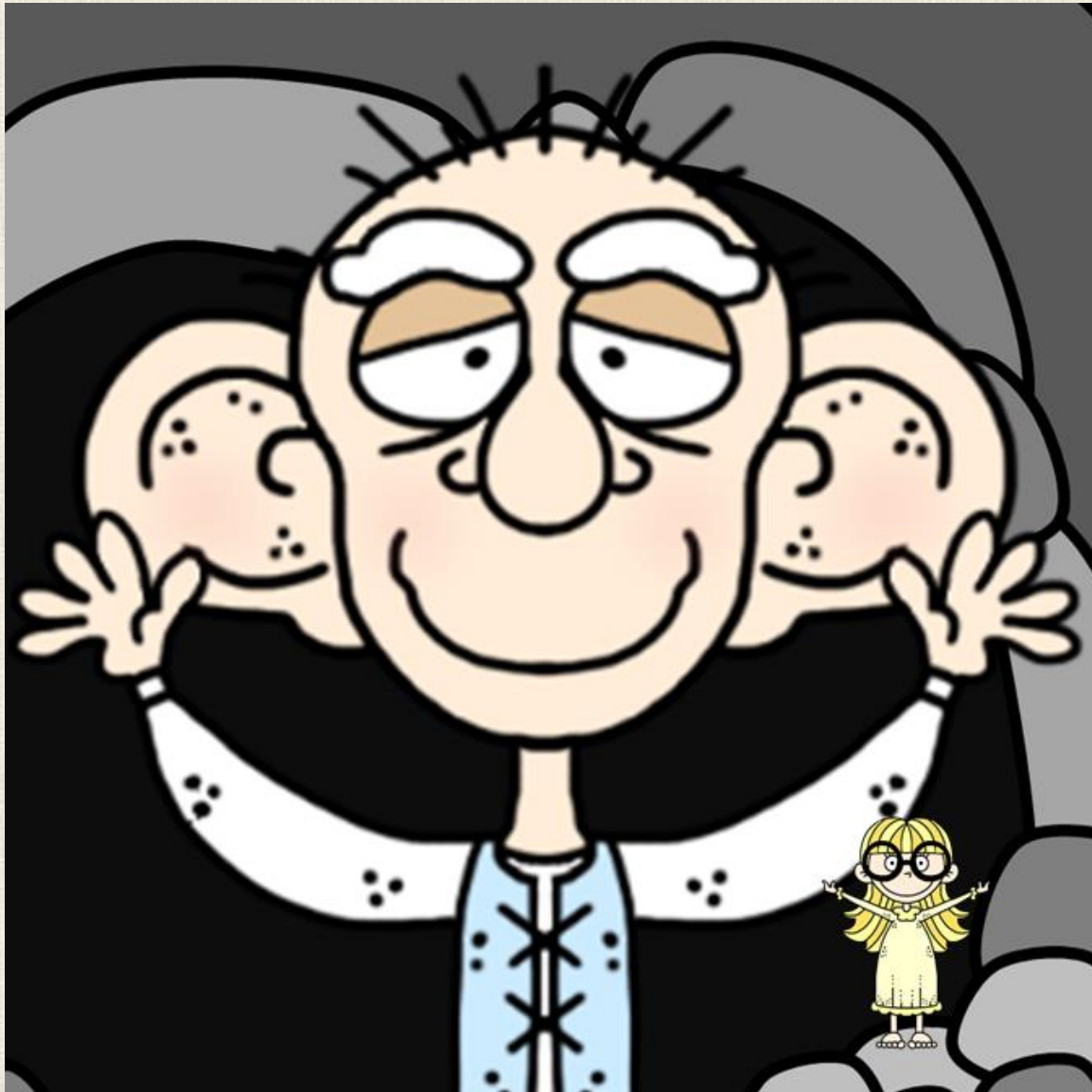
The longing to look out became so strong she couldn't resist it. Quickly, she ducked under the curtains and leaned out of the window.

Across the road, she could see Mrs Rance's shop, where you bought buttons and wool and bits of elastic. It didn't look real.

The other children in the dormitory had been asleep for hours.

The BFG

Novel Study Samples



Created by Gay Miller





**Thank you for
downloading this novel
study sample.**

**On the next pages, you will find the following pages
from the unit including:**

- **Table of Contents for the Digital + Printable Version**
- **Lesson Plans at a Glance for the Full Unit**

FREE SAMPLE PAGES

**The First Reading Selection plus Answer Keys
(These pages are found in all versions of this unit.)**

- **Vocabulary Practice**
- **Comprehension Questions**
- **Constructed Response Writing Prompt
(with and without the Common Core
Standards)**



**Are you wondering what other novel
studies I have available? You can see
the complete list [here](#).**

Table of Contents

Lesson Plans at a Glance	5
SECTION #1 - Links to Digital Resources	6
Materials Needed	12
SECTION #2 - Vocabulary	13
Teacher Information	14
Vocabulary List	17
Vocabulary Bookmarks	25
Vocabulary Word Cards	27
Vocabulary Practice Booklet	31
Answer Keys for Vocabulary	45
Vocabulary Test	54
Teacher Information	58
SECTION #3 - Student Packet for Comprehension and Writing	64
Comprehension Chapters 1-2	65
Constructed Response – Character Traits	66
Comprehension Chapters 3-4	67
Constructed Response - Setting	68
Comprehension Chapters 5-6	69
Constructed Response - Puns	70
Constructed Response – Cause and Effect	71
Comprehension Chapters 7-8	72
Constructed Response – Point of View	73
Comprehension Chapters 9-10	75
Constructed Response – Characters	76
Comprehension Chapters 11-12	77
Constructed Response – Problem and Solution Chain	78
Comprehension Chapters 13-14	79
Constructed Response - Summarizing	80
Constructed Response – Contrasting Events	81
Comprehension Chapters 15-16	82
Famous Sayings ~ Changes by Roald Dahl	83

Comprehension Chapters 17-18	84
Constructed Response – Mood	85
Comprehension Chapters 19-20	86
Constructed Response – Character Traits	87
Comprehension Chapters 21-22	89
Constructed Response – Figurative Language	90
Constructed Response – The Giants	92
Comprehension Chapters 23-24	94
Constructed Response – Theme	95
Constructed Response – Summarizing	96
Plot Development Chart	97
Constructed Response – Comparing the Book to the Movie	98
SECTION #4 - Answer Keys for Comprehension and Constructed Response Writing Questions	99
SECTION #5 - Student Packet without Teaching Standards	134
SECTION #6 - Skills	169
Prefixes, Suffixes, Root Word Common Core Alignment	170
Prefixes and Suffixes Word Lists and Organizers	171
Prefix and Suffix Puzzles	186
Root Word Lists	195
Root Word Organizers	198
Italics Organizer	202
Italics Cards	205
Dream Writing Activity	209
Would You Rather Writing Activity	213
Figurative Language Common Core Alignment	216
Figurative Language Response Cards	217
Figurative Language Organizers	223
Context Clues Common Core Alignment	233
Context Clues Organizers	234
Context Clues Task Cards	244
BONUS ~ Three Bump Games	251
Credits	262

Lesson Plans at a Glance

Read	Vocabulary Words and Practice Book		Comprehension Practice	Constructed Response Question	Skill Practice
Chapter 1-2	lavatory spurt	Page 1	Chapters 1-2	Character Traits of the BFG	Prefix Organizers
Chapters 3-4	sprint craggy	Page 2	Chapters 3-4	Setting	Suffix Organizers
Chapters 5-6	brute colossal	Page 3	Chapters 5-6	Chapter 5 – Puns Chapter 6 – Cause and Effect	Prefix and Suffix Puzzles
Chapters 7-8	swivel contemptuous	Page 4	Chapters 7-8	Point of View	Root Word Organizers
Chapters 9-10	gruesome reverberate	Pages 5	Chapters 9-10	Chapter 9 – Comparing Characters ~ BFG to Bloodbottler	Italics Organizer
Chapters 11-12	menace anguish	Pages 6-7	Chapters 11-12	Chapters 11-12 ~ Problem and Solution Chain	Italics Discussion Cards
Chapters 13-14	nettle laborious	Page 8	Chapters 13-14	Chapter 13 ~ Summarizing Chapter 14 Contrasting Events	Writing Activity - Dreams
Chapters 15-16	famished tinge	Page 9	Chapters 15-16	Chapter 15 ~ Figurative Language	Figurative Language Organizers
Chapters 17-18	illusion loom	Page 10	Chapters 17-18	Chapter 17-18 – Mood	Figurative Language Response Cards
Chapters 19-20	fiasco ingenuity	Page 11	Chapters 19-20	Chapter 20 – Character Traits – Mr. Tibbs	Writing Activity – Would You Rather
Chapters 21-22	guzzle efficient	Page 12	Chapters 21-22	Chapter 21-22 ~ Figurative Language [2 Choices]	Context Clues Organizer
Chapters 23-24	contrivance literally	Pages 13	Chapters 23-24	Character Traits – The 9 Giants	Context Clues Tasks Cards
	Review	Pages 14-16		Full Book – Theme Summarizing	
	Vocabulary Test			Full Book – Plot Development Chart Comparing the Book to the Movie	

Vocabulary Review

Write a synonym for each word listed:

1. spurt _____

2. craggy _____

3. brute _____

4. nettle _____

5. famished _____

6. illusion _____

7. anguish _____

8. ingenuity _____

9. loom _____

10. colossal _____

Chapters 1-2 [lavatory and spurt]

1. Circle six words in the box that are synonyms of **lavatory**.

bathroom	dressing	groom
comb	restroom	powder room
tidy	toilet	washroom
sprucing up	primping	john



2. Is **spurt** used correctly in the sentences below?
True or False

_____ The runner **spurted** to the finish line.

_____ The boy was **spurted** away from the ongoing car.

_____ With a **spurt** of energy, I finished all my chores in record time.



3. Circle six words in the box that are synonyms of **spurt**.

burst	dawdle	slither
laze	rush	increase
jet	surge	lag
loaf	dilly-dally	spring out

Vocabulary Review

Write a synonym for each word listed: **Answers will vary.**

1. spurt burst

2. craggy rocky

3. brute bully

4. nettle pester

5. famished hungry

6. illusion fantasy

7. anguish suffering

8. ingenuity inventiveness

9. loom appear

10. colossal gigantic

Chapters 1-2 [lavatory and spurt]

1. Circle six words in the box that are synonyms of **lavatory**.

bathroom	dressing	groom
comb	restroom	powder room
tidy	toilet	washroom
sprucing up	priming	john



2. Is **spurt** used correctly in the sentences below?
True or False

T The runner **spurted** to the finish line.

F The boy was **spurted** away from the ongoing car.

T With a **spurt** of energy, I finished all my chores in record time.



3. Circle six words in the box that are synonyms of **spurt**.

burst	dawdle	slither
laze	rush	increase
jet	surge	lag
loaf	dilly-dally	spring out

The BFG ~ Chapter 1-2 ~ The Witching Hour & Who?

<p>1. Based on clues provided in the chapter, Sophie most likely lives ---.</p> <ul style="list-style-type: none">a. with her grandparentsb. in an orphanagec. over her parents' grocery stored. out in the country in a cottage	<p>2. List the clues you used to answer question #1.</p> <p>_____</p> <p>_____</p> <p>_____</p> <p>_____</p>
<p>3. The main idea of Chapters 1-2 is ---.</p> <ul style="list-style-type: none">a. Sophie has a difficult time sleeping.b. Sophie lives in a home with strict rules.c. Sophie gets out of bed in the middle of the night.d. Sophie "meets" the giant.	<p>4. The most frightening part of Chapters 1-2 was ---.</p> <p>_____</p> <p>_____</p> <p>_____</p> <p>_____</p>

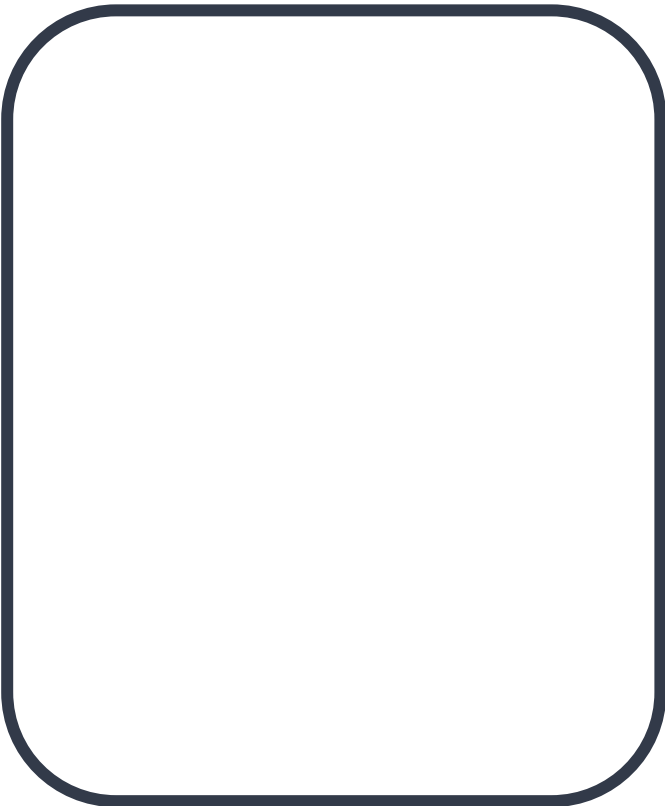
5. Read the following passage from Chapter 1.

The moonbeam was like a silver blade slicing through the room on to her face.

Which type of figurative language is used? _____

What does the sentence mean?

6. Draw a picture that shows what the giant was doing in Chapter 2.



Explain your drawing.

Constructed Response - Character Traits

Draw a picture of the giant based on details in *The BFG*.

Picture of the Giant

Proof from Text

Proof from Text

Proof from Text

Proof from Text

Proof from Text

Proof from Text

CCSS.ELA-Literacy.RL.3.3

Describe characters in a story (e.g., their traits, motivations, or feelings) and explain how their actions contribute to the sequence of events

CCSS.ELA-Literacy.RL.4.3 Describe in depth a character, setting, or event in a story or drama, drawing on specific details in the text (e.g., a character's thoughts, words, or actions).

CCSS.ELA-Literacy.RL.5.3 Compare and contrast two or more characters, settings, or events in a story or drama, drawing on specific details in the text (e.g., how characters interact).

The BFG ~ Chapter 1-2 ~ The Witching Hour & Who?

<p>1. Based on clues provided in the chapter, Sophie most likely lives ---.</p> <ul style="list-style-type: none">a) with her grandparentsb) in an orphanagec) over her parents' grocery stored) out in the country in a cottage	<p>2. List the clues you used to answer question #1.</p> <ul style="list-style-type: none">• The other children in the dormitory had been asleep for hours.• You got punished if you were caught out of bed after lights-out. Even if you said you had to go to the lavatory. . .
<p>3. The main idea of Chapters 1-2 is ---.</p> <ul style="list-style-type: none">a) Sophie has a difficult time sleeping.b) Sophie lives in a home with strict rules.c) Sophie gets out of bed in the middle of the night.d) Sophie "meets" the giant.	<p>4. The most frightening part of Chapters 1-2 was ---.</p> <p>Answers will vary. Most likely the most frightening part is when Sophie was taken from her bed.</p>

5. Read the following passage from Chapter 1.

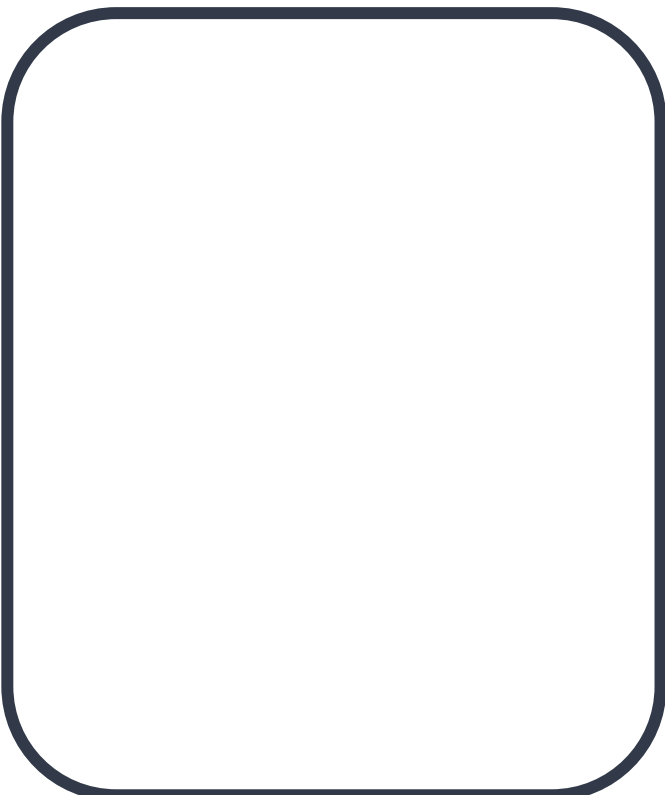
The moonbeam was like a silver blade slicing through the room on to her face.

Which type of figurative language is used? simile

What does the sentence mean?

The moon was shining brightly into Sophie's room. The light was shining directly on Sophie's face.

6. Draw a picture that shows what the giant was doing in Chapter 2.



Explain your drawing.

He bent over and opened the suitcase. He took something out of it. It looked like a glass jar, one of those square ones with a screw top. He unscrewed the top of the jar and poured what was in it into the end of the long trumpet thing. . . . she saw him poke the trumpet in through the open upstairs window of the room where the Goochey children were sleeping. She saw the Giant take a deep breath and whoof, he blew through the trumpet.

Constructed Response - Character Traits

Draw a picture of the giant based on details in *The BFG*.

Proof from Text

Chapter 2

enormous long pale wrinkly face
with the most enormous ears

Proof from Text

Chapter 3

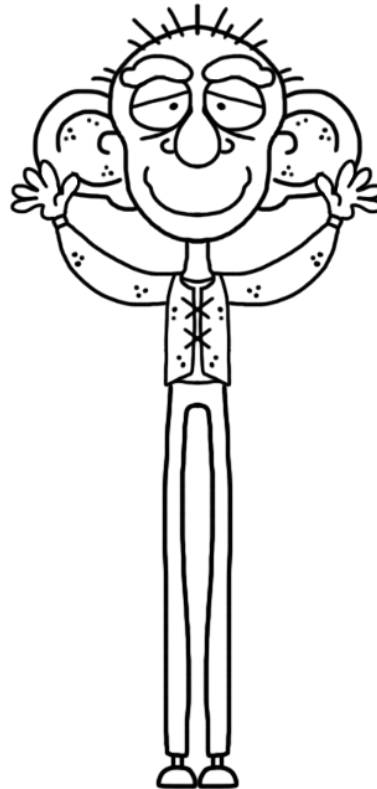
arm as thick as a tree-trunk

Proof from Text

Chapter 4

wearing a sort of collarless shirt
and a dirty old leather waistcoat
that didn't seem to have any
buttons

Picture of the Giant



Proof from Text

Chapter 2

nose was as sharp as a knife, and
above the nose there were two
bright flashing eyes

Proof from Text

Chapter 2

so tall its head was higher than the
upstairs windows of the houses

Proof from Text

Chapter 4

trousers were faded green and
were far too short in the legs. On
his bare feet he was wearing a
pair of ridiculous sandals that for
some reason had holes cut along
each side, with a large hole at the
end where his toes stuck out

[CCSS.ELA-Literacy.RL.3.3](#)

Describe characters in a story (e.g., their traits, motivations, or feelings) and explain how their actions contribute to the sequence of events

[CCSS.ELA-Literacy.RL.4.3](#)

Describe in depth a character, setting, or event in a story or drama, drawing on specific details in the text (e.g., a character's thoughts, words, or actions).

[CCSS.ELA-Literacy.RL.5.3](#)

Compare and contrast two or more characters, settings, or events in a story or drama, drawing on specific details in the text (e.g., how

Addendum

Constructed Response Questions without Common Core State Standards



Important Update

Originally 46 states adopted the Common Core State Standards. Many teachers have commented that they love having the standards on pages with constructed response writing prompts for accountability reasons. Now educational trends are changing. Many states have repealed Common Core and adopted their own state standards. To meet the needs of teachers both using and not using Common Core Standards, I have opted to provide the writing questions both with and without standards.

To make creating a printable student packet easier, the comprehension and constructed response questions are both included in this section.

The BFG ~ Chapter 1-2 ~ The Witching Hour & Who?

<p>1. Based on clues provided in the chapter, Sophie most likely lives ---.</p> <ul style="list-style-type: none">a) with her grandparentsb) in an orphanagec) over her parents' grocery stored) out in the country in a cottage	<p>2. List the clues you used to answer question #1.</p> <p>_____</p> <p>_____</p> <p>_____</p> <p>_____</p>
<p>3. The main idea of Chapters 1-2 is ---.</p> <ul style="list-style-type: none">a) Sophie has a difficult time sleeping.b) Sophie lives in a home with strict rules.c) Sophie gets out of bed in the middle of the night.d) Sophie "meets" the giant.	<p>4. The most frightening part of Chapters 1-2 was ---.</p> <p>_____</p> <p>_____</p> <p>_____</p> <p>_____</p>

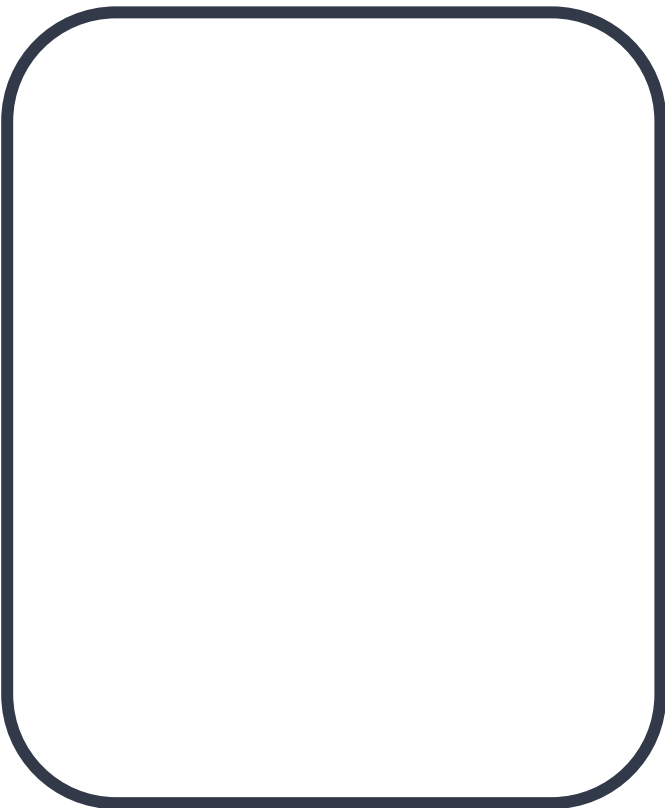
5. Read the following passage from Chapter 1.

The moonbeam was like a silver blade slicing through the room on to her face.

Which type of figurative language is used? _____

What does the sentence mean?

6. Draw a picture that shows what the giant was doing in Chapter 2.



Explain your drawing.

Constructed Response - Character Traits

Draw a picture of the giant based on details in *The BFG*.

Proof from Text

Picture of the Giant

Proof from Text

Proof from Text

Proof from Text

Proof from Text

Proof from Text

Click here to get the
digital + printable unit.



The BFG
Digital + Printable Book Unit

Includes
Google Slides

hosted at
boom
www.boomlearning.com

Created by Gay Miller



Terms of Use

- All rights reserved by Gay Miller.
- This purchase includes a limited license for single classroom use only. You may utilize it for each student you serve.

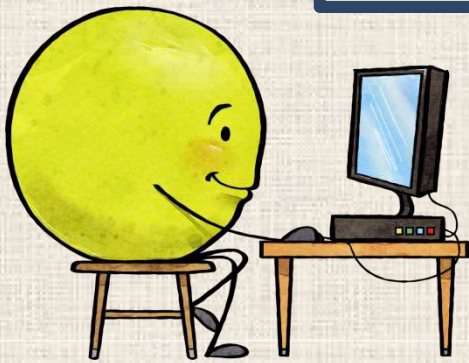
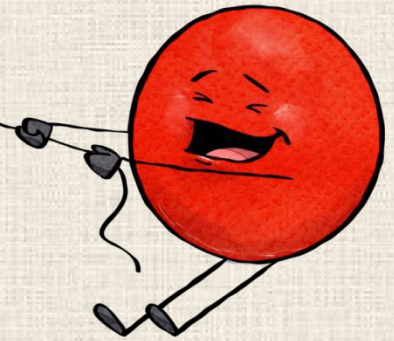
Product Don'ts

- You may not upload this product to the Internet or store it in any public retrieval service of any kind outside of using it with your own students.
- No part of the product may be altered for resell or distribution.
- If you have any questions feel free to contact me at teachwithgaymiller@gmail.com.

Credits



[Pinterest](#)

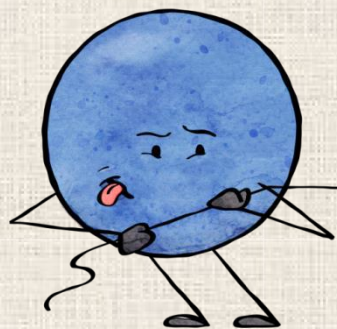


[Book Units Teacher Blog](#)

[Gay Miller's Teachers Pay Teachers Store](#)



[YouTube](#)



[Book Units Teacher Website](#)



Check out my new [YouTube](#) channel.