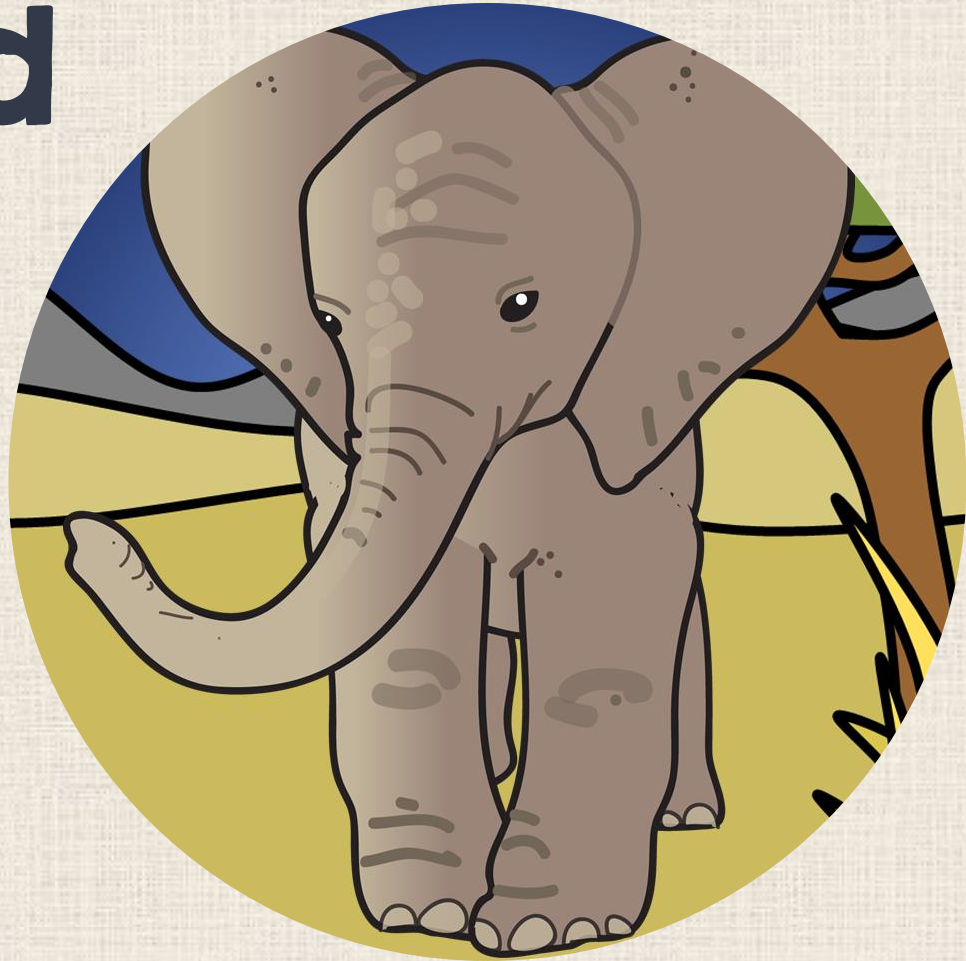


The One and Only Ruby

Preview

Try out this unit. Scroll down to see sample pages.



VOCABULARY RESOURCES

VOCABULARY BOOKMARKS

Vocabulary List

snaggleteeth (adj): having teeth that are very sharp. synonyms : razor-sharp, jagged, misgumming. antonyms : blunt, dull, smooth, even. Example: The snaggleteeth of the shark were sharp enough to cut through steel.	grapple (v): to struggle, try to get on top of, or overcome. synonyms : battle, wrestle, contend, struggle, fight, grapple with. antonyms : yield, give in, surrender. Example: She grappled with the difficult problem for hours.	grapple (v): to struggle, try to get on top of, or overcome. synonyms : battle, wrestle, contend, struggle, fight, grapple with. antonyms : yield, give in, surrender. Example: She grappled with the difficult problem for hours.	grapple (v): to struggle, try to get on top of, or overcome. synonyms : battle, wrestle, contend, struggle, fight, grapple with. antonyms : yield, give in, surrender. Example: She grappled with the difficult problem for hours.	grapple (v): to struggle, try to get on top of, or overcome. synonyms : battle, wrestle, contend, struggle, fight, grapple with. antonyms : yield, give in, surrender. Example: She grappled with the difficult problem for hours.	grapple (v): to struggle, try to get on top of, or overcome. synonyms : battle, wrestle, contend, struggle, fight, grapple with. antonyms : yield, give in, surrender. Example: She grappled with the difficult problem for hours.
--	--	--	--	--	--

WORD LIST
Students practice with two focus words for each reading selection. A wordlist with definitions, synonyms, and sample sentences from the story is included.

Vocabulary Bookmarks

The One and Only Ruby snaggleteeth to have teeth that are very sharp. synonyms : razor-sharp, jagged, misgumming. antonyms : blunt, dull, smooth, even. Example: The snaggleteeth of the shark were sharp enough to cut through steel.	The One and Only Ruby grapple to struggle, try to get on top of, or overcome. synonyms : battle, wrestle, contend, struggle, fight, grapple with. antonyms : yield, give in, surrender. Example: She grappled with the difficult problem for hours.	The One and Only Ruby grapple to struggle, try to get on top of, or overcome. synonyms : battle, wrestle, contend, struggle, fight, grapple with. antonyms : yield, give in, surrender. Example: She grappled with the difficult problem for hours.	The One and Only Ruby grapple to struggle, try to get on top of, or overcome. synonyms : battle, wrestle, contend, struggle, fight, grapple with. antonyms : yield, give in, surrender. Example: She grappled with the difficult problem for hours.
---	--	--	--

Bookmarks

The One and Only Ruby snaggleteeth to have teeth that are very sharp. synonyms : razor-sharp, jagged, misgumming. antonyms : blunt, dull, smooth, even. Example: The snaggleteeth of the shark were sharp enough to cut through steel.	The One and Only Ruby grapple to struggle, try to get on top of, or overcome. synonyms : battle, wrestle, contend, struggle, fight, grapple with. antonyms : yield, give in, surrender. Example: She grappled with the difficult problem for hours.
---	--

WORD CARDS

flummox	rambunctious	matriarch
distinctive	poacher	forage
woozy	sentinel	chryderm
		gratitude
		expanse
		domination
		fizzle

PRACTICE BOOK

Chapters 1-1 [snaggleteeth and matriarch]

1. Circle six words in the box that are synonyms for **matriarch**.

paternal	matron	juvenile
empress	minor	myriad
dame	father	young
immature	queen	grandmother

2. Fill in the word web with synonyms for **snaggleteeth**.

hooked	smooth	jagged	toothy
even	toothless	irregular	strange

snaggleteeth

Is **matriarch** used correctly in the following sentences? True or False?

- After her husband's death, the **matriarch** took charge of the family business and led it to great success.
- The **matriarch** was a large and fierce lion who protected her cubs.
- The **matriarch** was a beautiful flower that bloomed in the spring.

Page 1

TEST WITH ANSWER KEY

Vocabulary Test

Directions: Match each definition with its vocabulary word by placing the correct letter in the blank.

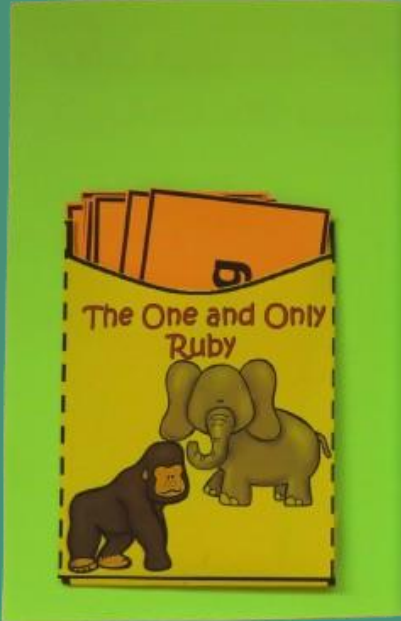
- to have teeth that are very sharp
- to struggle, try to get on top of, or overcome
- to have teeth that are very sharp
- to struggle, try to get on top of, or overcome
- to have teeth that are very sharp
- to struggle, try to get on top of, or overcome

Vocabulary Test Answer Key

1. snaggleteeth	2. grapple	3. snaggleteeth	4. grapple	5. snaggleteeth	6. grapple
------------------------	-------------------	------------------------	-------------------	------------------------	-------------------

PRINTABLE & DIGITAL VOCABULARY

Digital vocabulary practice is provided through Boom Learning Decks.



Chapters 1-9 [snaggletoothed and matriarch]

1. Circle six words in the box that are synonyms of **matriarch**.

patriarch	matron	juvenile
empress	minor	mistress
dame	father	young
immature	queen	grandmother

2. Fill in the word web with synonyms for **snaggletoothed**.

crooked	smooth	jagged	toothy	
even	toothless	uneven	teeth	straight

snaggletoothed

3. Is **matriarch** used correctly in the following sentences? True or False.

- ____ The **matriarch** of the family was known for her strong will.
- ____ After her husband's death, the **matriarch** took charge of the family business and led it to great success.
- ____ The **matriarch** was a large and fierce lion who protected her cubs.
- ____ The **matriarch** was a beautiful flower that bloomed in the spring.

Page 1

Drag the synonyms of **matriarch** to the synonym box and the antonyms of **matriarch** to the antonym box.

Synonyms

Antonyms

mistress

juvenile

patriarch

empress

matron

minor



10 COMPREHENSION CHECKS

Digital comprehension questions are provided through Boom Learning Decks.

The One and Only Ruby ~ Chapters 1-9

3. What is the primary purpose of the Tuskday ceremony for young elephants like Ruby?
a. to celebrate their birthdays
b. to mark the arrival of their tusks and signify coming of age
c. to showcase their talents to the herd
d. to choose the next matriarch of the herd

2. How does Ruby feel about her tusks, and how does this impact her behavior leading up to the Tuskday ceremony?
a. proud and excited, leading to active participation
b. indifferent, resulting in passive observation
c. annoyed and self-conscious, influencing her actions
d. enthusiastic, motivating eagerly

A. Ruby's aunts say she must ---- to ease the discomfort of growing tusks.
a. exercise vigorously to strengthen tusks
b. seek professional help for tusk-related issues
c. perform various activities to alleviate tusk pain
d. ignore the discomfort and let tusks grow naturally

4. How does Ruby dislike her influence her interactions with Akello and the other elephants in the herd?
a. improves her relationship with Akello
b. leads to positive interactions with the herd
c. causes tension and avoidance
d. results in increased herd responsibilities for Ruby

5. How does Aunt Laheli's past experience (the incident at the roadside zoo) affect her behavior and preferences?
a. makes her more cautious and reserved
b. has no impact on her present behavior
c. makes her playful and carefree
d. turns her aggressive and unfriendly

6. Compare and contrast the behavior of Aunt Laheli and Aunt Akello. How do they differ in their interactions with the herd?
a. Both are strict and disciplinarian.
b. Aunt Laheli is lenient, while Aunt Akello is stern.
c. Both are playful and carefree.
d. Aunt Laheli is distant, while Aunt Akello is nurturing.

7. What do tusks symbolize for elephants in the story? How does this symbolism impact Ruby's perception of herself?
a. Tusks symbolize strength and power, boosting Ruby's confidence.
b. Tusks symbolize fragility and vulnerability, making Ruby insecure.
c. Tusks symbolize wisdom and maturity, inspiring Ruby.
d. Tusks have no symbolic meaning for elephants in the story.

8. Based on the information provided, what do you predict will happen during Ruby's Tuskday ceremony?
a. Ruby will refuse to participate in the ceremony.
b. The ceremony will be a joyous celebration for Ruby.
c. Ruby will face unexpected challenges during the ceremony.
d. The Tuskday ceremony will be canceled or postponed.

Short Answer

1. How does Ruby feel about the upcoming Tuskday ceremony, and what challenges does she face in preparing for it? Use evidence from Chapters 1-4 to support your response.

2. List what each aunt says Ruby should do to relieve tusk discomfort. Then explain what this advice tells you about the herd.

Aunt Masika - _____

Aunt Laheli - _____

Aunt Elodie - _____

Aunt Zamoma - _____

Aunt Akello - _____

What is the primary purpose of the Tuskday ceremony for young elephants like Ruby?

to celebrate their birthdays

to mark the arrival of their tusks and signify coming of age

to showcase their talents to the herd

to choose the next matriarch of the herd

12 Constructed Response Questions

Digital writing prompts are provided through Google Slides.

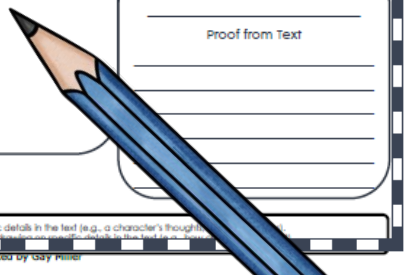
Constructed Response - Character Traits

Draw a picture of Ruby in the center box. In the surrounding boxes, list character traits of Ruby. List proof from text for each character trait listed.

<p>Trait _____</p> <p>Proof from Text _____</p> <p>_____</p> <p>_____</p> <p>_____</p>	<p>Ruby</p>	<p>Trait _____</p> <p>Proof from Text _____</p> <p>_____</p> <p>_____</p> <p>_____</p>
<p>Trait _____</p> <p>Proof from Text _____</p> <p>_____</p> <p>_____</p> <p>_____</p>		<p>Trait _____</p> <p>Proof from Text _____</p> <p>_____</p> <p>_____</p> <p>_____</p>


ELA.3 Describe in depth a character, setting, or event in a story or drama, drawing on specific details in the text (e.g., a character's thoughts, feelings, and actions). L.3.3 Compare and contrast two or more characters, settings, or events, drawing on specific details in the text to show how they are similar to and different from each other.

Page | 10 Unit Created by Gay Miller




Constructed Response – Character Traits

List character traits of Ruby. List proof from text for each character trait listed.

<p>Trait</p> <p>Type answer here.</p> <p>Proof from Text</p> <p>Type answer here.</p>	<p>Ruby</p> 	<p>Trait</p> <p>Type answer here.</p> <p>Proof from Text</p> <p>Type answer here.</p>
<p>Trait</p> <p>Type answer here.</p> <p>Proof from Text</p> <p>Type answer here.</p>		<p>Trait</p> <p>Type answer here.</p> <p>Proof from Text</p> <p>Type answer here.</p>

© Gay Miller



What are Boom Cards?

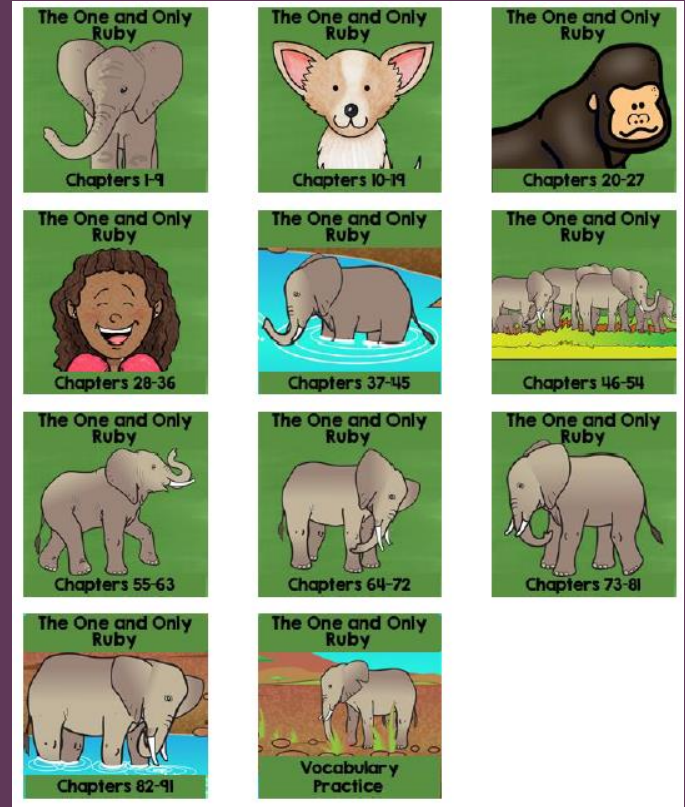
Boom Cards are digital task cards that students play on the Boom Learning Website.

They...

- ✓ are fully digital – require no printing, paper, ink, etc.
- ✓ may be used on all modern browsers
- ✓ are played on devices connected to the Internet
- ✓ can be used for student practice at no cost to you

When you purchase this novel study from TPT, you will receive special links to these Boom Cards. When you click on one of these links, you will be asked to sign into your account or create a free account at the Boom Learning Website. The special links in the paid resource let the Boom Learning site know you have purchased the deck. When you click the link, Boom Learning sends the Boom Deck to your Boom Library, so your students can access them. Students can play for free or data will be tracked for you with the Boom Learning Paid Subscription.

Click here for a [playable preview on Boom Learning](#).



Boom Learning Card Examples

Is **matriarch** used correctly in this sentence?

The **matriarch** was a beautiful flower that bloomed in the spring.

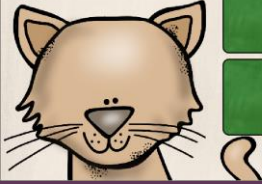


YES

NO

Is **matriarch** used correctly in this sentence?

The **matriarch** was a large and fierce lion who protected her cubs.



NO

YES

Is **matriarch** used correctly in this sentence?

The **matriarch** of the family was known for her strong will.



NO

YES

Is **matriarch** used correctly in this sentence?

After her husband's death, the **matriarch** took charge of the family business and led it to great success.



YES

NO

How does Ruby feel about her tusks, and how does this impact her behavior leading up to the Tusksday ceremony?

indifferent, resulting in passive observation

annoyed and self-conscious, influencing her actions

enthusiastic, motivating her to prepare eagerly

proud and excited, leading to active participation

Drag the synonyms of **matriarch** to the synonym box and the antonyms of **matriarch** to the antonym box.

Synonyms

Antonyms

- queen
- dame
- young

- immature
- father
- grandmother

Drag the synonyms of **snaggletoothed** to the boxes on the word web.



Ruby's aunts say she must ---- to ease the discomfort of growing tusks.

ignore the discomfort and let tusks grow naturally

exercise vigorously to strengthen tusks

seek professional help for tusk-related issues

perform various activities to alleviate tusk pain

What is the primary purpose of the Tusksday ceremony for young elephants like Ruby?

to celebrate their birthdays

to mark the arrival of their tusks and signify coming of age

to showcase their talents to the herd

to choose the next matriarch of the herd

Based on the information provided, what do you predict will happen during Ruby's Tusksday ceremony?

Ruby will refuse to participate in the ceremony.

Ruby will face unexpected challenges during the ceremony.

The Tusksday ceremony will be canceled or postponed.

The ceremony will be a joyous celebration for Ruby.

What do tusks symbolize for elephants in the story? How does this symbolism impact Ruby's perception of herself?

Tusks symbolize fragility and vulnerability, making Ruby insecure.

Tusks have no symbolic meaning for elephants in the story.

Tusks symbolize wisdom and maturity, inspiring Ruby.

Tusks symbolize strength and power, boosting Ruby's confidence.

How does Aunt Lahel's past experience (the incident at the roadside zoo) affect her behavior and preferences?

has no impact on her present behavior

makes her more cautious and reserved

makes her playful and carefree

turns her aggressive and unfriendly

How does Ruby disliking her tusks influence her interactions with Aunt Akello and the other elephants in her herd?

results in increased herd responsibilities for Ruby

leads to positive interactions with the herd

improves her relationship with Aunt Akello

causes tension and avoidance

Compare and contrast the behavior of Aunt Lahel and Aunt Akello toward Ruby. How do they differ in their approach to her?

Both are playful and carefree.

Aunt Lahel is distant, while Aunt Akello is nurturing.

Both are strict and disciplinarian.

Aunt Lahel is lenient, while Aunt Akello is stern.

Drag the synonyms of **matriarch** to the synonym box and the antonyms of **matriarch** to the antonym box.

Synonyms

Antonyms

mistress

patriarch

matron

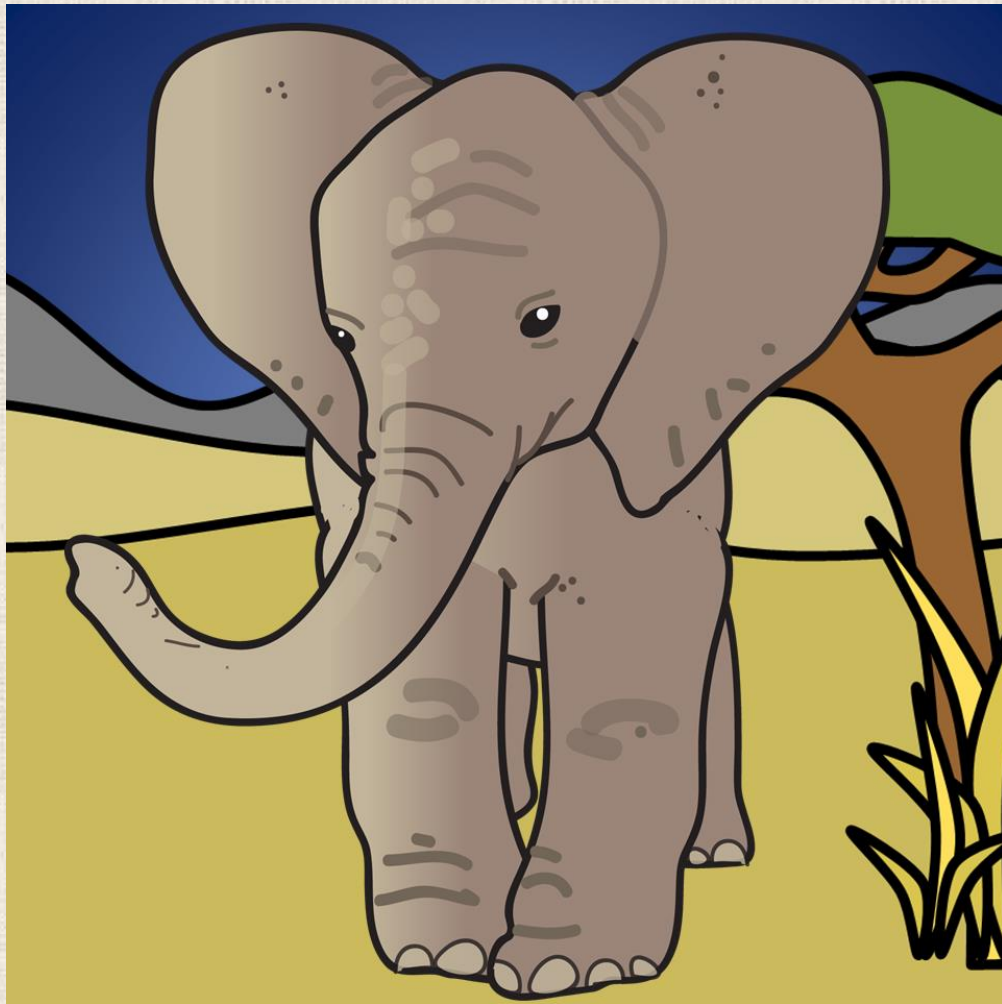
juvenile

empress

minor

The One and Only Ruby

Novel Study Samples



Created by Gay Miller





**Thank you for
downloading this novel
study sample.**

**On the next pages, you will find the following pages
from the unit including:**

- **Table of Contents for the Digital + Printable Version**
- **Lesson Plans at a Glance for the Full Unit**

FREE SAMPLE PAGES

**The First Reading Selection plus Answer Keys
(These pages are found in all versions of this unit.)**

- **Vocabulary Practice**
- **Comprehension Questions**
- **Constructed Response Writing Prompt
(with and without the Common Core
Standards)**



**Are you wondering what other novel
studies I have available? You can see
the complete list [here](#).**

Table of Contents

Lesson Plans at a Glance	5
SECTION 1 - Links to Digital Resources	6
Chapters by Numbers	14
SECTION 2 - Vocabulary	15
Teacher Information	16
Vocabulary List	19
Vocabulary Bookmarks	24
Vocabulary Word Cards	26
Vocabulary Practice Booklet	30
Vocabulary Test	49
SECTION 3 - Comprehension/Writing	51
Teacher Information	52
Comprehension Chapters 1-9	57
Character Traits - Ruby	59
Comprehension Chapters 10-19	60
Setting	62
Comprehension Chapters 20-27	63
Point of View	65
Comprehension Chapters 28-36	67
Making Connections	69
Story Sequence	70
Comprehension Chapters 37-45	71
Summarizing	73
Comprehension Chapters 46-54	74
Figurative Language	76
Comprehension Chapters 55-63	78
Problem and Solution Chain	80
Comprehension Chapters 64-72	81
Mood	83
Comprehension Chapters 73-81	84
Theme	86
Acrostic	87
Comprehension Chapters 82-91	88
Plot Development Roller Coaster	90

SECTION 4 - Answer Keys for Comprehension and Writing	91
SECTION 5 - Student Packet without Standards	127
SECTION 6 - Language Arts Skills	162
Teacher Information	163
Lesson 1 – Character Traits	168
Organizers	170
Character Trait Activity	173
Elephant Expedition: A Character Trait Matching Game	179
Lesson 2 – Setting Details	184
Organizer	185
Setting Descriptions Game	188
Suggested Setting Projects	191
Lesson 3 – Suffix -ness	193
Organizer	195
Practice Suffix –ness	197
Blackout Game Suffix -ness	199
Lesson 4 Root Word RUPT	203
Organizer	206
Practice Root Word rupt	208
Aggravation Game Root Word rupt	210
Lesson 5 Problems and Solutions	213
Organizer	215
Problem and Solution Practice	218
Lesson 6 Mood	222
Organizer	223
Mood Quest Trail Game	226
Lesson 7 – Theme	237
Organizer	238
Main Idea and Theme Statements Practice	241
Lesson 8 – Plot Development	243
Organizer	245
Organizer	248
Practice using Animated Shorts	250
Credits	254

Lesson Plans at a Glance

Read and Comprehension Quiz	Vocabulary List & Booklet		Constructed Response Question	Skill Practice
Chapters 1-9	snaggletoothed matriarch	Page 1	Character Traits	Lesson 1 Character Traits
Chapters 10-19	creed pachyderm	Page 2	Setting	Lesson 2 Setting Details
Chapters 20-27	pavilion abomination	Page 3	Point of View	Lesson 3 Suffix -ness
Chapters 28-36	flummox rambunctious	Page 4	Making Connections Story Sequence	
Chapters 37-45	distinctive poacher	Page 5-6	Summarizing	Lesson 4 Root Word rupt
Chapters 46-54	woozy sentinel	Page 7	Figurative Language	
Chapters 55-63	enclosure forage	Page 8	Problem and Solution Chain	Lesson 5 Problems and Solutions
Chapters 64-72	obstacle expanse	Page 9	Mood	Lesson 6 Mood
Chapters 73-81	sullen fizzle	Page 10	Theme Acrostic	Lesson 7 Theme
Chapters 82-91	lodestar gratitude	Pages 11-12	Plot Development	Lesson 8 Plot Development
Vocabulary Test				

Review

Use the vocabulary words you just created to complete these sentences.

1. Her _____ smile made her stand out from the crowd.
2. The _____ was a large and fierce lion who protected his pride.
3. He was so _____ after the roller coaster ride that he had to sit down for a while.
4. The sailor used the _____ to navigate his ship across the ocean.
5. The animals were kept in a small _____ at the farm.
6. The corrupt politician's embezzlement of public funds was an _____, betraying the trust of the citizens.
7. The _____ was a person who illegally hunted or captured wild animals.
8. The _____ was a large and comfortable place with a pool, a mud wallow, a waterfall, and a lot of space for the elephants to roam and play.
9. The math problem _____ her, and she could not figure out the solution.
10. He was very _____ and always running around and making noise.
11. She was _____ after the argument and did not want to talk to anyone.
12. The _____ was a set of beliefs or principles that guided someone's actions.
13. The squirrels _____ for nuts and seeds in the forest.
14. The elephant herd followed the wise _____ because she was the group's oldest and most experienced female.

Chapters 1-9 [snaggletoothed and matriarch]

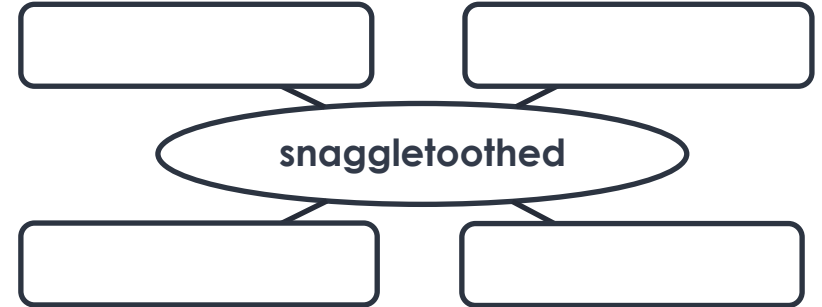
1. Circle six words in the box that are synonyms of **matriarch**.

patriarch	matron	juvenile
empress	minor	mistress
dame	father	young
immature	queen	grandmother



2. Fill in the word web with synonyms for **snaggletoothed**.

crooked	smooth	jagged	toothy
even	toothless	uneven teeth	straight



Is **matriarch** used correctly in the following sentences?

True or False

3. ____ The **matriarch** of the family was known for her strong will.
4. ____ After her husband's death, the **matriarch** took charge of the family business and led it to great success.
5. ____ The **matriarch** was a large and fierce lion who protected her cubs.
6. ____ The **matriarch** was a beautiful flower that bloomed in the spring.

Review

Use the vocabulary words you just created to complete these sentences.

1. Her **distinctive** smile made her stand out from the crowd.
2. The **sentinel** was a large and fierce lion who protected his pride.
3. He was so **woozy** after the roller coaster ride that he had to sit down for a while.
4. The sailor used the **lodestar** to navigate his ship across the ocean.
5. The animals were kept in a small **enclosure** at the farm.
6. The corrupt politician's embezzlement of public funds was an **abomination**, betraying the trust of the citizens.
7. The **poacher** was a person who illegally hunted or captured wild animals.
8. The **pavilion** was a large and comfortable place with a pool, a mud wallow, a waterfall, and a lot of space for the elephants to roam and play.
9. The math problem **flummoxed** her, and she could not figure out the solution.
10. He was very **rambunctious** and always running around and making noise.
11. She was **sullen** after the argument and did not want to talk to anyone.
12. The **creed** was a set of beliefs or principles that guided someone's actions.
13. The squirrels **foraged** for nuts and seeds in the forest.
14. The elephant herd followed the wise **matriarch** because she was the group's oldest and most experienced female.

Chapters 1-9 [snaggletoothed and matriarch]

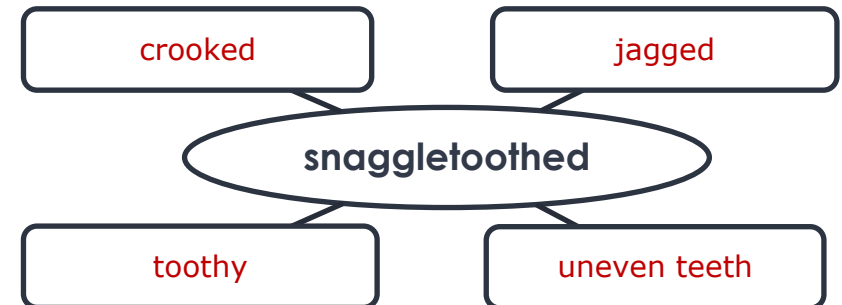
1. Circle six words in the box that are synonyms of **matriarch**.

patriarch	matron	juvenile
empress	minor	mistress
dame	father	young
immature	queen	grandmother



2. Fill in the word web with synonyms for **snaggletoothed**.

crooked	smooth	jagged	toothy
even	toothless	uneven teeth	straight



Is **matriarch** used correctly in the following sentences?

True or False

3. I The **matriarch** of the family was known for her strong will.
4. I After her husband's death, the **matriarch** took charge of the family business and led it to great success.
5. F The **matriarch** was a large and fierce lion who protected her cubs.
6. F The **matriarch** was a beautiful flower that bloomed in the spring.

The One and Only Ruby ~ Chapters 1-9

<p>1. What is the primary purpose of the Tusksday ceremony for young elephants like Ruby?</p> <ol style="list-style-type: none">to celebrate their birthdaysto mark the arrival of their tusks and signify coming of ageto showcase their talents to the herdto choose the next matriarch of the herd	<p>2. How does Ruby feel about her tusks, and how does this impact her behavior leading up to the Tusksday ceremony?</p> <ol style="list-style-type: none">proud and excited, leading to active participationindifferent, resulting in passive observationannoyed and self-conscious, influencing her actionsenthusiastic, motivating her to prepare eagerly
<p>3. Ruby's aunts say she must ---- to ease the discomfort of growing tusks.</p> <ol style="list-style-type: none">exercise vigorously to strengthen tusksseek professional help for tusk-related issuesperform various activities to alleviate tusk painignore the discomfort and let tusks grow naturally	<p>4. How does Ruby disliking her tusks influence her interactions with Aunt Akello and the other elephants in her herd?</p> <ol style="list-style-type: none">improves her relationship with Aunt Akelloleads to positive interactions with the herdcauses tension and avoidanceresults in increased herd responsibilities for Ruby
<p>5. How does Aunt Laheli's past experience (the incident at the roadside zoo) affect her behavior and preferences?</p> <ol style="list-style-type: none">makes her more cautious and reservedhas no impact on her present behaviormakes her playful and carefreeturns her aggressive and unfriendly	<p>6. Compare and contrast the behavior of Aunt Laheli and Aunt Akello toward Ruby. How do they differ in their approach to her?</p> <ol style="list-style-type: none">Both are strict and disciplinarian.Aunt Laheli is lenient, while Aunt Akello is stern.Both are playful and carefree.Aunt Laheli is distant, while Aunt Akello is nurturing.

<p>7. What do tusks symbolize for elephants in the story? How does this symbolism impact Ruby's perception of herself?</p> <ol style="list-style-type: none"> Tusks symbolize strength and power, boosting Ruby's confidence. Tusks symbolize fragility and vulnerability, making Ruby insecure. Tusks symbolize wisdom and maturity, inspiring Ruby. Tusks have no symbolic meaning for elephants in the story. 	<p>8. Based on the information provided, what do you predict will happen during Ruby's Tusksday ceremony?</p> <ol style="list-style-type: none"> Ruby will refuse to participate in the ceremony. The ceremony will be a joyous celebration for Ruby. Ruby will face unexpected challenges during the ceremony. The Tusksday ceremony will be canceled or postponed.
--	--

Short Answer

1. **How does Ruby feel about the upcoming Tusksday ceremony, and what challenges does she face in preparing for it? Use evidence from Chapters 1-4 to support your response.**

2. **List what each aunt says Ruby should do to relieve tusk discomfort. Then explain what this advice tells the reader about the herd.**

Aunt Masika - _____

Aunt Laheli - _____

Aunt Elodie - _____

Aunt Zamoma - _____

Aunt Akello - _____

Constructed Response - Character Traits

Draw a picture of Ruby in the center box. In the surrounding boxes, list character traits of Ruby. List proof from text for each character trait listed.

<p>Trait _____</p> <p>_____</p> <p>Proof from Text</p> <p>_____</p> <p>_____</p> <p>_____</p> <p>_____</p> <p>_____</p>	<p>Ruby</p>	<p>Trait _____</p> <p>_____</p> <p>Proof from Text</p> <p>_____</p> <p>_____</p> <p>_____</p> <p>_____</p> <p>_____</p>
<p>Trait _____</p> <p>_____</p> <p>Proof from Text</p> <p>_____</p> <p>_____</p> <p>_____</p> <p>_____</p> <p>_____</p>		<p>Trait _____</p> <p>_____</p> <p>Proof from Text</p> <p>_____</p> <p>_____</p> <p>_____</p> <p>_____</p> <p>_____</p>

RL.4.3 Describe in depth a character, setting, or event in a story or drama, drawing on specific details in the text (e.g., a character's thoughts, words, or actions).
RL.5.3 Compare and contrast two or more characters, settings, or events in a story or drama, drawing on specific details in the text (e.g., how characters interact).

The One and Only Ruby ~ Chapters 1-9

<p>1. What is the primary purpose of the Tusksday ceremony for young elephants like Ruby?</p> <ul style="list-style-type: none">a. to celebrate their birthdaysb. to mark the arrival of their tusks and signify coming of agec. to showcase their talents to the herdd. to choose the next matriarch of the herd	<p>2. How does Ruby feel about her tusks, and how does this impact her behavior leading up to the Tusksday ceremony?</p> <ul style="list-style-type: none">a. proud and excited, leading to active participationb. indifferent, resulting in passive observationc. annoyed and self-conscious, influencing her actionsd. enthusiastic, motivating her to prepare eagerly
<p>3. Ruby's aunts say she must ---- to ease the discomfort of growing tusks.</p> <ul style="list-style-type: none">a. exercise vigorously to strengthen tusksb. seek professional help for tusk-related issuesc. perform various activities to alleviate tusk paind. ignore the discomfort and let tusks grow naturally	<p>4. How does Ruby disliking her tusks influence her interactions with Aunt Akello and the other elephants in her herd?</p> <ul style="list-style-type: none">a. improves her relationship with Aunt Akellob. leads to positive interactions with the herdc. causes tension and avoidanced. results in increased herd responsibilities for Ruby
<p>5. How does Aunt Laheli's past experience (the incident at the roadside zoo) affect her behavior and preferences?</p> <ul style="list-style-type: none">a. makes her more cautious and reservedb. has no impact on her present behaviorc. makes her playful and carefreed. turns her aggressive and unfriendly	<p>6. Compare and contrast the behavior of Aunt Laheli and Aunt Akello toward Ruby. How do they differ in their approach to her?</p> <ul style="list-style-type: none">a. Both are strict and disciplinarian.b. Aunt Laheli is lenient, while Aunt Akello is stern.c. Both are playful and carefree.d. Aunt Laheli is distant, while Aunt Akello is nurturing.

7. What do tusks symbolize for elephants in the story? How does this symbolism impact Ruby's perception of herself?

- a. Tusks symbolize strength and power, boosting Ruby's confidence.
- b. Tusks symbolize fragility and vulnerability, making Ruby insecure.
- c. Tusks symbolize wisdom and maturity, inspiring Ruby.
- d. Tusks have no symbolic meaning for elephants in the story.

8. Based on the information provided, what do you predict will happen during Ruby's Tuskday ceremony?

- a. Ruby will refuse to participate in the ceremony.
- b. The ceremony will be a joyous celebration for Ruby.
- c. Ruby will face unexpected challenges during the ceremony.
- d. The Tuskday ceremony will be canceled or postponed.

Short Answer

1. **How does Ruby feel about the upcoming Tuskday ceremony, and what challenges does she face in preparing for it? Use evidence from Chapters 1-4 to support your response.**

Sample Answer:

Ruby is nervous about the Tuskday ceremony and dreads the responsibilities of growing tusks. In Chapters 1-4, Ruby lists the problems with being the "littlest elephant" such as being ignored, avoiding dangerous situations at the watering hole, and disliking the nickname "Tusky." These challenges highlight Ruby's anxiety and reluctance to accept the changes that come with growing up.

2. **List what each aunt says Ruby should do to relieve tusk discomfort. Then explain what this advice tells the reader about the herd.**

Sample Answer:

Aunt Masika - Rub the sore spots on mossy log and count to 53.

Aunt Laheli - Put your head under ice-cold water and blow bubbles.

Aunt Elodie - Eat a sour apple with at least 2 worms in it.

Aunt Zamoma - Take a nap in the sun but don't snore.

Aunt Akello - Don't think about it.

From rubbing sore spots to eating sour apples, each aunt contributes unique advice, highlighting the supportive nature of the herd. This diversity reflects the close-knit and caring relationships among the elephants, emphasizing their shared experiences and willingness to help one another.

Constructed Response - Character Traits

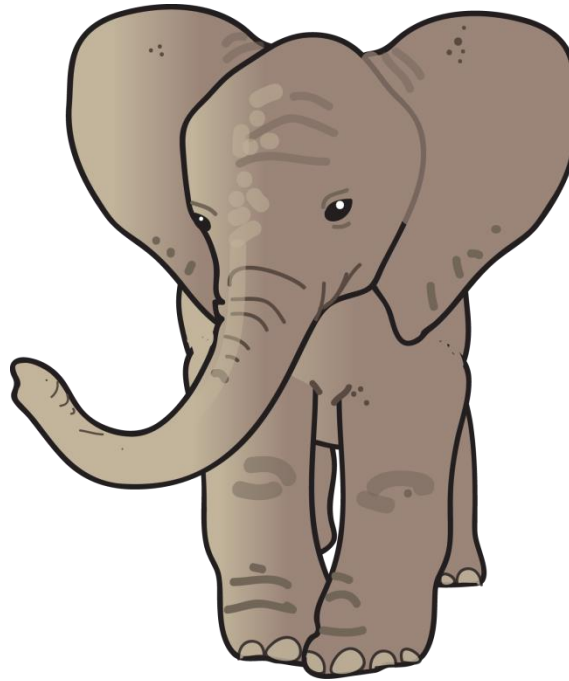
Draw a picture of Ruby in the center box. In the surrounding boxes, list character traits of Ruby. List proof from text for each character trait listed.

Trait **unique personality**

Proof from Text

In Chapter 5, Ruby details the importance of tusks for elephants, highlighting their use in eating, digging, and fighting. Unlike the traditional elephant perspective that celebrates tusks, Ruby dislikes her tusks. This perspective provides insight into Ruby's unique character and challenges the conventional view of tusks as a symbol of pride for elephants.

Ruby



Trait **carefree and playful**

Proof from Text

In Chapter 6, Ruby's preference for playing in the mud showcases her resistance to the formalities associated with Tuskday, emphasizing her desire for a carefree and playful existence. This behavior reflects Ruby's internal conflict and reluctance to conform to societal expectations.

Trait **displays empathy**

Proof from Text

In Chapter 8, Ruby willingly accepts Aunt Laheli's unconventional behavior, such as playing "oops-oopsie," demonstrating her compassion and understanding. This highlights Ruby's empathy and ability to connect with individuals who may be different or have experienced hardship.

Trait **doesn't want to grow up**

Proof from Text

Ruby avoids all things that involve her tusks which are a symbol of growing up. In Chapter 6, Ruby doesn't want to practice for Tuskday. In Chapter 7, Ruby hides from the park veterinarian T.J. who wants to check out her new tusks.

RL.4.3 Describe in depth a character, setting, or event in a story or drama, drawing on specific details in the text (e.g., a character's thoughts, words, or actions).

RL.5.3 Compare and contrast two or more characters, settings, or events in a story or drama, drawing on specific details in the text (e.g., how characters interact).

Addendum

Constructed Response Questions without Common Core State Standards



Important Update

Originally 46 states adopted the Common Core State Standards. Many teachers have commented that they love having the standards on pages with constructed response writing prompts for accountability reasons. Now educational trends are changing. Many states have repealed Common Core and adopted their own state standards. To meet the needs of teachers both using and not using Common Core Standards, I have opted to provide the writing questions both with and without standards.

To make creating a printable student packet easier, the comprehension and constructed response questions are both included in this section.

The One and Only Ruby ~ Chapters 1-9

<p>1. What is the primary purpose of the Tusksday ceremony for young elephants like Ruby?</p> <ol style="list-style-type: none">to celebrate their birthdaysto mark the arrival of their tusks and signify coming of ageto showcase their talents to the herdto choose the next matriarch of the herd	<p>2. How does Ruby feel about her tusks, and how does this impact her behavior leading up to the Tusksday ceremony?</p> <ol style="list-style-type: none">proud and excited, leading to active participationindifferent, resulting in passive observationannoyed and self-conscious, influencing her actionsenthusiastic, motivating her to prepare eagerly
<p>3. Ruby's aunts say she must ---- to ease the discomfort of growing tusks.</p> <ol style="list-style-type: none">exercise vigorously to strengthen tusksseek professional help for tusk-related issuesperform various activities to alleviate tusk painignore the discomfort and let tusks grow naturally	<p>4. How does Ruby disliking her tusks influence her interactions with Aunt Akello and the other elephants in her herd?</p> <ol style="list-style-type: none">improves her relationship with Aunt Akelloleads to positive interactions with the herdcauses tension and avoidanceresults in increased herd responsibilities for Ruby
<p>5. How does Aunt Laheli's past experience (the incident at the roadside zoo) affect her behavior and preferences?</p> <ol style="list-style-type: none">makes her more cautious and reservedhas no impact on her present behaviormakes her playful and carefreeturns her aggressive and unfriendly	<p>6. Compare and contrast the behavior of Aunt Laheli and Aunt Akello toward Ruby. How do they differ in their approach to her?</p> <ol style="list-style-type: none">Both are strict and disciplinarian.Aunt Laheli is lenient, while Aunt Akello is stern.Both are playful and carefree.Aunt Laheli is distant, while Aunt Akello is nurturing.

7. What do tusks symbolize for elephants in the story? How does this symbolism impact Ruby's perception of herself?
- a. Tusks symbolize strength and power, boosting Ruby's confidence.
 - b. Tusks symbolize fragility and vulnerability, making Ruby insecure.
 - c. Tusks symbolize wisdom and maturity, inspiring Ruby.
 - d. Tusks have no symbolic meaning for elephants in the story.

8. Based on the information provided, what do you predict will happen during Ruby's Tuskday ceremony?
- a. Ruby will refuse to participate in the ceremony.
 - b. The ceremony will be a joyous celebration for Ruby.
 - c. Ruby will face unexpected challenges during the ceremony.
 - d. The Tuskday ceremony will be canceled or postponed.

Short Answer

1. **How does Ruby feel about the upcoming Tuskday ceremony, and what challenges does she face in preparing for it? Use evidence from Chapters 1-4 to support your response.**

2. **List what each aunt says Ruby should do to relieve tusk discomfort. Then explain what this advice tells the reader about the herd.**

Aunt Masika - _____

Aunt Laheli - _____

Aunt Elodie - _____

Aunt Zamoma - _____

Aunt Akello - _____

Constructed Response - Character Traits

Draw a picture of Ruby in the center box. In the surrounding boxes, list character traits of Ruby. List proof from text for each character trait listed.

Trait _____

Proof from Text

Ruby

Trait _____

Proof from Text

Trait _____

Proof from Text

Trait _____

Proof from Text

Click here to get the
digital + printable unit.

The One and Only Ruby
Digital + Printable Book Unit

Includes
Google Slides

hosted at
boom!
www.boomlearning.com

Created by Gay Miller



Terms of Use

- All rights reserved by Gay Miller.
- This purchase includes a limited license for single classroom use only. You may utilize it for each student you serve.

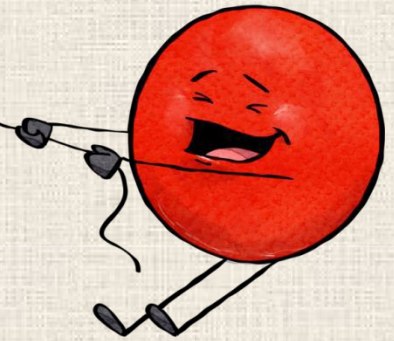
Product Don'ts

- You may not upload this product to the Internet or store it in any public retrieval service of any kind outside of using it with your own students.
- No part of the product may be altered for resell or distribution.
- If you have any questions feel free to contact me at teachwithgaymiller@gmail.com.

Credits



[Pinterest](#)

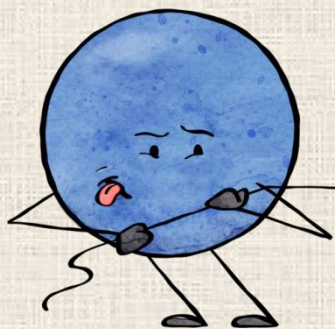


[Book Units Teacher Blog](#)

[Gay Miller's
Teachers Pay Teachers Store](#)



[YouTube](#)



[Book Units Teacher Website](#)



Check out my new [YouTube](#) channel.