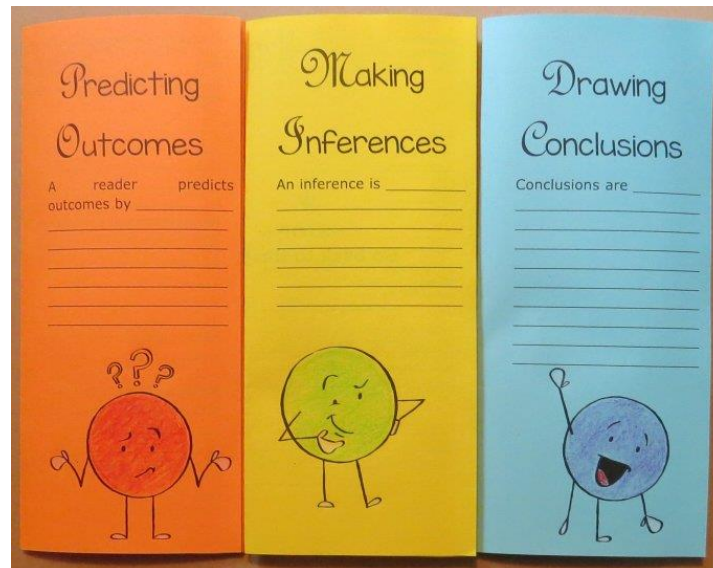
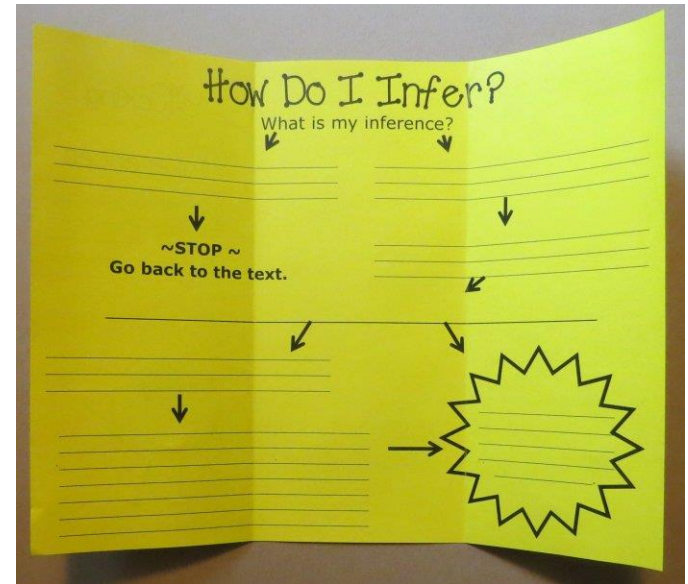
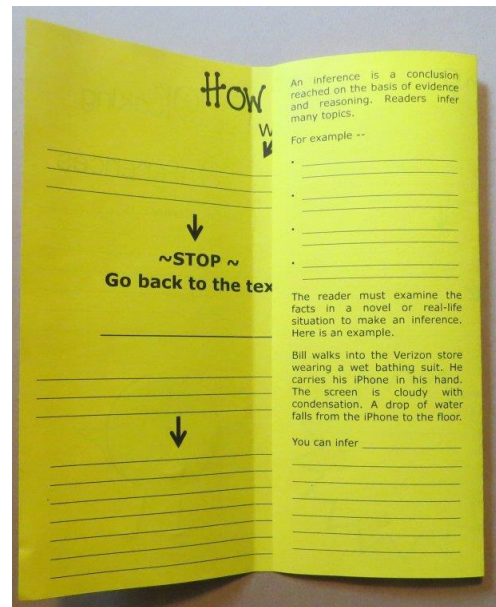
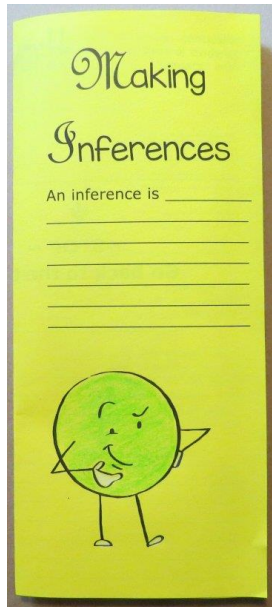


Making Inferences

This is a tri-fold brochure organizer. Print the organizer back-to-front. No cutting is necessary. Fold the organizer in thirds.



Collect all three.

An inference is a conclusion reached on the basis of evidence and reasoning. Readers infer many topics.

For example --

- _____

- _____

- _____

- _____

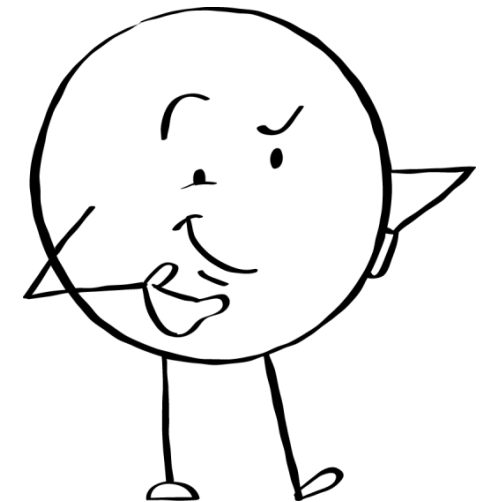
The reader must examine the facts in a novel or real-life situation to make an inference. Here is an example.

Bill walks into the Verizon store wearing a wet bathing suit. He carries his iPhone in his hand. The screen is cloudy with condensation. A drop of water falls from the iPhone to the floor.

You can infer _____

Making Inferences

An inference is _____



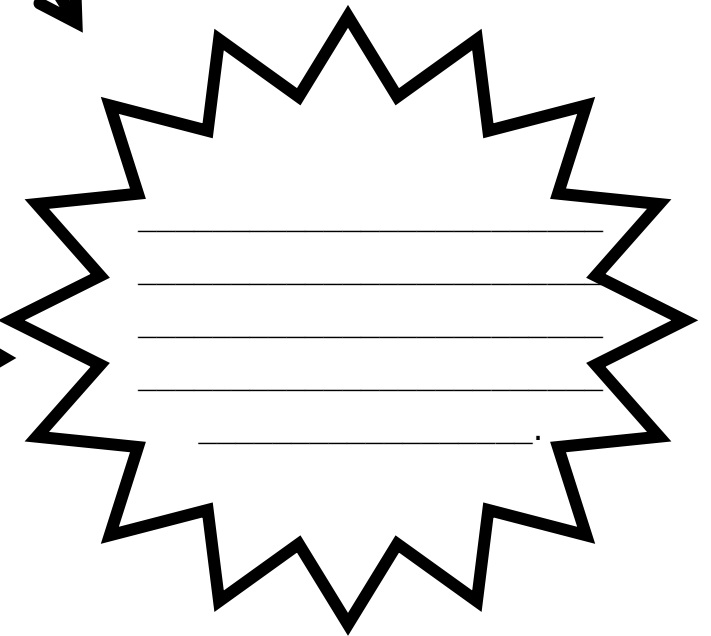
How Do I Infer?

What is my inference?



~STOP~

Go back to the text.



An inference is a conclusion reached on the basis of evidence and reasoning. Readers infer many topics.

For example --

- reasons for a character's actions
- the author's message
- causes and effects
- problems and solutions

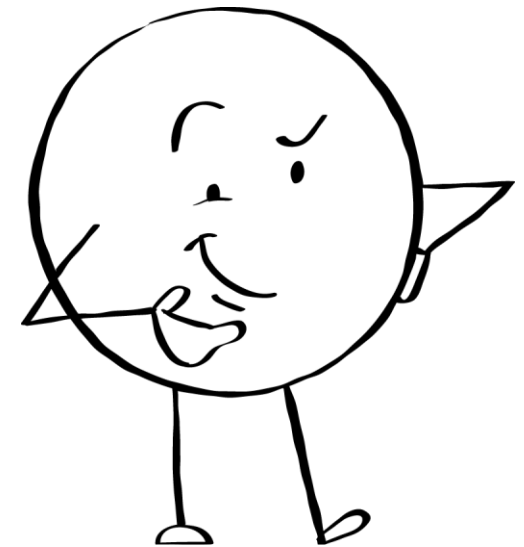
The reader must examine the facts in a novel or real-life situation to make an inference. Here is an example.

Bill walks into the Verizon store wearing a wet bathing suit. He carries his iPhone in his hand. The screen is cloudy with condensation. A drop of water falls from the iPhone to the floor.

You can infer that Bill most likely damaged his iPhone by dropping it in water while swimming. He is in the store to get it repaired. These are facts drawn from the information provided.

Making Inferences

An inference is a conclusion reached on the basis of evidence and reasoning. Readers infer many topics.



How Do I Infer?

What is my inference?

Is my inference based on a guess?

Is my inference based on available information?

~STOP~

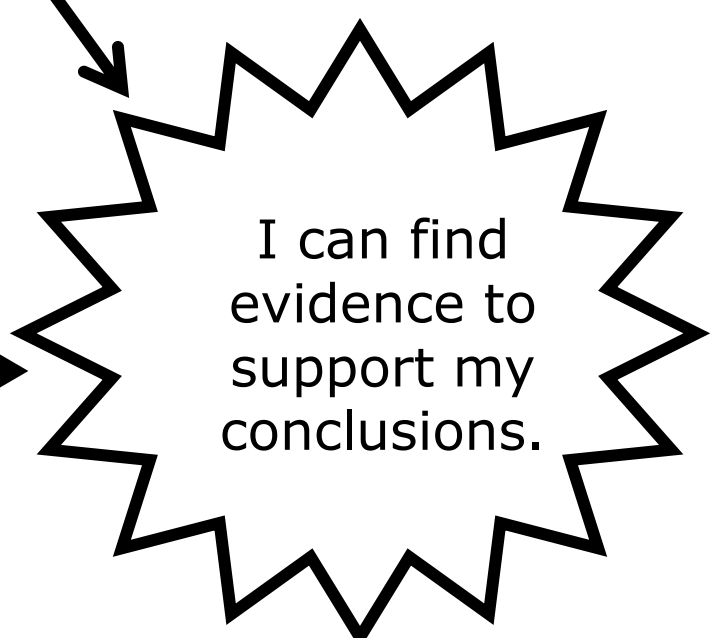
Go back to the text.

What information did I use to make this inference?

How good was my thinking?

My conclusions cannot be supported with facts.

Do I need to change my thinking? Do I need to consider additional facts before coming to a conclusion?



I can find evidence to support my conclusions.

Visit me on

[http://www.pinterest.com/
lindagaymiller/](http://www.pinterest.com/lindagaymiller/)

Teachers Pay Teachers

[http://www.teacherspayteachers.com/
Store/Gay-Miller](http://www.teacherspayteachers.com/Store/Gay-Miller)

Visit my website at

<http://bookunitsteacher.com/>

